

job name:
 type:

mere™ ceiling spec sheet 90CRI

driver housing / power head

4" dia. extruded aluminum with silver anodized or black anodized finish, acts as heat sink as well. also available in painted finishes listed below.

diffuser

6" dia. .100" Satinice white, optimum light diffusion, acrylic cylinder.

optics

340° omnidirectional silicone optic.

bottom lens (optional)

P95 frosted acrylic bottom lens solvent welded to bottom of cylindrical diffuser.

LED module

COB array in 2700K, 3000K, 3500K, or 4000K. (call factory for 5000K) 90+ cri standard. under normal operating conditions, the LEDs employed are rated for >50,000hrs L70 (6.8K) per IES TM-21 from LM-80 test data.

driver

integral, programmable, UL class P, class 2, universal input (120-277v), constant current, 0-10v dimming, 1% minimum dimming level, PF >.9, THD <20%, protections include open and short circuit, overload and over temperature.

mounting

mounts to standard j-box (by other).

emergency

recommend use of inverter (by other).
 optional WREM: wired for remote EM battery (by other).



catalog number

--	--	--	--	--

size

C2519
6" dia X 19"ht

C2528
6" dia X 28"ht

CCT

27 2700K

30 3000K

35 3500K

40 4000K

lumens

FX 1535 lm

LO 2165 lm

HI 2980 lm

HX 3790 lm

CL* xxxx lm
*custom lumens
consult factory

anodized finishes

AN silver anodized
ANB anodized black

painted finish

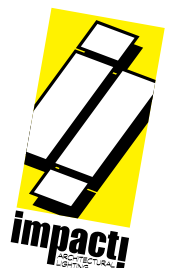
BS brass
BU blue
BZ bronze
CP champagne
GM gun metal
MB military blue
MW matte white
OR orange
RD red
SS satin silver
TG textured gray
YO yellow

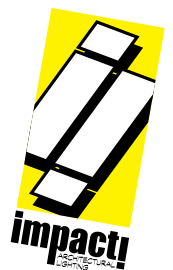
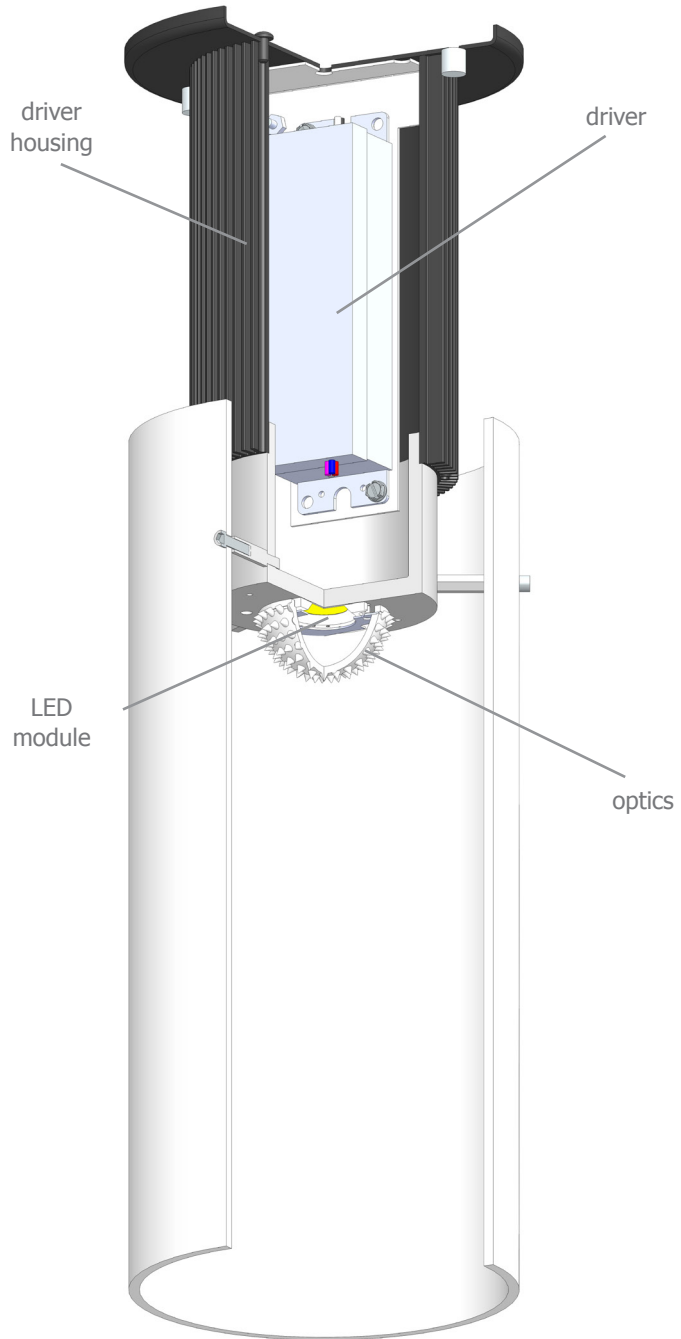
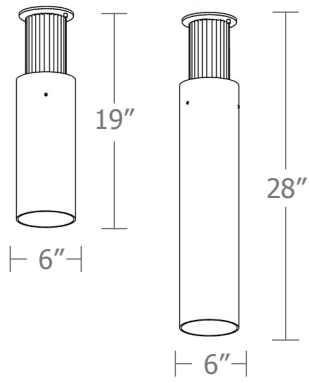
premium finish

RAL specify RAL#

options

BL frosted acrylic bottom lens, solvent welded.
WREM wired for remote EM battery pack (by other)
ELD EldoLED*
LUT Lutron*
 *consult factory





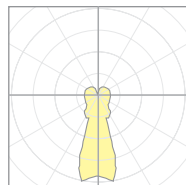
Calculation Table

The application of a Light Loss Factor is required to:

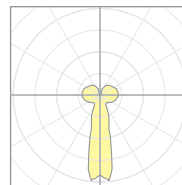
- match the lumen output for the power module specified
- incorporate the increased lumen output due to LED/Driver upgrades

Cat No	Delivered Lumens*	Watts 120V / 277V	IES File #	LLF to be applied
C2519 FX	1535	14	17553	.82
C2519 LO	2165	20	17553	1.15
C2519 HI	2980	29	17553	1.59
C2519 HX	3790	38	17553	2.02
C2528 FX	1535	14	17558	.51
C2528 LO	2165	20	17558	.71
C2528 HI	2980	29	17558	.98
C2528 HX	3790	38	17558	1.25

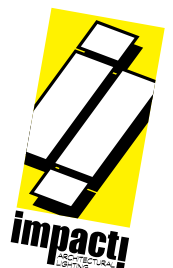
*delivered lumens based on 4000K, 90+ cri
optional bottom lens multiplier .90




17553
P2519-40LO



17558
P2528-40HI

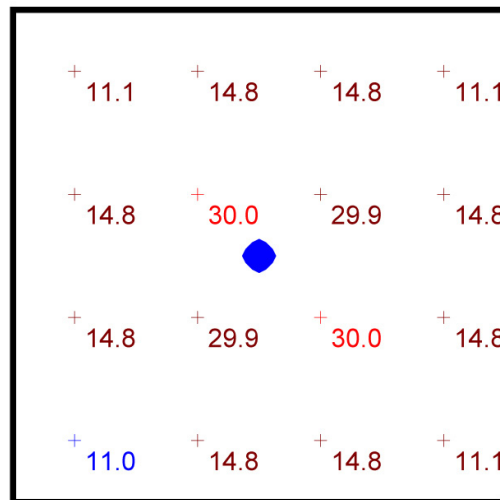


Typical Lighting Layout

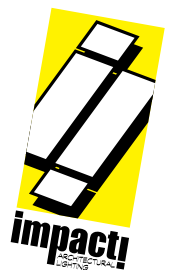
Schedule						
Symbol	QTY	Manufacturer	Catalog Number	Description	Lamp	Wattage
	1	Impact Architectural Lighting	C2519 40 HI	6" dia. x 19"h ceiling mount mere luminaire	4000k 90cri LED	29

- 8' x 8' x 10'H space
- 80/50/20 reflectances
- bottom of fixture at 8' aff
- FC readings at 2.5' aff
- layout conducted using C2519 with HI lumen 90 CRI package providing 2980 delivered lumens

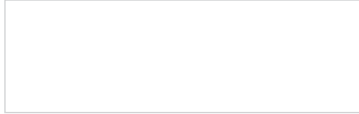
Statistics						
Description	Symbol	Avg	Max	Min	Max/Min	Avg/Min
mere.ceiling	+	17.7 fc	30.0 fc	11.0 fc	2.7:1	1.6:1



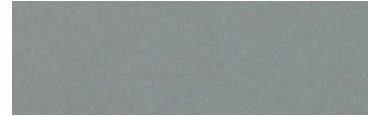
Plan View
Scale - 1" = 2ft



Powder Coat Paint Finishes



MW matte white



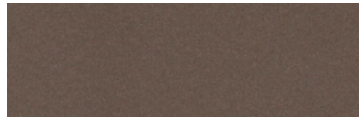
SS satin silver



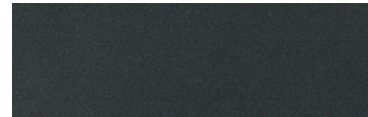
TG textured gray



CP champagne



BZ bronze



GM gun metal



OR orange 2011



BU blue 5017



BS brass



RD red 3020



YO yellow 1018



MB military blue

For accurate color verification, actual finish samples are available upon request.

Premium Finishes*



RAL#

*Available on select series. Consult product submittal for availability.

