

job name:
 type:

glo.stk™ spec sheet

material

end caps

precision CNC spun .063" aluminum. select from a variety of finishes listed below.

LED

body illumination

Heilux LumaFilm® flexible planar LED lighting sheet in 3000K, 3500K, or 4000K (85CRI), utilizing emitters rated at >77,000hrs L70 per TM21-11 from LM80 data. (90 CRI, please contact factory). white power cord standard.

downlight

Bridgelux Vero series in 3000K, 3500K, or 4000K (80CRI) optional 90cri (see below), with rated life of >50,000hrs L70 per IES TM21. (90 CRI, please contact factory).

driver

in canopy, class 2, universal input (120-277v), constant current, 0-10v dimming, 1% minimum dimming level, PF > .9, THD <20%, protections include open and short circuit, overload and over temperature.

diffuser

8" dia. .100" virgin white acrylic cylinder.

mounting

10"dia. spun steel canopy in matte white. three vertical stainless steel cables and field adjustable grippers that allow for exact AFF mounting heights.

emergency

if required, recommend use of inverter (by other).



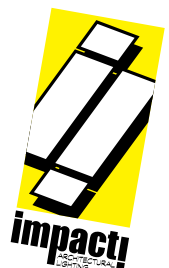
catalog number

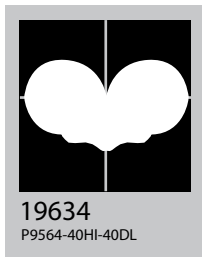
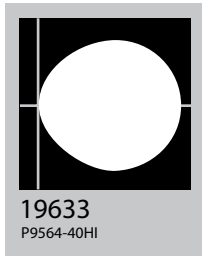
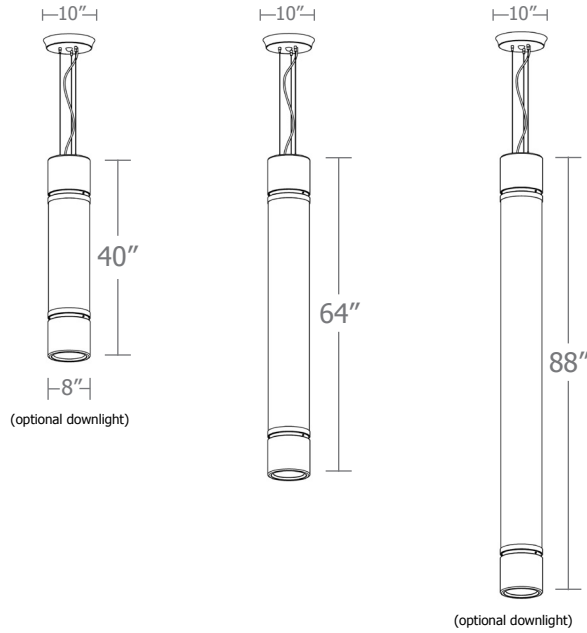
--	--	--	--	--	--

size	body illumination	downlight	finish	power cord	options
P9540 8"dia X 40"ht	30LO 3000K	NDL no downlight	AP anodized paint	WHPC white power cord and canopy	6FT 72" cables
	30HI 3000K	30DL 3000K	BN brown	SBPC silver braid power cord and canopy	12FT 12ft adj. suspension
P9564 8"dia X 64"ht	35LO 3500K	35DL 3500K	BR brick red		90CRI
	35HI 3500K	40DL 4000K	BS brass	DCDM dual circuit dimming body/downlight	
P9588 8"dia X 88"ht	40LO 4000K		BU blue		
	40HI 4000K		BZ bronze		
	(see page 2 for delivered lumens)		CP champagne		
			FB flat black		
			GM gun metal		
			GR green		
			MB military blue		
			MN mint		
			MW matte white		
			OR orange		
			PL purple		
			RD red		
			SB satin black		
			SS satin silver		
			TG textured gray		
			TW textured white		
			YO yellow		

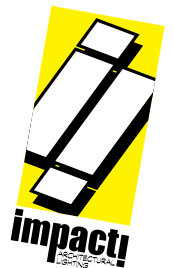
premium finish

- BA** brushed aluminum
- RAL** specify RAL#

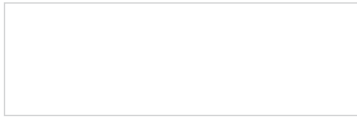




Cat No	Delivered Lumens	Watts		Amps	
		120V	277V	120V	277V
P9540 LO		15	15	0.12	0.05
4000K	1368				
3500K	1286				
3000K	1177				
P9540 HI		19	19	0.16	0.07
4000K	1774				
3500K	1667				
3000K	1525				
P9564 LO		29	29	0.24	0.10
4000K	2838				
3500K	2668				
3000K	2441				
P9564 HI		51	51	0.43	0.19
4000K	5068	ies file # 19633 & 19634			
3500K	4764				
3000K	4358				
P9588 LO		43	43	0.36	0.15
4000K	4257				
3500K	4002				
3000K	3661				
P9588 HI		68	68	0.57	0.25
4000K	6791				
3500K	6384				
3000K	5840				



Powder Coat Paint Finishes



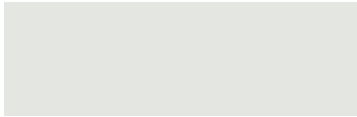
MW matte white



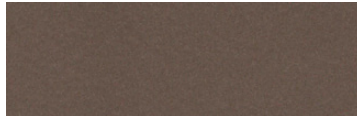
CP champagne



YO yellow 1018



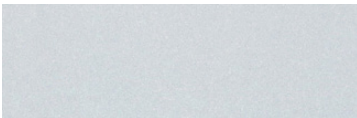
TW textured white



BZ bronze



RD red 3020



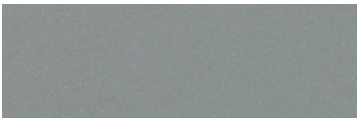
AP anodized paint



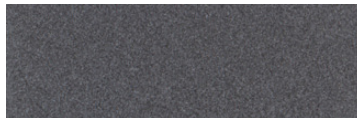
BS brass



BU blue 5017



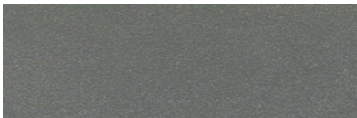
SS satin silver



GM gun metal



OR orange 2011



TG textured gray



BR brick red



MN mint 6019



FB flat black



BN brown 8023



GR green 6018



SB satin black



MB military blue



PL purple 4005

For accurate color verification, actual finish samples are available upon request.

Premium Finishes*



BA brushed aluminum



RAL#

*Available on select series. Consult product submittal for availability.

