

job name:
 type:

dol.up™ spec sheet 90CRI

material

driver housing

spun .063" aluminum trumpet. available in a variety of finishes listed below.

optics

diffuser

.125" gloss white virgin acrylic. reinforced top opening on 26" and 34".

LED

body illumination

flexible planar LED lighting sheet in 3000K, 3500K, or 4000K (90+ cri), utilizing emitters rated at >77,000hrs L₇₀ per TM21-11 from LM80 data.

downlight

COB in 3000K, 3500K, or 4000K (90+ cri standard), with rated life of >36,000hrs L₇₀(9K) per IES TM21-11, and >70,000hrs projected life.

driver

class 2 power unit, universal input (120-277 vac), 10% minimum dimming level, PF >92, THD <20% at full load, >418khrs MTBF, protections include short circuit, over current, over voltage and over temperature. wired from factory for 0-10v dimming.

mounting

designed to mount to 4 inch octagon junction box (by other). single stainless steel cable and field adjustable gripper. select power cord below. consult factory for installation instructions.

emergency

emergency not available. if required, recommend use of inverter (by other).



catalog number

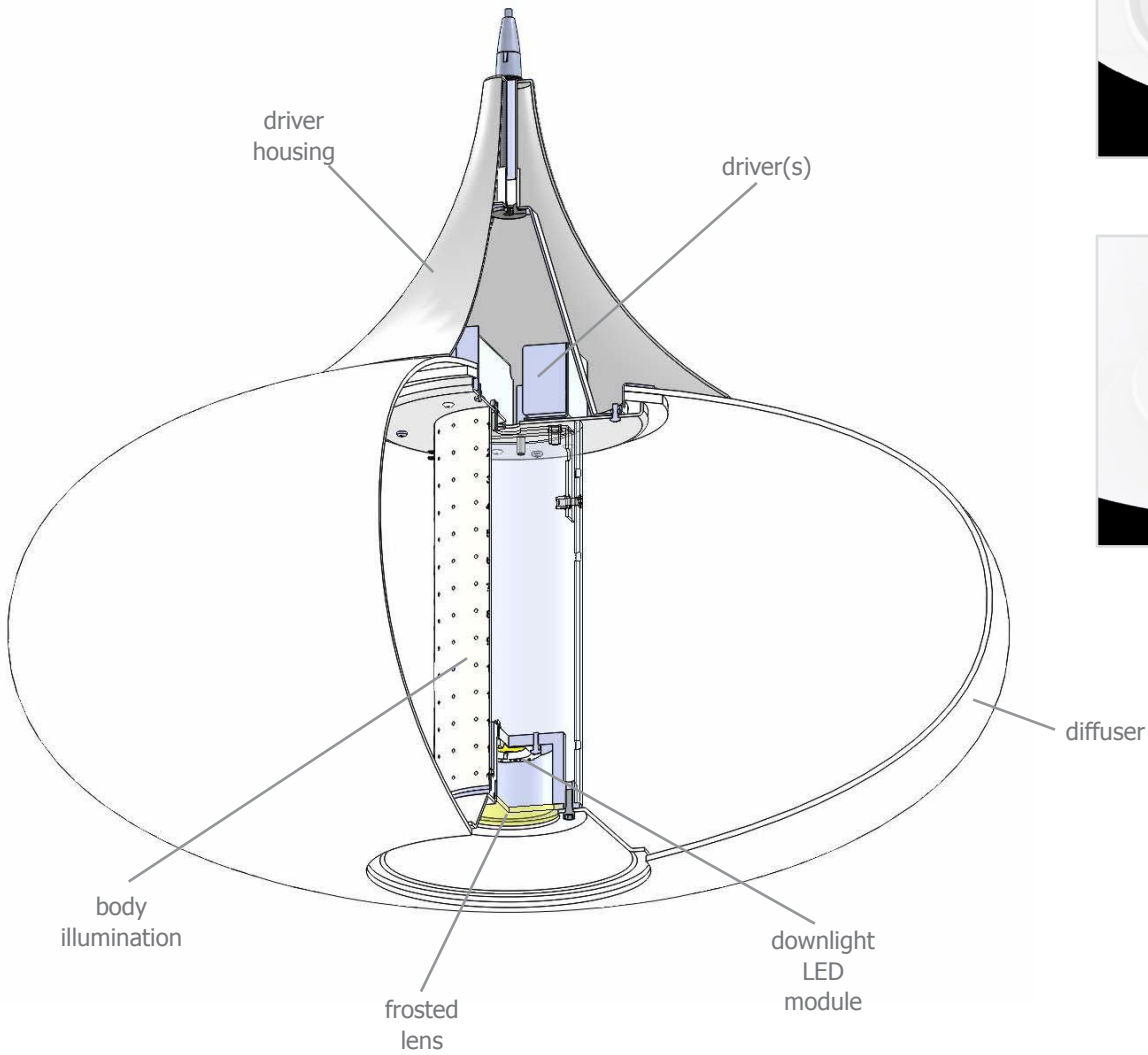
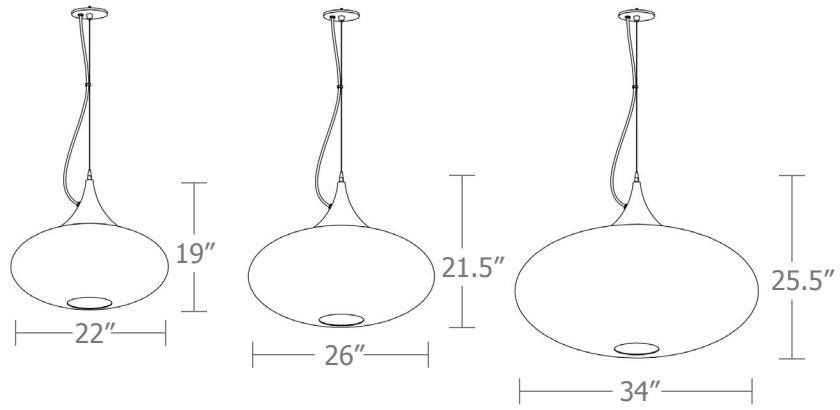
<input type="text"/>	<input type="text"/>	<input type="text"/>	<input type="text"/>	<input type="text"/>	<input type="text"/>	<input type="text"/>	<input type="text"/>
----------------------	----------------------	----------------------	----------------------	----------------------	----------------------	----------------------	----------------------

size	body illumination		downlight		painted finish	power cord	options
	CCT	lumens	CCT	lumens			
P5222 22"dia X 19"ht	30 3000K	LO 1305 lm	30 3000K	NDL no downlight	AP anodized paint	BKPC Black power cord and canopy	6FT 72" cables 12FT 12ft adj suspension
	35 3500K	HI 2080 lm	35 3500K	LO 1300 lm	BS brass		
	40 4000K		40 4000K		BU blue		
P5226 26"dia X 21.5"ht	30 3000K	LO 2080 lm	30 3000K	NDL no downlight	BZ bronze	SBPC Silver braid power cord and white canopy	ELD EldoLED* LUT Lutron* <small>*consult factory</small>
	35 3500K	HI 2675 lm	35 3500K	LO 1300 lm	CP champagne		
	40 4000K		40 4000K		FB flat black		
P5234 34"dia X 25.5"ht	30 3000K	LO 2080 lm	30 3000K	NDL no downlight	GM gun metal	WHPC White power cord and canopy	
	35 3500K	HI 3265 lm	35 3500K	LO 1300 lm	MB military blue		
	40 4000K		40 4000K		MW matte white		
					OR orange		
					RD red		
					SB satin black		
					SS satin silver		
					TG textured gray		
					YO yellow		

premium finish

RAL specify RAL#





downlight



no downlight

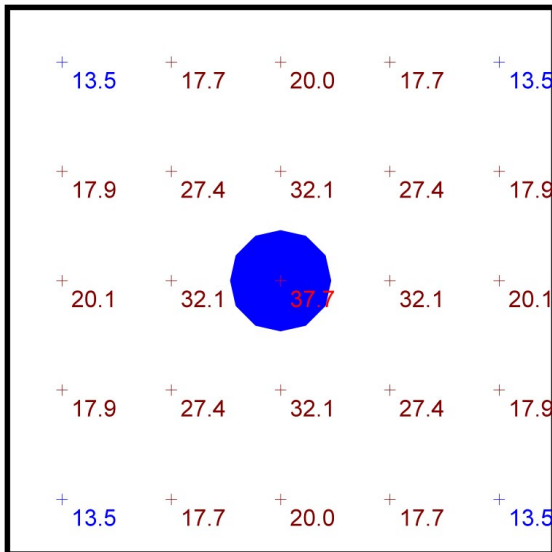
Typical Lighting Layout

Statistics

Description	Symbol	Avg	Max	Min	Max/Min	Avg/Min
dol.up	+	22.1 fc	37.7 fc	13.5 fc	2.8:1	1.6:1

Schedule

Symbol	QTY	Manufacturer	Catalog Number	Description	Lamp	Wattage
○	1	Impact Architectural Lighting	P5226 40HI 40LO	26" dia. pendant dol.up w/ integral downlight	4000k 90cri LED	48



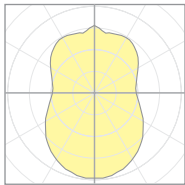
Plan View
Scale - 1" = 2ft

- 10' x 10' x 12'H space
- 80/50/20 reflectances
- bottom of fixture at 8' aff
- FC readings at 2.5' aff
- layout conducted using P5226 with 90 CRI H3 (2670 lm) with LO lumen 90 CRI (1300 lm) integral downlight for total package providing 3970 delivered lumens

Quick Calc Table

Tests indicated below are a combination of direct and indirect. LLF are as close as possible.

for more detailed calculations see table on next page.



19632
P5226-40HI

Cat No	Delivered* Lumens	Watts 120V / 277V	IES File #	LLF to be applied
P5222 LO	1305	11	20696 globe only	.65
	2605	29	20698 with DL	.75
P5222 HI	2080	18	20696 globe only	1.04
	3380	36	20698 with DL	.98
P5226 LO	2080	18	19632 globe only	.82
	3380	36	20698 with DL	.98
P5226 HI	2675	23	19632 globe only	1.06
	3975	41	20698 with DL	1.15
P5234 LO	2080	18	19632 globe only	.82
	3380	36	20698 with DL	.98
P5234 HI	3265	28	19632 globe only	1.29
	4565	46	20698 with DL	1.32

*delivered lumens based on 4000K, 90+ cri

The application of a Light Loss Factor is required to:

- match the lumen output for the power module specified
- incorporate the increased lumen output due to LED/Driver upgrades



Advanced Calculation Table

Tests are for each element separately and must be "stacked" to represent single fixture
 Consult factory for applications assistance

Globe

Cat No	Delivered* Lumens	Watts 120V/277V	IES File #	LLF to be applied
P5222	LO 1305	11	20696	.26
				.24
P5222	HI 2080	18	20696	.52
				.48
P5226	LO 2080	18	19632	.40
				.37
P5226	HI 2675	23	19632	.75
				.70
P5234	LO 2080	18	19632	.58
				.59
P5234	HI 3265	28	19632	.76
				.77

Downlight

Delivered* Lumens	Watts 120V/277V	IES File #	LLF to be applied
LO 1300	18	20697	
LO 1300	18	20697	
LO 1300	18	20697	
LO 1300	18	20697	

*delivered lumens based on 4000K, 90+ cri

The application of a Light Loss Factor is required to:

- match the lumen output for the power module specified
- incorporate the increased lumen output due to LED/Driver upgrades



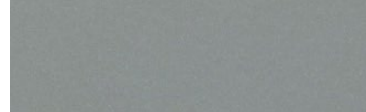
Powder Coat Paint Finishes



MW matte white



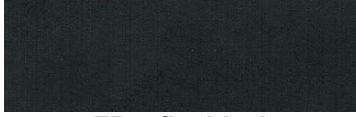
AP anodized paint



SS satin silver



TG textured gray



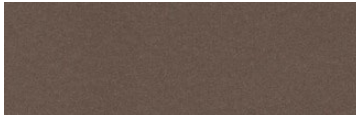
FB flat black



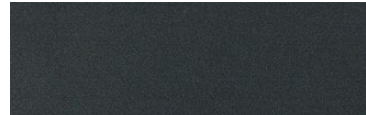
SB satin black



CP champagne



BZ bronze



GM gun metal



OR orange 2011



BU blue 5017



BS brass



RD red 3020



YO yellow 1018



MB military blue

For accurate color verification, actual finish samples are available upon request.

Premium Finishes*



RAL#

*Available on select series. Consult product submittal for availability.