

job name:   
 type:

# dol.up™ spec sheet

**material**

**ballast housing**

spun .063" aluminum trumpet. available in a variety of finishes listed below.

**optics**

**diffuser**

.125" gloss white virgin acrylic. reinforced top opening on 26" and 34".

**efficiency**

constant current driver operates LED consistently, regulating the current flow through it to produce the most consistent light output and efficiency. constant current driver protects LEDs from voltage fluctuations in the building power system, eliminating stress from over voltage, inrush surges, and flicker from voltage fluctuations, assuring long service life.

**LED**

**body illumination**

Heilux LumaFilm® flexible planar LED lighting sheet in 3000K, 3500K, or 4000K (85CRI), utilizing emitters rated at >77,000hrs L70 per TM21-11 from LM80 data.

**downlight**

Bridgelux Vero series in 3000K, 3500K, or 4000K (80CRI) optional 90cri (see below), with rated life of >36,000hrs L70(9K) per IES TM21-11, and >70,000hrs projected life.

**driver**

class 2 power unit, universal input (120-277 vac), 10% minimum dimming level, PF >92, THD <20% at full load, >418khrs MTBF, protections include short circuit, over current, over voltage and over temperature. wired from factory for 0-10v dimming.

**mounting**

designed to mount to 4 inch octagon junction box (by other). single 12ft stainless steel cable and field adjustable gripper. white power cord standard with other colors listed below under options. consult factory for installation instructions.

**emergency**

emergency not available. if required, recommend use of inverter (by other).

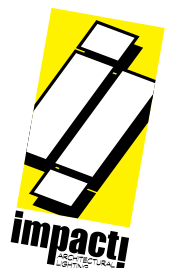


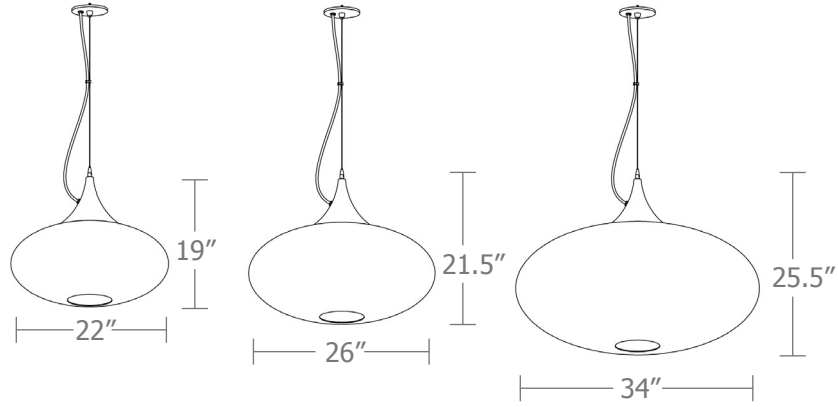
## catalog number

--	--	--	--	--

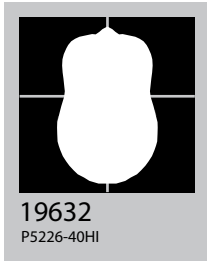
	size	body illumination	downlight	painting finish	options
<b>P5222</b>	22"dia X 19"ht	<b>30LO</b> 3000K <b>30HI</b> 3000K	<b>NDL</b> no downlight <b>30LO</b> 3000K	<b>AP</b> anodized paint <b>BS</b> brass	<b>90CRI</b> <b>BKPC</b> Black power cord and canopy
<b>P5226</b>	26"dia X 21.5"ht	<b>35LO</b> 3500K <b>35HI</b> 3500K	<b>35LO</b> 3500K <b>40LO</b> 4000K	<b>BU</b> blue <b>BZ</b> bronze	<b>SBPC</b> Silver braid power cord and white canopy
<b>P5234</b>	34"dia X 25.5"ht	<b>40LO</b> 4000K <b>40HI</b> 4000K  (see page 2 for delivered lumens)	<b>30HI</b> 3000K <b>35HI</b> 3500K <b>40HI</b> 4000K  <b>CL*</b> xxxxlm *custom lumens consult factory. (400lm-2300lm) canopy size may vary	<b>CP</b> champagne <b>FB</b> flat black <b>GM</b> gun metal <b>MB</b> military blue <b>MW</b> matte white <b>OR</b> orange <b>RD</b> red <b>SB</b> satin black <b>SS</b> satin silver <b>TG</b> textured gray <b>YO</b> yellow	

premium finish  
**RAL** specify RAL#

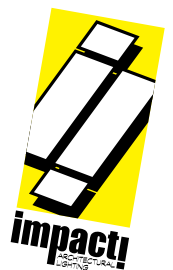




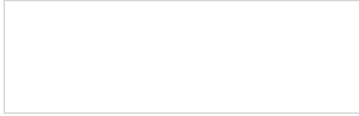
Cat No	Delivered Lumens	Watts		Amps	
		120V	277V	120V	277V
<b>P5222 LO</b>		12	12	0.10	0.04
4000K	1111				
3500K	1044				
3000K	955				
<b>P5222 HI</b>		19	19	0.16	0.07
4000K	1768				
3500K	1661				
3000K	1520				
<b>P5226 LO</b>		21	21	0.18	0.08
4000K	1768				
3500K	1661				
3000K	1520				
<b>P5226 HI</b>		30	30	0.26	0.11
4000K	2525	ies file # 19632			
3500K	2374				
3000K	2172				
<b>P5234 LO</b>		26	26	0.22	0.09
4000K	2525				
3500K	2374				
3000K	2172				
<b>P5234 HI</b>		31	31	0.26	0.11
4000K	2954				
3500K	2895				
3000K	2776				



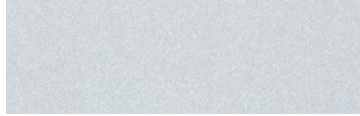
Cat No	Delivered Lumens	Watts		Amps	
		120V	277V	120V	277V
<b>Downlight</b>		18	18	.15	.07
<b>40 LO</b>	1500				
<b>35 LO</b>	1470				
<b>30 LO</b>	1440				
		26	26	.22	.10
<b>40 HI</b>	2300				
<b>35 HI</b>	2250				
<b>30 HI</b>	2210				



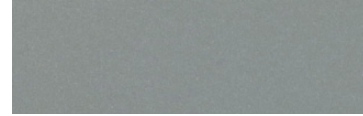
## Powder Coat Paint Finishes



**MW** matte white



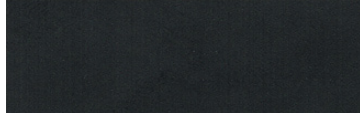
**AP** anodized paint



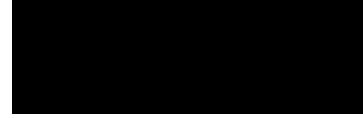
**SS** satin silver



**TG** textured gray



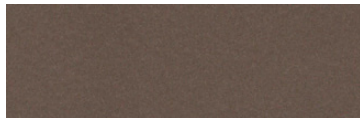
**FB** flat black



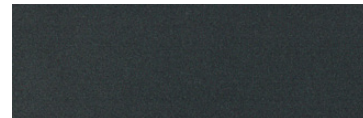
**SB** satin black



**CP** champagne



**BZ** bronze



**GM** gun metal



**OR** orange 2011



**BU** blue 5017



**BS** brass



**RD** red 3020



**YO** yellow 1018



**MB** military blue

For accurate color verification, actual finish samples are available upon request.

## Premium Finishes\*



**RAL#**

\*Available on select series. Consult product submittal for availability.

