

job name:
 type:

n.r.20ob™ spec sheet

material

trim ring

precision CNC spun .063" aluminum. rolled top edge for added strength.

diffuser

.125" virgin white acrylic inner lens.

optics

reflector

22 gauge aluminum powder coat painted high reflectance matte white.

LED

custom LED board in 3000K, 3500K, or 4000K (80+ cri standard) optional 90cri (see below). under normal operating conditions, the LEDs employed are rated for >50,000hrs L70 (6.8K) per IES TM-21 from LM-80 test data. white power cord is standard with other color options listed below.

driver

integral, programmable, UL class P, class 2, universal input (120-277v), constant current, 0-10v dimming, 1% minimum dimming level, PF >.9, THD <20%, protections include open and short circuit, overload and over temperature.

mounting

5"dia. spun steel canopy in satin white. four point vertical suspension of 12 ft long stainless steel cables attach to trim with field adjustable grippers that allow for exact AFF mounting heights. optional quadpod to single point cable suspension, with sloped ceiling adapter.

emergency

recommend use of inverter (by other).



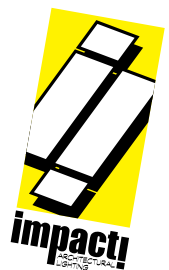
catalog number

--	--	--	--

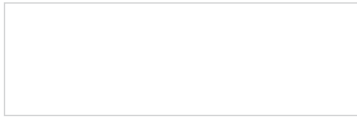
size	LED array	finish	options
P6426 (2ft) 26"dia X 4"ht	30FX 3000K 30LO 3000K 30HI 3000K	AP anodized paint BN brown BR brick red BS brass BU blue BZ bronze CP champagne FB flat black GM gun metal GR green MB military blue MN mint MW matte white OR orange PL purple RD red SB satin black SS satin silver TG textured gray TW textured white YO yellow	90CRI QPD Quadpod hanging system SBPC Silver braid power cord and white canopy WREM wired for remote EM battery pack (by other) (see note above)
P6438 (3ft) 38"dia X 5.5"ht	35FX 3500K 35LO 3500K 35HI 3500K		
P6448 (4ft) 48"dia X 7"ht	40FX 4000K 40LO 4000K 40HI 4000K CL xxxx lm custom lumens consult factory		

premium finish

BA brushed aluminum
RAL specify RAL#



Powder Coat Paint Finishes



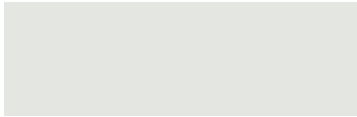
MW matte white



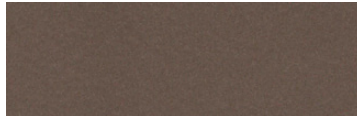
CP champagne



YO yellow 1018



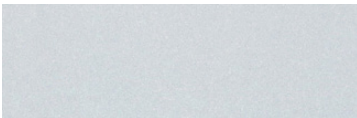
TW textured white



BZ bronze



RD red 3020



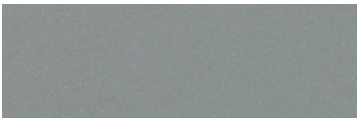
AP anodized paint



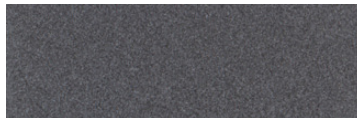
BS brass



BU blue 5017



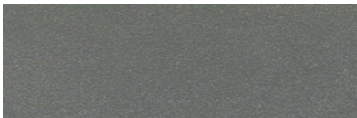
SS satin silver



GM gun metal



OR orange 2011



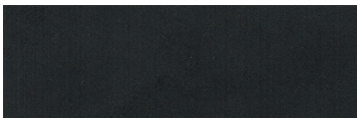
TG textured gray



BR brick red



MN mint 6019



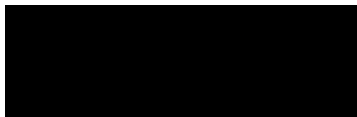
FB flat black



BN brown 8023



GR green 6018



SB satin black



MB military blue



PL purple 4005

For accurate color verification, actual finish samples are available upon request.

Premium Finishes*



BA brushed aluminum



RAL#

*Available on select series. Consult product submittal for availability.

