

job name:
 type:

flt.maxx™ ceiling spec sheet 90CRI

material

trim ring

precision CNC spun .063" aluminum. rolled bottom edge for added strength.

diffuser

.177" non-glare light matte high transmission acrylic drop lens held in place with allen key set screws recessed into trim ring.

optics

reflector

.050" aluminum array platform painted high reflectance (>92%) matte white powder coat.

LED

custom LED board in 3000K, 3500K, or 4000K (90+ cri standard)9.

under normal operating conditions, the LEDs employed are rated for >50,000hrs L70 (6.8K) per IES TM-21 from LM-80 test data. white power cord is standard with other color options listed below.

driver

integral, programmable, UL class P, class 2, universal input (120-277v), constant current, 0-10v dimming, 1% minimum dimming level, PF >.9, THD <20%, protections include open and short circuit, overload and over temperature.

mounting

utilizes a custom mounting ring assembly designed to draw trim ring tight to the ceiling. consult factory for installation instructions.

emergency

recommend use of inverter (by other).



catalog number

--	--	--	--	--

size

C7826
(2ft)
26" dia X 4.75"ht

C7838
(3ft)
38" dia X 6.75"ht

CCT

3000K
3500K
4000K

lumens

FX 2600 lm
LO 5100 lm
HI 8300 lm
HX 9700
CL xxxx lm
custom lumens
consult factory

3000K
3500K
4000K

FX 5150 lm
LO 10200 lm
HI 16600 lm
HX 19400 lm
CL xxxx lm
custom lumens
consult factory

painted finish

AP anodized paint
BS brass
BU blue
BZ bronze
CP champagne
FB flat black
GM gun metal
MB military blue
MW matte white
OR orange
RD red
SB satin black
SS satin silver
TG textured gray
YO yellow

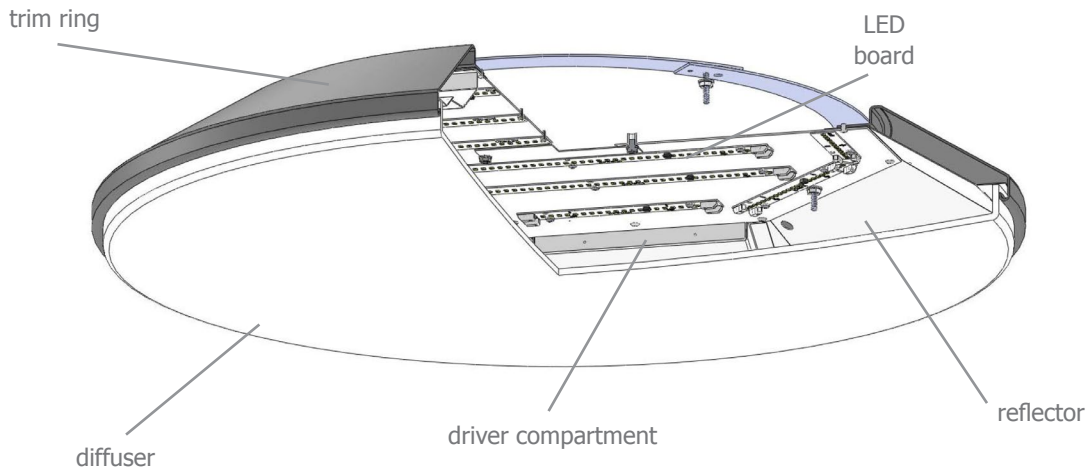
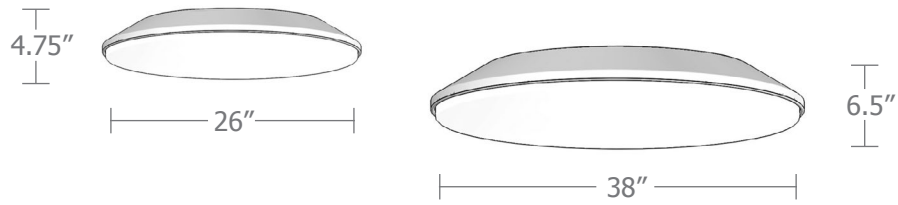
premium finish

RAL specify RAL#

options

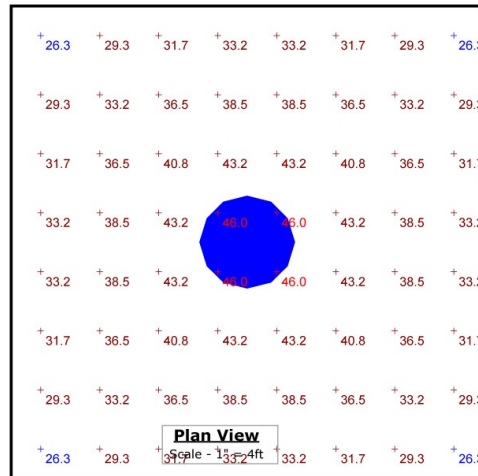
WREM wired for remote
EM battery pack
(by other)
(see note above)
ELD EldoLED*
LUT Lutron*
*consult factory





Typical Lighting Layout

- 14' x 14' x 20'H space
- 80/50/20 reflectances
- bottom of fixture at 16' aff
- FC readings at 2.5' aff
- layout conducted using 38" dia. unit with HI lumen 90 CRI package providing 16600 delivered lumens



Statistics

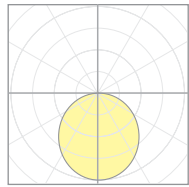
Description	Symbol	Avg	Max	Min	Max/Min	Avg/Min
ft.maxx ceiling	+	35.7 fc	46.0 fc	26.3 fc	1.7:1	1.4:1



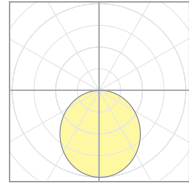
Calculation Table

The application of a Light Loss Factor is required to:

- match the lumen output for the power module specified
- incorporate the increased lumen output due to LED/Driver upgrades



18682
C7826



11208
C7838

Cat No	Delivered* Lumens	Watts 120V / 277V	IES File #	LLF to be applied
C7826 FX	2600	30	18681	.61
C7826 LO	5100	59	18681	1.20
C7826 HI	8300	96	18682	1.21
C7826 HX	9700	112	18682	1.42
C7838 FX	5150	59	18686	.77
C7838 LO	10200	118	18686	1.53
C7838 HI	16600	192	11208	1.20
C7838 HX	19400	224	11208	1.40

*delivered lumens based on 4000K, 90+ cri

The application of a Light Loss Factor is required to:

- match the lumen output for the power module specified
- incorporate the increased lumen output due to LED/Driver upgrades

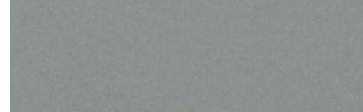
Powder Coat Paint Finishes



MW matte white



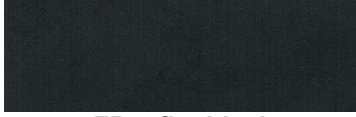
AP anodized paint



SS satin silver



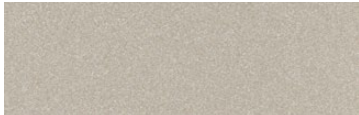
TG textured gray



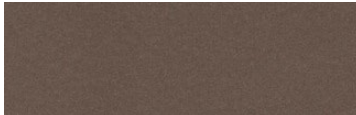
FB flat black



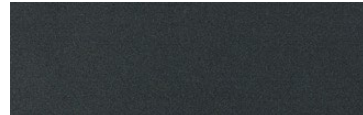
SB satin black



CP champagne



BZ bronze



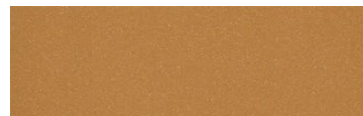
GM gun metal



OR orange 2011



BU blue 5017



BS brass



RD red 3020



YO yellow 1018



MB military blue

For accurate color verification, actual finish samples are available upon request.

Premium Finishes*



RAL#

*Available on select series. Consult product submittal for availability.