

job name:   
 type:

**flt.maxx™ ceiling spec sheet 90CRI**

**material**  
**trim ring**  
 precision CNC spun .063" aluminum. rolled bottom edge for added strength.  
**diffuser**  
 .177" non-glare light matte high transmission acrylic drop lens held in place with allen key set screws recessed into trim ring.  
**optics**  
**reflector**  
 .050" aluminum array platform painted high reflectance (>92%) matte white powder coat.



**LED**  
 custom LED board in 3000K, 3500K, or 4000K (90+ cri standard).  
 under normal operating conditions, the LEDs employed are rated for >50,000hrs L70 (6.8K) per IES TM-21 from LM-80 test data. white power cord is standard with other color options listed below.

**driver**  
 integral, programmable, UL class P, class 2, universal input (120-277v), constant current, 0-10v dimming, 1% minimum dimming level, PF >.9, THD <20%, protections include open and short circuit, overload and over temperature.

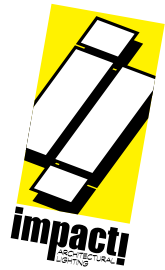
**mounting**  
 designed to mount to 4 inch octagon junction box (by other). consult factory for installation instructions.

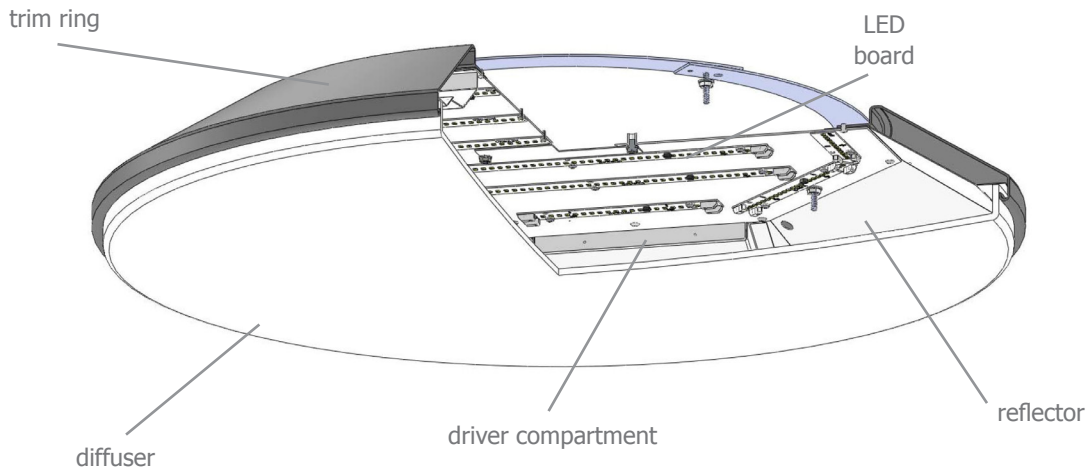
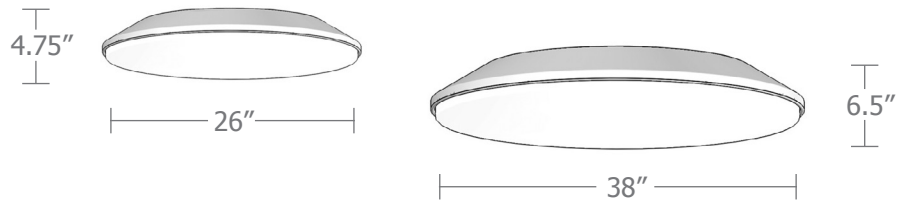
**emergency**  
 recommend use of inverter (by other).

**catalog number**

--	--	--	--	--

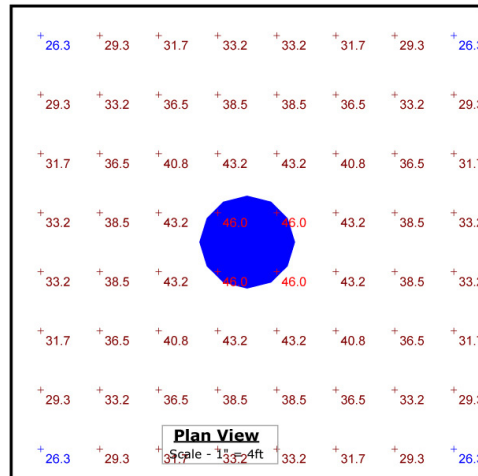
size	CCT	lumens	painting finish	options
<b>C7826</b> (2ft) 26" dia X 4.75"ht	3000K	<b>FX</b> 2600 lm	<b>AP</b> anodized paint	<b>WREM</b> wired for remote EM battery pack (by other) (see note above)
	3500K	<b>LO</b> 5100 lm	<b>BS</b> brass	
	4000K	<b>HI</b> 8300 lm	<b>BU</b> blue	<b>ELD</b> EldoLED*
			<b>HX</b> 9700	<b>BZ</b> bronze
<b>C7838</b> (3ft) 38" dia X 6.75"ht		<b>CL</b> xxxx lm <small>custom lumens consult factory</small>	<b>CP</b> champagne	*consult factory
	3000K	<b>FX</b> 5150 lm	<b>FB</b> flat black	
	3500K	<b>LO</b> 10200 lm	<b>GM</b> gun metal	
	4000K	<b>HI</b> 16600 lm	<b>MB</b> military blue	
		<b>HX</b> 19400 lm	<b>MW</b> matte white	
		<b>CL</b> xxxx lm <small>custom lumens consult factory</small>	<b>OR</b> orange	
			<b>RD</b> red	
			<b>SB</b> satin black	
			<b>SS</b> satin silver	
			<b>TG</b> textured gray	
			<b>YO</b> yellow	
			<b>premium finish</b>	
			<b>RAL</b> specify RAL#	





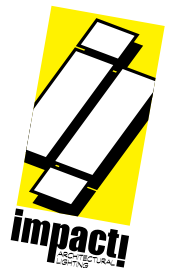
### Typical Lighting Layout

- 14' x 14' x 20'H space
- 80/50/20 reflectances
- bottom of fixture at 16' aff
- FC readings at 2.5' aff
- layout conducted using 38" dia. unit with HI lumen 90 CRI package providing 16600 delivered lumens



#### Statistics

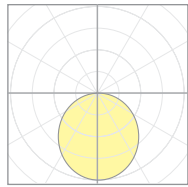
Description	Symbol	Avg	Max	Min	Max/Min	Avg/Min
ft.maxx ceiling	+	35.7 fc	46.0 fc	26.3 fc	1.7:1	1.4:1



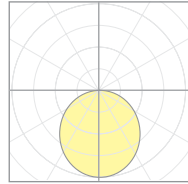
## Calculation Table

The application of a Light Loss Factor is required to:

- match the lumen output for the power module specified
- incorporate the increased lumen output due to LED/Driver upgrades



18682  
C7826



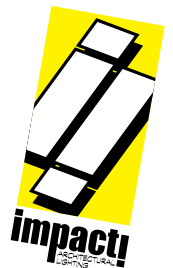
11208  
C7838

Cat No	Delivered* Lumens	Watts 120V / 277V	IES File #	LLF to be applied
<b>C7826 FX</b>	2600	30	<b>18681</b>	.61
<b>C7826 LO</b>	5100	59	<b>18681</b>	1.20
<b>C7826 HI</b>	8300	96	<b>18682</b>	1.21
<b>C7826 HX</b>	9700	112	<b>18682</b>	1.42
<b>C7838 FX</b>	5150	59	<b>18686</b>	.77
<b>C7838 LO</b>	10200	118	<b>18686</b>	1.53
<b>C7838 HI</b>	16600	192	<b>11208</b>	1.20
<b>C7838 HX</b>	19400	224	<b>11208</b>	1.40

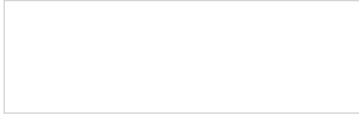
\*delivered lumens based on 4000K, 90+ cri

The application of a Light Loss Factor is required to:

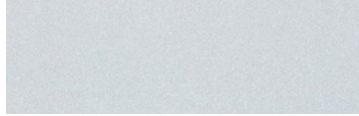
- match the lumen output for the power module specified
- incorporate the increased lumen output due to LED/Driver upgrades



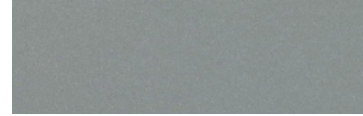
## Powder Coat Paint Finishes



**MW** matte white



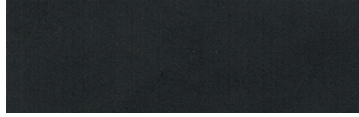
**AP** anodized paint



**SS** satin silver



**TG** textured gray



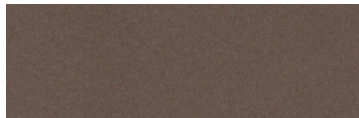
**FB** flat black



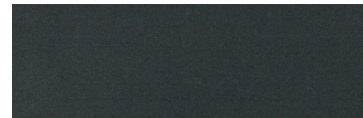
**SB** satin black



**CP** champagne



**BZ** bronze



**GM** gun metal



**OR** orange 2011



**BU** blue 5017



**BS** brass



**RD** red 3020



**YO** yellow 1018



**MB** military blue

For accurate color verification, actual finish samples are available upon request.

## Premium Finishes\*



**RAL#**

\*Available on select series. Consult product submittal for availability.

