

job name:   
 type:

## flt.maxx™ ceiling spec sheet

**material**

**trim ring**  
 precision CNC spun .063" aluminum. rolled bottom edge for added strength.

**diffuser**  
 .187" virgin matte white acrylic drop lens held in place with allen key set screws recessed into trim ring.

**optics**

**reflector**  
 .050" aluminum array platform painted high reflectance (>92%) matte white powder coat.

**LED**

custom LED board in 3000K, 3500K, or 4000K (80+ cri standard) optional 90cri (see below). under normal operating conditions, the LEDs employed are rated for >50,000hrs L70 (6.8K) per IES TM-21 from LM-80 test data. white power cord is standard with other color options listed below.

**driver**

integral, programmable, UL class P, class 2, universal input (120-277v), constant current, 0-10v dimming, 1% minimum dimming level, PF >.9, THD <20%, protections include open and short circuit, overload and over temperature.

**mounting**

designed to mount to 4 inch octagon junction box (by other). consult factory for installation instructions.

**emergency**

recommend use of inverter (by other).



## catalog number

--	--	--	--

**size**

**C7826**  
 (2ft) 26"dia X 4.75"ht

**C7838**  
 (3ft) 38"dia X 6.5"ht

**LED array**

**30FX** 3000K

**30LO** 3000K

**30HI** 3000K

**35FX** 3500K

**35LO** 3500K

**35HI** 3500K

**40FX** 4000K

**40LO** 4000K

**40HI** 4000K

**CL** xxxx lm  
 custom lumens  
 consult factory

**painted finish**

**AP** anodized paint

**BS** brass

**BU** blue

**BZ** bronze

**CP** champagne

**FB** flat black

**GM** gun metal

**MB** military blue

**MW** matte white

**OR** orange

**RD** red

**SB** satin black

**SS** satin silver

**TG** textured gray

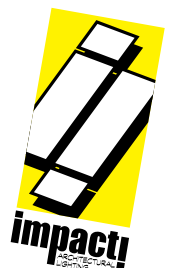
**YO** yellow

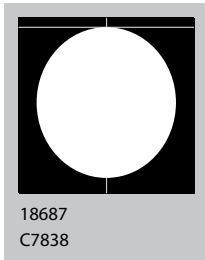
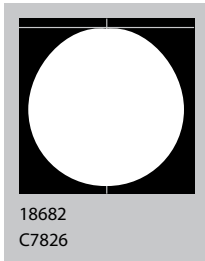
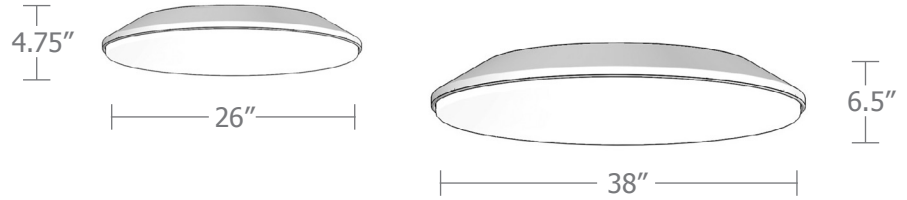
**premium finish**

**RAL** specify RAL#

**options**

**90CRI**

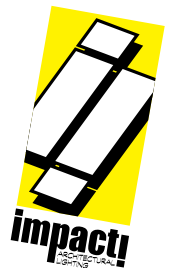




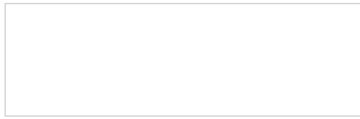
Cat No	Delivered* Lumens	Watts		Amps	
		120V / 277V	120V	277V	
<b>C7826 FX</b>	2340	28	0.23	0.10	
<b>C7826 LO</b>	4680	57	.48	.21	
<b>C7826 HI</b>	7020	85	.71	.31	
		ies file # 18685 (no top lens)			
<b>C7838 FX</b>	4180	50	.42	.18	
<b>C7838 LO</b>	8360	101	.84	.36	
		ies file # 18688 (no top lens)			
<b>C7838 HI</b>	13370	162	1.35	.58	
		ies file # 18689 (no top lens)			

\*delivered lumens based on 4000K, 80+ cri (90cri multiplier .83)

\* consult factory for indirect lumens



## Powder Coat Paint Finishes



**MW** matte white



**AP** anodized paint



**SS** satin silver



**TG** textured gray



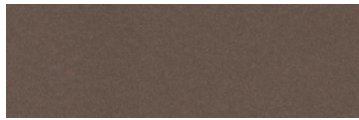
**FB** flat black



**SB** satin black



**CP** champagne



**BZ** bronze



**GM** gun metal



**OR** orange 2011



**BU** blue 5017



**BS** brass



**RD** red 3020



**YO** yellow 1018



**MB** military blue

For accurate color verification, actual finish samples are available upon request.

## Premium Finishes\*



**RAL#**

\*Available on select series. Consult product submittal for availability.

