

job name:
 type:

9" tiki™ spec sheet 90CRI

material

housing

two-piece precision CNC spun .063" aluminum. downlight housing with rolled bottom edge for added strength. inverted bell upright element.

downlight array platform

.080" spun aluminum.

bottom lens (optional)

.125" P95 frosted acrylic flat lens with 3 finger holes.

optics

uplight (optional)

340° omnidirectional silicone optic

downlight

.050" spun aluminum conical reflector finished in high reflectance (>92%) matte white powder coat.

LED module

COB array in 2700K, 3000K, 3500K, or 4000K. (call factory for 5000K) (90+ cri standard). under normal operating conditions, the LEDs employed are rated for >50,000hrs L70 (6.8K) per IES TM-21 from LM-80 test data.

driver

integral, class 2, universal input (120-277v), constant current, 0-10v dimming, 1% minimum dimming level, PF >.9, THD <20%, protections include open and short circuit, overload and over temperature.

mounting

5"dia. spun steel canopy in satin white with 6ft stainless steel cable tripod and field adjustable grippers that allow for exact AFF mounting heights. or select 12ft adjustable suspension. (drawing below)

finish

select from standard powder coat paint finishes or specify RAL# for custom colors.

emergency

recommend use of inverter (by other).

optional WREM: wired for remote EM battery (by other). 2nd power cord required.



catalog number

P5109						
size	direct LED	indirect LED	painted finish	power cord	options	
P5109 9"dia X 11.25"ht	CCT lumens	CCT lumens	AP anodized paint	WHPC white power cord and canopy	6FT 72" cables	
see pages 2 & 3 for info on P5113 and P5117	27 2700K LO 995 lm	27 2700K UP 970 lm	BS brass	BKPC black power cord and canopy	12FT 12ft adj suspension	
	30 3000K HI 1985 lm	30 3000K NUL no uplight	BU blue	SBPC silver braid power cord and white canopy	BL Bottom lens	
	35 3500K HX 2780 lm	35 3500K	BZ bronze		DCDM dual circuit wiring on dimming direct/indirect (requires 2nd power cord)	
	40 4000K	40 4000K	CP champagne		WREM wired for remote EM battery pack (by other) (see note above)	
			FB flat black		ELD EldoLED*	
			GM gun metal		LUT Lutron*	
			MB military blue			
			MW matte white			
			OR orange			
			RD red			
			SB satin black			
			SS satin silver			
			TG textured gray			
			YO yellow			
			premium finish			
			RAL specify RAL#			



*consult factory



job name:
 type:

13" tiki™ spec sheet 90CRI

material

housing

two-piece precision CNC spun .063" aluminum. downlight housing with rolled bottom edge for added strength. inverted bell upright element.

downlight array platform

.080" spun aluminum.

bottom lens (optional)

.125" P95 frosted acrylic flat lens with 3 finger holes.

optics

uplight (optional)

340° omnidirectional silicone optic

downlight

.050" spun aluminum conical reflector finished in high reflectance (>92%) matte white powder coat.

LED module

COB array in 2700K, 3000K, 3500K, or 4000K. (call factory for 5000K) (90+ cri standard). under normal operating conditions, the LEDs employed are rated for >50,000hrs L70 (6.8K) per IES TM-21 from LM-80 test data. for dual circuit wiring on direct/indirect dimming luminaires, specify under options.

driver

integral, programmable, UL class P, class 2, universal input (120-277v), constant current, 0-10v dimming, 1% minimum dimming level, PF >.9, THD <20%, protections include open and short circuit, overload and over temperature.

mounting

5"dia. spun steel canopy in satin white with 6ft stainless steel cable tripod and field adjustable grippers that allow for exact AFF mounting heights. or select 12ft adjustable suspension. (drawing below)

finish

select from standard powder coat paint finishes listed below or specify RAL# for custom colors.

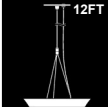

emergency

recommend use of inverter (by other).

optional WREM: wired for remote EM battery (by other). 2nd power cord required.



catalog number

P5113						
size	direct LED	indirect LED	painted finish	power cord	options	
P5113 13"dia X 16"ht see page 3 for info on P5117	CCT lumens 27 2700K FX 1585 lm 30 3000K LO 2975 lm 35 3500K HI 3375 lm 40 4000K HX 4120 lm CL* xxxx lm custom lumens consult factory	CCT lumens 27 2700K FX 775 lm 30 3000K LO 1745 lm 35 3500K HI 1940 lm 40 4000K NUL no upright CL* xxxx lm custom lumens consult factory	AP anodized paint BS brass BU blue BZ bronze CP champagne FB flat black GM gun metal MB military blue MW matte white OR orange RD red SB satin black SS satin silver TG textured gray YO yellow premium finish RAL specify RAL#	WHPC white power cord and canopy BKPC black power cord and canopy SBPC silver braid power cord and white canopy	6FT 72" cables 12FT 12ft adj suspension BL Bottom lens DCDM dual circuit wiring on dimming direct/indirect (requires 2nd power cord) WREM wired for remote EM battery pack (by other) (see note above) ELD EldoLED* LUT Lutron* *consult factory	 12FT  BL



job name:
 type:

17" tiki™ spec sheet 90CRI

material

housing

two-piece precision CNC spun .063" aluminum. downlight housing with rolled bottom edge for added strength. inverted bell upright element.

downlight array platform

.080" spun aluminum.

bottom lens (optional)

.125" P95 frosted acrylic flat lens with 3 finger holes.

optics

uplight (optional)

340° omnidirectional silicone optic

downlight

.050" spun aluminum conical reflector finished in high reflectance (>92%) matte white powder coat.

LED module

COB array in 2700K, 3000K, 3500K, or 4000K. (call factory for 5000K) (90+ cri standard). under normal operating conditions, the LEDs employed are rated for >50,000hrs L70 (6.8K) per IES TM-21 from LM-80 test data. for dual circuit wiring on direct/indirect dimming luminaires, specify under options.

driver

integral, programmable, UL class P, class 2, universal input (120-277v), constant current, 0-10v dimming, 1% minimum dimming level, PF >.9, THD <20%, protections include open and short circuit, overload and over temperature.

mounting

5"dia. spun steel canopy in satin white with 6ft stainless steel cable tripod and field adjustable grippers that allow for exact AFF mounting heights. or select 12ft adjustable suspension. (drawing below)

finish

select from standard powder coat paint finishes listed below or specify RAL# for custom colors.

emergency

recommend use of inverter (by other).

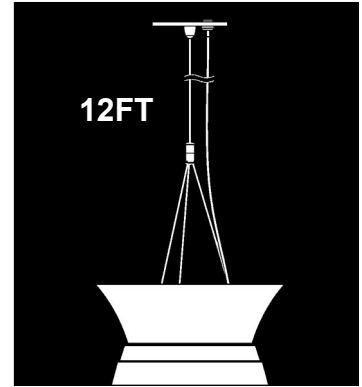
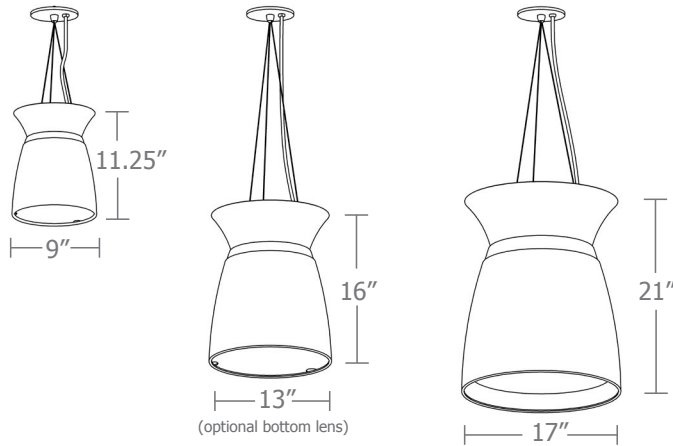
optional WREM: wired for remote EM battery (by other). 2nd power cord required.



catalog number

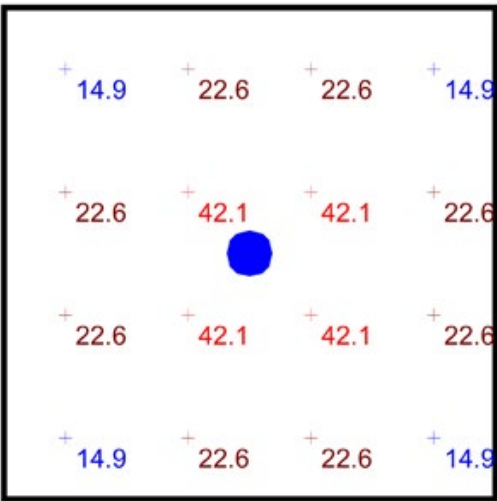
P5117						
size	direct LED	indirect LED	painted finish	power cord	options	
P5117 17"dia X 21"ht	CCT lumens	CCT lumens			6FT	72" cables
	27 2700K FX 2580 lm	27 2700K FX 775 lm	AP anodized paint	WHPC white power cord and canopy	12FT	12ft adj suspension
	30 3000K LO 3375 lm	30 3000K LO 1550 lm	BS brass	BKPC black power cord and canopy	BL	Bottom lens
	35 3500K HI 4550 lm	35 3500K HI 2135 lm	BU blue	SBPC silver braid power cord and white canopy	DCDM	dual circuit wiring on dimming direct/indirect (requires 2nd power cord)
	40 4000K HX 4985 lm	40 4000K NUL no uplight	BZ bronze		WREM	wired for remote EM battery pack (by other) (see note above)
	CL* xxxx lm custom lumens consult factory	CL* xxxx lm custom lumens consult factory	CP champagne		ELD	EldoLED*
			FB flat black		LUT	Lutron*
			GM gun metal			
			MB military blue			
			MW matte white			
			OR orange			
			RD red			
			SB satin black			
			SS satin silver			
			TG textured gray			
			YO yellow			
			premium finish			
			RAL specify RAL#			





Quick Calc Typical Lighting Layout

- 8' x 8' x 10'H space
- 80/50/20 reflectances
- bottom of fixture at 8' aff
- FC readings at 2.5' aff
- layout conducted using P5109-HX-UP (2780 direct / 970 indirect delivered lumens)-BL

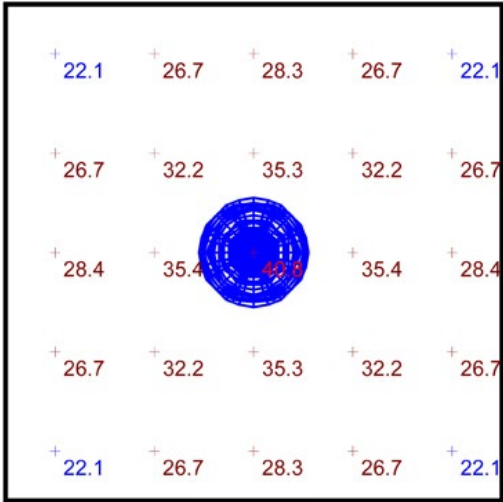


Plan View
Scale - 1" = 2ft

Statistics						
Description	Symbol	Avg	Max	Min	Max/Min	Avg/Min
tiki	+	25.5 fc	42.1 fc	14.9 fc	2.8:1	1.7:1

Advanced Calculation Typical Lighting Layout

- 10' x 10' x 20'H space
- 80/50/20 reflectances
- 90 CRI
- bottom of fixture at 14' aff (lensed bottom)
- FC readings at 2.5' aff
- layout conducted using two separate independent photometric files. Downlight is 4985 lumen HX output, while the Uplight is 2135 lumen HI output.



Plan View
Scale - 1" = 2ft

Schedule							
Symbol	Label	Quantity	Manufacturer	Catalog Number	Description	Lamp	Number Lamps
	A	1	Impact Architectural Lightng	P5117-40HI-NUL-BL (Down light only optics)	Photometrics for downlight only portion of 17" dia. tiki pendant w/ bottom lens	4000k LED 90 CRI	1
	B	1	Impact Architectural Lightng	P5117-NDL-40HI (Uplight only optics)	Photometrics for uplight only portion of 17" tiki pendant	4000k LED 90 CRI	1

Statistics						
Description	Avg	Symbol	Max	Min	Max/Min	Avg/Min
tiki adv separate ies files	29.1 fc	+	40.8 fc	22.1 fc	1.8:1	1.3:1



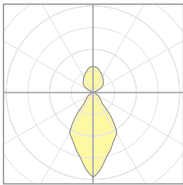
Quick Calc Table

Tests indicated below are a combination of direct and indirect. LLF are as close as possible.

for more detailed calculations see table on next page.

Cat No	Direct Delivered* Lumens	Indirect Delivered* Lumens	Watts 120V / 277V	IES File #	LLF to be applied
P5109 LO UP	995	970	20	20155 open	.59
				20154 lensed	.55
P5109 HI UP	1985	970	30	20155 open	.86
				20154 lensed	.82
P5109 HX UP	2780	970	39	20155 open	1.09
				20154 lensed	1.03
P5113 FX FX	1585	775	24	20619.1 open	.42
				20620.1 lensed	.39
P5113 LO LO	2975	1745	49	20619.1 open	.83
				20620.1 lensed	.73
P5113 HI HI	3375	1940	55	20619.1 open	.94
				20620.1 lensed	.87
P5113 HX HI	4120	1940	62	20619.1 open	1.07
				20620.1 lensed	.99
P5117 FX FX	2580	775	35	20689 open	.54
				20620.1 lensed	.55
P5117 LO LO	3375	1550	51	20689 open	.79
				20620.1 lensed	.81
P5117 HI HI	4550	2135	68	20689 open	1.07
				20620.1 lensed	1.09
P5117 HX HI	4985	2135	73	20689 open	1.14
				20620.1 lensed	1.17

*delivered lumens based on 4000K, 90+ cri



20689
P5117-40CL (4000lm) 40HI

The application of a Light Loss Factor is required to:

- match the lumen output for the power module specified
- incorporate the increased lumen output due to LED/Driver upgrades



Advanced Calculation Table

Tests are for each element separately and must be "stacked" to represent single fixture
Consult factory for applications assistance

Direct

Cat No	Delivered* Lumens	Watts 120V/277V	IES File #	LLF to be applied
P5109	LO 995	10	20616.1 open	.26
			20617.1 lensed	.24
P5109	HI 1985	21	20616.1 open	.52
			20617.1 lensed	.48
P5109	HX 2780	29	20616.1 open	.72
			20617.1 lensed	.67

P5113	FX 1585	16	20616.1 open	.40
			20617.1 lensed	.37
P5113	LO 2975	31	20616.1 open	.75
			20617.1 lensed	.70
P5113	HI 3375	35	20616.1 open	.85
			20617.1 lensed	.79
P5113	HX 4126	42	20616.1 open	1.08
			20617.1 lensed	1.00

P5117	FX 2580	27	20688 open	.58
			20617.1 lensed	.59
P5117	LO 3375	35	20688 open	.76
			20617.1 lensed	.77
P5117	HI 4550	47	20688 open	1.00
			20617.1 lensed	1.01
P5117	HX 4985	51	20688 open	1.19
			20617.1 lensed	1.21

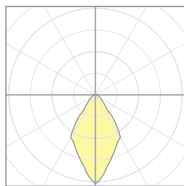
*delivered lumens based on 4000K, 90+ cri

Indirect

Delivered* Lumens	Watts 120V/277V	IES File #	LLF to be applied
UP 970	10	20618.1	.51

FX 775	8	20618.1	.41
LO 1745	18	20618.1	.91
HI 1940	20	20618.1	1.01

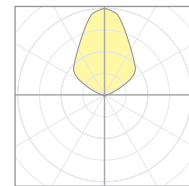
FX 775	8	20618.1	.41
LO 1550	16	20618.1	.81
HI 2135	22	20618.1	1.12



20688
P5117-40CL (4000lm) NUL

The application of a Light Loss Factor is required to:

- match the lumen output for the power module specified
- incorporate the increased lumen output due to LED/Driver upgrades



20618.1
P5113-NDL-40HI



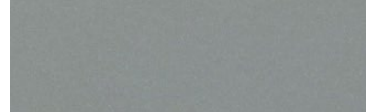
Powder Coat Paint Finishes



MW matte white



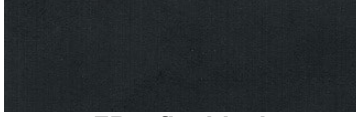
AP anodized paint



SS satin silver



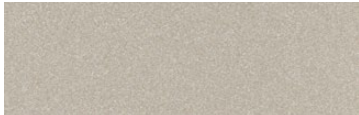
TG textured gray



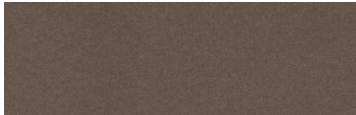
FB flat black



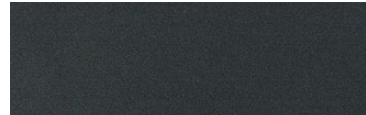
SB satin black



CP champagne



BZ bronze



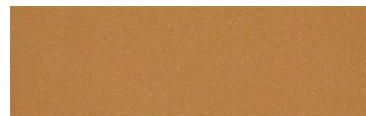
GM gun metal



OR orange 2011



BU blue 5017



BS brass



RD red 3020



YO yellow 1018



MB military blue

For accurate color verification, actual finish samples are available upon request.

Premium Finishes*



RAL#

*Available on select series. Consult product submittal for availability.