

job name:   
 type:

## 18"/26" wāf.r™ ceiling spec sheet 90CRI

**material**

**trim ring**

precision CNC spun .063" aluminum. rolled bottom edge for added strength.

**diffuser**

.177" non-glare light matte high transmission acrylic drop lens held in place with allen key set screws recessed into trim ring.

**optics**

**reflector**

.050" aluminum array platform painted high reflectance (>92%) matte white powder coat provides 100% downlight. for uplight, specify under options.

**LED**

custom LED board in 3000K, 3500K, or 4000K 90+ cri standard. under normal operating conditions, the LEDs employed are rated for >50,000hrs L70 (6.8K) per IES TM-21 from LM-80 test data.

**driver**

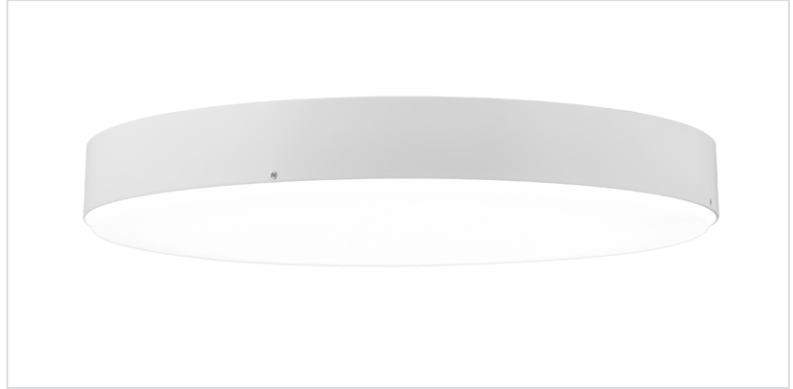
integral, programmable, UL class P, class 2, universal input (120-277v), constant current, 0-10v dimming, 1% minimum dimming level, PF >.9, THD <20%, protections include open and short circuit, overload and over temperature.

**mounting**

18" designed to mount to 4 inch octagon junction box (by other). 26" utilizes a custom mounting ring assembly designed to draw trim ring tight to the ceiling. consult factory for installation instructions.

**emergency**

recommend use of inverter (by other). optional WREM: wired for remote EM battery (by other).

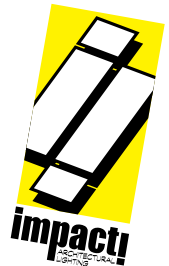


## catalog number

--	--	--	--	--

size	CCT	lumens	painting finish	options
<b>C5518</b> 18" dia X 3" ht	<b>30</b> 3000K	<b>FX</b> 1300 lm	<b>AP</b> anodized paint	<b>ELD</b> EldoLED*
	<b>35</b> 3500K	<b>LO</b> 2550 lm	<b>BS</b> brass	<b>LUT</b> Lutron*
	<b>40</b> 4000K	<b>HI</b> 4100 lm	<b>BU</b> blue	*consult factory
		<b>CL</b> xxxx lm custom lumens consult factory	<b>BZ</b> bronze	
<b>C5526</b> (2ft) 26" dia X 5" ht  <small>See p.2 for info on P5538 &amp; P5548</small>	<b>30</b> 3000K	<b>FX</b> 2600 lm	<b>CP</b> champagne	
	<b>35</b> 3500K	<b>LO</b> 5100 lm	<b>FB</b> flat black	
	<b>40</b> 4000K	<b>HI</b> 8300 lm	<b>GM</b> gun metal	
		<b>HX</b> 9700 lm	<b>MB</b> military blue	
	<b>CL</b> xxxx lm custom lumens consult factory	<b>MW</b> matte white	<b>OR</b> orange	
		<b>RD</b> red	<b>SB</b> satin black	
		<b>SS</b> satin silver	<b>TG</b> textured gray	
		<b>YO</b> yellow		

**premium finish**  
**RAL** specify RAL#



job name:   
 type:

## 38"/48" wāf.r™ ceiling spec sheet 90CRI

**material**

**trim ring**

precision CNC spun .063" aluminum. rolled bottom edge for added strength.

**diffuser**

.177" non-glare light matte high transmission acrylic drop lens held in place with allen key set screws recessed into trim ring.

**optics**

**reflector**

.050" aluminum array platform painted high reflectance (>92%) matte white powder coat provides 100% downlight. for uplight, specify under options.

**LED**

custom LED board in 3000K, 3500K, or 4000K 90+ cri standard. under normal operating conditions, the LEDs employed are rated for >50,000hrs L70 (6.8K) per IES TM-21 from LM-80 test data.

**driver**

integral, programmable, UL class P, class 2, universal input (120-277v), constant current, 0-10v dimming, 1% minimum dimming level, PF >.9, THD <20%, protections include open and short circuit, overload and over temperature.

**mounting**

utilizes a custom mounting ring assembly designed to draw trim ring tight to the ceiling. consult factory for installation instructions.

**emergency**

recommend use of inverter (by other). optional WREM: wired for remote EM battery (by other).



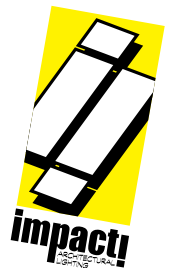
## catalog number

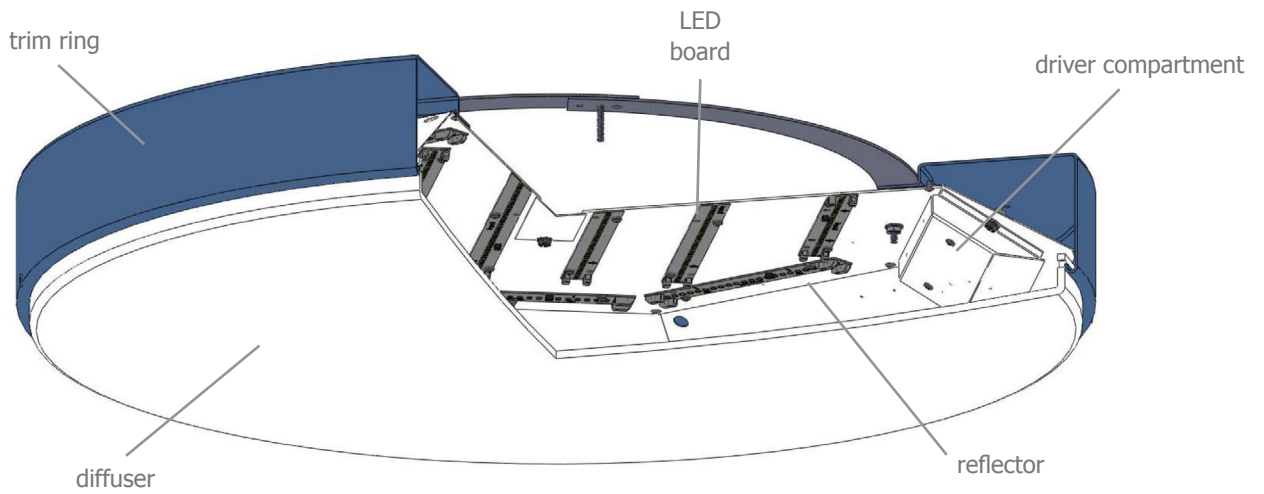
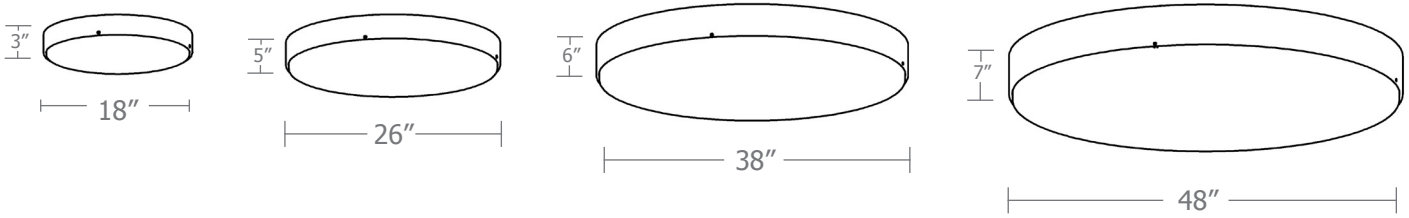
--	--	--	--	--

size	CCT	lumens	painted finish	options
<b>C5538</b> (3ft) 38"dia X 6"ht	<b>30</b> 3000K	<b>FX</b> 5150 lm	<b>AP</b> anodized paint	<b>ELD</b> EldoLED*
	<b>35</b> 3500K	<b>LO</b> 10200 lm	<b>BS</b> brass	<b>LUT</b> Lutron*
	<b>40</b> 4000K	<b>HI</b> 16600 lm	<b>BU</b> blue	*consult factory
		<b>HX</b> 19400 lm	<b>BZ</b> bronze	
		<b>CL</b> xxxx lm <small>custom lumens consult factory</small>	<b>CP</b> champagne	
<b>C5548</b> (4ft) 48"dia X 7"ht	<b>30</b> 3000K	<b>FX</b> 7700 lm	<b>FB</b> flat black	
	<b>35</b> 3500K	<b>LO</b> 15300 lm	<b>GM</b> gun metal	
	<b>40</b> 4000K	<b>HI</b> 25000 lm	<b>MB</b> military blue	
		<b>HX</b> 29100 lm	<b>MW</b> matte white	
		<b>CL</b> xxxx lm <small>custom lumens consult factory</small>	<b>OR</b> orange	
		<b>RD</b> red		
		<b>SB</b> satin black		
		<b>SS</b> satin silver		
		<b>TG</b> textured gray		
		<b>YO</b> yellow		

**premium finish**

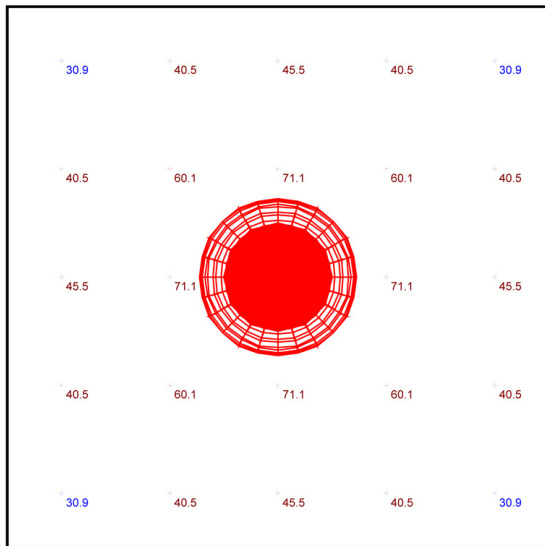
**RAL** specify RAL#





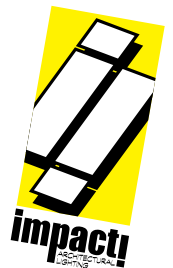
performance

Statistics						
Description	Symbol	Avg	Min	Max/Min	Avg/Min	Max
ceiling waf.r	+	49.6 fc	30.9 fc	2.8:1	1.6:1	86.1 fc



Plan View  
Scale - 1" = 4ft

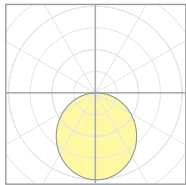
- 20' x 20' x 14'H space
- 80/50/20 reflectances
- ceiling mounted at 14' aff
- FC readings at 2.5' aff
- layout conducted using C5548 HX lumen package (29100 delivered lumens)



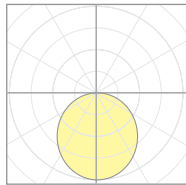
# Calculation Table

The application of a Light Loss Factor is required to:

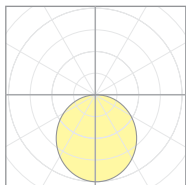
- match the lumen output for the power module specified
- incorporate the increased lumen output due to LED/Driver upgrades



18682  
P5526



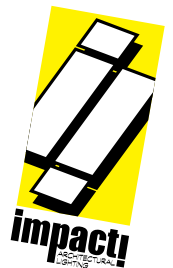
11208  
P5538



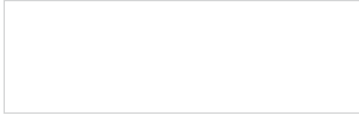
18693  
P5548

Cat No	Delivered* Lumens	Watts 120V / 277V	IES File #	LLF to be applied
C5518 FX	1300	15	20153 direct	.38
			20152 10UP	.35
C5518 LO	2550	29	20153 direct	.74
			20152 10UP	.69
C5518 HI	4100	48	20153 direct	1.19
			20152 10UP	1.11
C5526 FX	2600	30	18681 direct	.61
			18685 10UP	.38
C5526 LO	5100	59	18681 direct	1.20
			18685 10UP	.75
C5526 HI	8300	96	18681 direct	1.25
			18685 10UP	1.21
C5526 HX	9700	112	18681 direct	1.46
			18685 10UP	1.42
C5538 FX	5150	59	18686 direct	.77
			18689 10UP	.70
C5538 LO	10200	118	18686 direct	1.53
			18688 10UP	1.40
C5538 HI	16600	192	11208 direct	1.20
			18689 10UP	1.40
C5538 HX	19400	224	11208 direct	1.40
			18689 10UP	1.63
C5548 FX	7700	89	18692 direct	.86
			19172 10UP	.45
C5548 LO	15300	177	18692 direct	1.70
			19172 10UP	.88
C5548 HI	25000	288	18693 direct	1.69
			19172 10UP	1.45
C5548 HX	29100	336	18693 direct	1.96
			19172 10UP	1.68

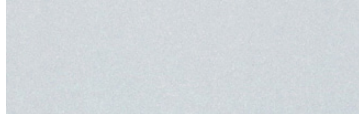
\*delivered lumens based on 4000K, 90+ cri



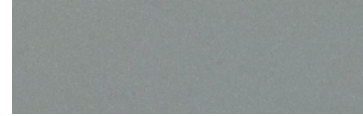
## Powder Coat Paint Finishes



**MW** matte white



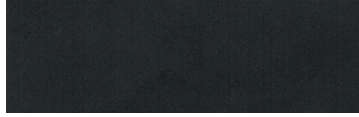
**AP** anodized paint



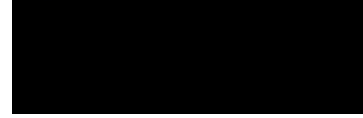
**SS** satin silver



**TG** textured gray



**FB** flat black



**SB** satin black



**CP** champagne



**BZ** bronze



**GM** gun metal



**OR** orange 2011



**BU** blue 5017



**BS** brass



**RD** red 3020



**YO** yellow 1018



**MB** military blue

For accurate color verification, actual finish samples are available upon request.

## Premium Finishes\*



**RAL#**

\*Available on select series. Consult product submittal for availability.

