

job name:
 type:

wāf.r™ ceiling spec sheet

material

trim ring

precision CNC spun .063" aluminum. rolled bottom edge for added strength.

diffuser

.187" virgin matte white acrylic lens held in place with allen key set screws recessed into trim ring.

optics

reflector

.050" aluminum array platform painted high reflectance (>92%) matte white powder coat.

LED

custom LED board in 3000K, 3500K, or 4000K (80+ cri standard) optional 90cri (see below). under normal operating conditions, the LEDs employed are rated for >50,000hrs L70 (6.8K) per IES TM-21 from LM-80 test data. white power cord is standard with other color options listed below.

driver

integral, programmable, UL class P, class 2, universal input (120-277v), constant current, 0-10v dimming, 1% minimum dimming level, PF >.9, THD <20%, protections include open and short circuit, overload and over temperature.

mounting

designed to mount to 4 inch octagon junction box (by other). consult factory for installation instructions.

emergency

recommend use of inverter (by other).



catalog number

--	--	--	--

size

C5518
18"dia X 3"ht

C5526
(2ft) 26"dia X 5"ht

C5538
(3ft) 38"dia X 6"ht

C5548
(4ft) 48"dia X 7"ht

LED array

30FX 3000K
30LO 3000K
30HI 3000K
35FX 3500K
35LO 3500K
35HI 3500K
40FX 4000K
40LO 4000K
40HI 4000K
CL xxxx lm
custom lumens
consult factory

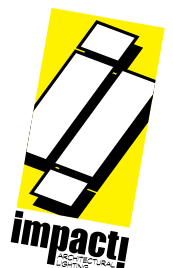
finish

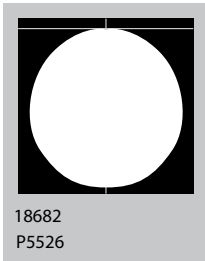
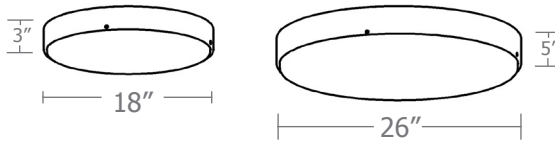
AP anodized paint
BN brown
BR brick red
BS brass
BU blue
BZ bronze
CP champagne
FB flat black
GM gun metal
GR green
MB military blue
MN mint
MW matte white
OR orange
PL purple
RD red
SB satin black
SS satin silver
TG textured gray
TW textured white
YO yellow

options
90CRI

premium finish

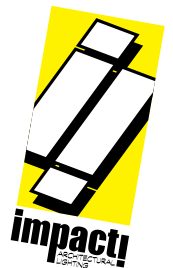
BA brushed aluminum
RAL specify RAL#

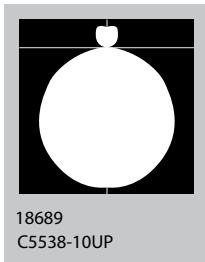
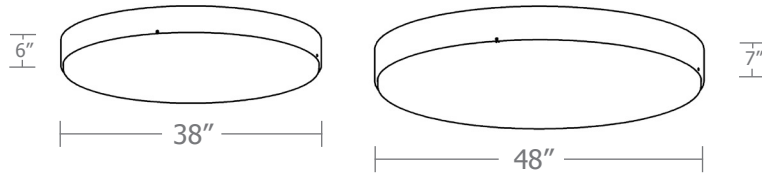




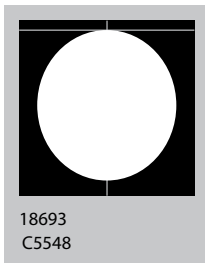
Cat No	Delivered* Lumens	Watts		Amps	
		120V / 277V	120V	277V	
C5518 FX	1170	14	.12	.05	
C5518 LO	2070	25	.21	.09	
C5518 HI	3500	42	.35	.15	
		ies file # 20153			
C5526 FX	2340	28	.23	.10	
C5526 LO	4680	57	.48	.21	
		ies file # 18681			
C5526 HI	7020	85	.71	.31	
		ies file # 18682			

*delivered lumens based on 4000K, 80+ cri
(90cri multiplier .83)





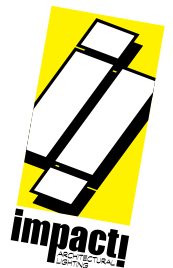
*consult factory for information on indirect lumens



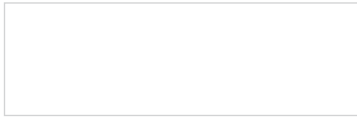
Cat No Delivered* **Watts** **Amps**
Lumens 120V / 277V 120V 277V

Cat No	Delivered* Lumens	Watts 120V / 277V	Amps 120V	Amps 277V
C5538 FX	4180	50	.42	.18
C5538 LO	8360	101	.84	.36
	ies file # 18686			
C5538 HI	13370	162	1.35	.58
	ies file # 18687			
C5548 FX	5675	69	.58	.25
C5548 LO	11370	137	1.14	.49
	ies file # 18692			
C5548 HI	19120	230	1.92	.83
	ies file # 18693			

*delivered lumens based on 4000K, 80+ cri
(90cri multiplier .83)



Powder Coat Paint Finishes



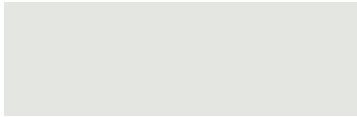
MW matte white



CP champagne



YO yellow 1018



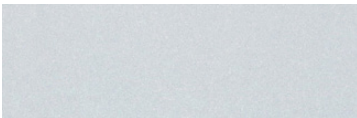
TW textured white



BZ bronze



RD red 3020



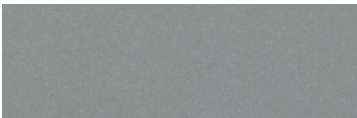
AP anodized paint



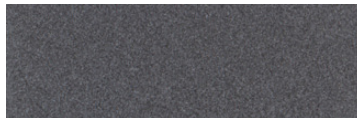
BS brass



BU blue 5017



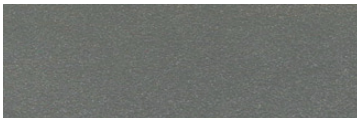
SS satin silver



GM gun metal



OR orange 2011



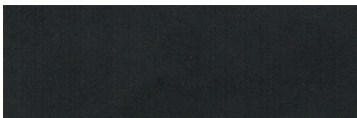
TG textured gray



BR brick red



MN mint 6019



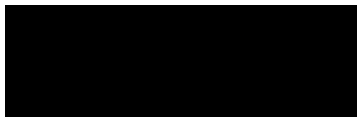
FB flat black



BN brown 8023



GR green 6018



SB satin black



MB military blue



PL purple 4005

For accurate color verification, actual finish samples are available upon request.

Premium Finishes*



BA brushed aluminum



RAL#

*Available on select series. Consult product submittal for availability.

