

job name:
 type:

18"/26" wāf.r™ ceiling spec sheet 90CRI

material

trim ring

precision CNC spun .063" aluminum. rolled bottom edge for added strength.

diffuser

.177" non-glare light matte high transmission acrylic drop lens held in place with allen key set screws recessed into trim ring.

optics

reflector

.050" aluminum array platform painted high reflectance (>92%) matte white powder coat provides 100% downlight. for uplight, specify under options.

LED

custom LED board in 3000K, 3500K, or 4000K 90+ cri standard. under normal operating conditions, the LEDs employed are rated for >50,000hrs L70 (6.8K) per IES TM-21 from LM-80 test data.

driver

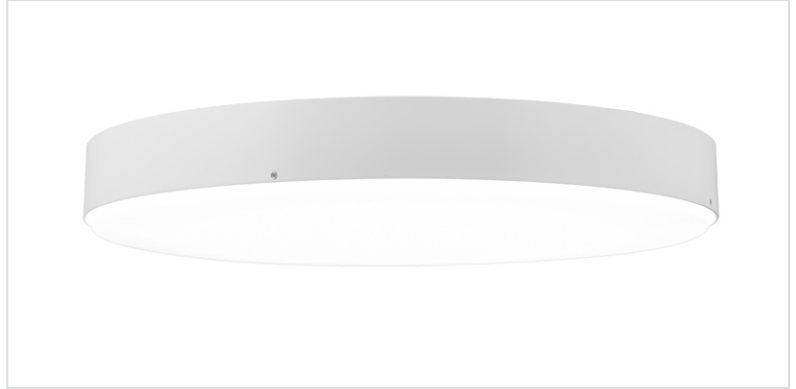
integral, programmable, UL class P, class 2, universal input (120-277v), constant current, 0-10v dimming, 1% minimum dimming level, PF >.9, THD <20%, protections include open and short circuit, overload and over temperature.

mounting

18" designed to mount to 4 inch octagon junction box (by other). 26" utilizes a custom mounting ring assembly designed to draw trim ring tight to the ceiling. consult factory for installation instructions.

emergency

recommend use of inverter (by other). optional WREM: wired for remote EM battery (by other).



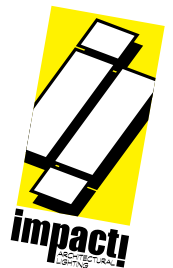
catalog number

--	--	--	--	--

size	CCT	lumens	painted finish	options
C5518 18" dia X 3" ht	30 3000K	FX 1300 lm	AP anodized paint	ELD EldoLED*
	35 3500K	LO 2550 lm	BS brass	LUT Lutron*
	40 4000K	HI 4100 lm	BU blue	*consult factory
		CL xxxx lm custom lumens consult factory	BZ bronze	
C5526 (2ft) 26" dia X 5" ht <small>See p.2 for info on P5538 & P5548</small>	30 3000K	FX 2600 lm	CP champagne	
	35 3500K	LO 5100 lm	FB flat black	
	40 4000K	HI 8300 lm	GM gun metal	
		HX 9700 lm	MB military blue	
		CL xxxx lm custom lumens consult factory	MW matte white	
			OR orange	
		RD red		
		SB satin black		
		SS satin silver		
		TG textured gray		
		YO yellow		

premium finish

RAL specify RAL#



job name:
 type:

38"/48" wāf.r™ ceiling spec sheet 90CRI

material

trim ring

precision CNC spun .063" aluminum. rolled bottom edge for added strength.

diffuser

.177" non-glare light matte high transmission acrylic drop lens held in place with allen key set screws recessed into trim ring.

optics

reflector

.050" aluminum array platform painted high reflectance (>92%) matte white powder coat provides 100% downlight. for uplight, specify under options.

LED

custom LED board in 3000K, 3500K, or 4000K 90+ cri standard. under normal operating conditions, the LEDs employed are rated for >50,000hrs L70 (6.8K) per IES TM-21 from LM-80 test data.

driver

integral, programmable, UL class P, class 2, universal input (120-277v), constant current, 0-10v dimming, 1% minimum dimming level, PF >.9, THD <20%, protections include open and short circuit, overload and over temperature.

mounting

utilizes a custom mounting ring assembly designed to draw trim ring tight to the ceiling. consult factory for installation instructions.

emergency

recommend use of inverter (by other). optional WREM: wired for remote EM battery (by other).



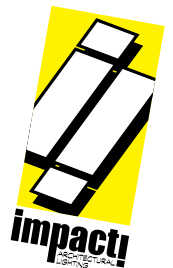
catalog number

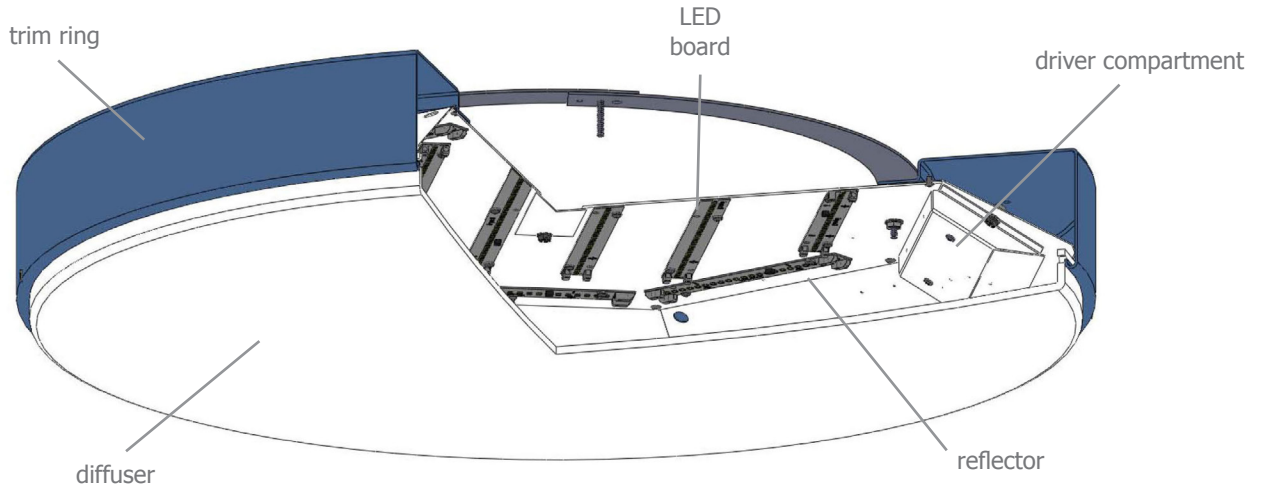
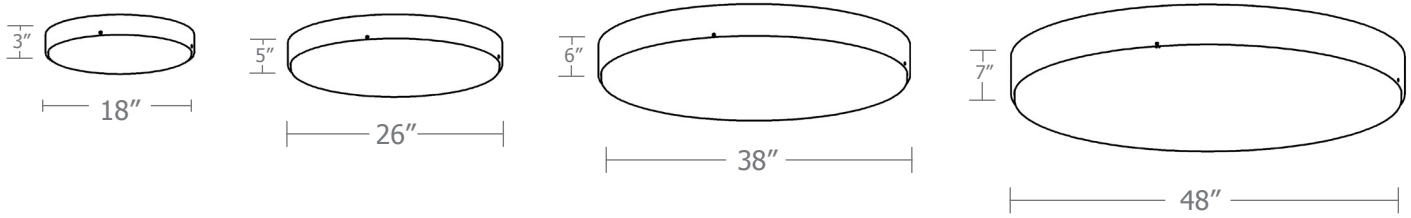
--	--	--	--	--

size	CCT	lumens	painted finish	options	
C5538 (3ft) 38"dia X 6"ht	30 3000K	FX 5150 lm	AP anodized paint	ELD EldoLED*	
	35 3500K	LO 10200 lm	BS brass	LUT Lutron*	
	40 4000K	HI 16600 lm	BU blue	*consult factory	
		HX 19400 lm	BZ bronze		
		CL xxxx lm <small>custom lumens consult factory</small>	CP champagne		
		30 3000K	FX 7700 lm	FB flat black	
		35 3500K	LO 15300 lm	GM gun metal	
C5548 (4ft) 48"dia X 7"ht	40 4000K	HI 25000 lm	MB military blue		
		HX 29100 lm	MW matte white		
		CL xxxx lm <small>custom lumens consult factory</small>	OR orange		
			RD red		
			SB satin black		
			SS satin silver		
			TG textured gray		
		YO yellow			

premium finish

RAL specify RAL#



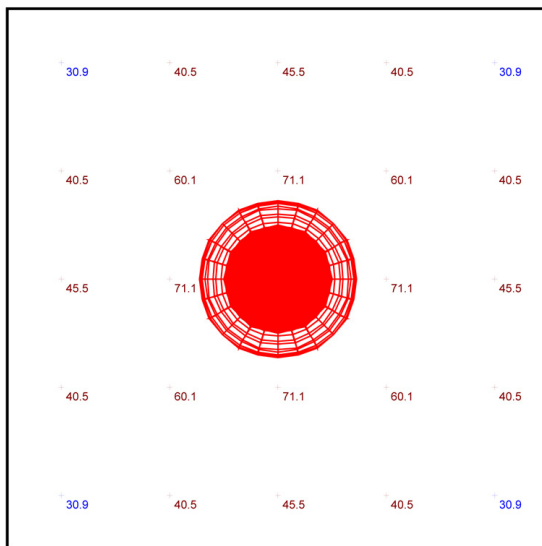


Typical Lighting Layout

performance

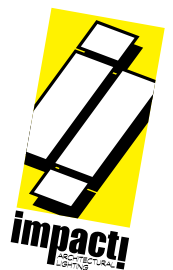
Statistics

Description	Symbol	Avg	Min	Max/Min	Avg/Min	Max
ceiling waf.r	+	49.6 fc	30.9 fc	2.8:1	1.6:1	86.1 fc



Plan View
Scale - 1" = 4ft

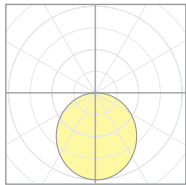
- 20' x 20' x 14'H space
- 80/50/20 reflectances
- ceiling mounted at 14' aff
- FC readings at 2.5' aff
- layout conducted using C5548 HX lumen package (29100 delivered lumens)



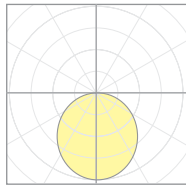
Calculation Table

The application of a Light Loss Factor is required to:

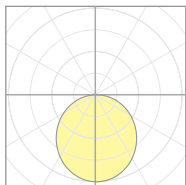
- match the lumen output for the power module specified
- incorporate the increased lumen output due to LED/Driver upgrades



18682
P5526



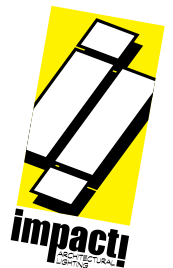
11208
P5538



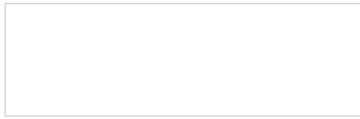
18693
P5548

Cat No	Delivered* Lumens	Watts 120V / 277V	IES File #	LLF to be applied
C5518 FX	1300	15	20153 direct	.38
C5518 LO	2550	29	20153 direct	.74
C5518 HI	4100	48	20153 direct	1.19
C5526 FX	2600	30	18681 direct	.61
C5526 LO	5100	59	18681 direct	1.20
C5526 HI	8300	96	18682 direct	1.25
C5526 HX	9700	112	18682 direct	1.46
C5538 FX	5150	59	18686 direct	.77
C5538 LO	10200	118	18686 direct	1.53
C5538 HI	16600	192	11208 direct	1.20
C5538 HX	19400	224	11208 direct	1.40
C5548 FX	7700	89	18692 direct	.86
C5548 LO	15300	177	18692 direct	1.70
C5548 HI	25000	288	18693 direct	1.69
C5548 HX	29100	336	18693 direct	1.96

*delivered lumens based on 4000K, 90+ cri



Powder Coat Paint Finishes



MW matte white



AP anodized paint



SS satin silver



TG textured gray



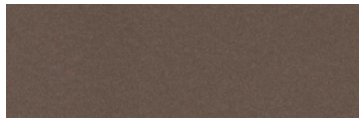
FB flat black



SB satin black



CP champagne



BZ bronze



GM gun metal



OR orange 2011



BU blue 5017



BS brass



RD red 3020



YO yellow 1018



MB military blue

For accurate color verification, actual finish samples are available upon request.

Premium Finishes*



RAL#

*Available on select series. Consult product submittal for availability.

