

job name:
 type:

26" wht.wal™ spec sheet 90CRI

material

trim ring
 precision CNC spun .063" aluminum. rolled bottom edge for added strength.

diffuser
 .125" virgin white acrylic bottom/inner lens.

optics

reflector
 .050" aluminum array platform powder coat painted high reflectance (>92%) matte white.

LED

custom LED board in 3000K, 3500K, or 4000K (90+ cri standard) under normal operating conditions, the LEDs employed are rated for >50,000hrs L70 (6.8K) per IES TM-21 from LM-80 test data. select power cord color below.

driver

integral, programmable, UL class P, class 2, universal input (120-277v), constant current, 0-10v dimming, 1% minimum dimming level, PF >.9, THD <20%, protections include open and short circuit, overload and over temperature.

mounting

5"dia. spun steel canopy in satin white. four point vertical suspension of stainless steel cables attach to trim with field adjustable grippers that allow for exact AFF mounting heights. optional quadpod to single point cable suspension, with sloped ceiling adapter. select cable length under options.

emergency

recommend use of inverter (by other)
 optional WREM: wired for remote EM battery (by other). 2nd power cord required.



catalog number

P6326					
-------	--	--	--	--	--

size	CCT	lumens	painting finish	power cord	options
P6326 (2ft) 26"dia X 4"ht <small>see page 2 & 3 for info on P6338 and P6348</small>	30 3000K 35 3500K 40 4000K	LO 2620 lm HI 4890 lm CL xxxx lm <small>custom lumens consult factory (1310 lm - 4890 lm)</small>	AP anodized paint BS brass BU blue BZ bronze CP champagne FB flat black GM gun metal MB military blue MW matte white OR orange RD red SB satin black SS satin silver TG textured gray YO yellow	WHPC white power cord and canopy BKPC black power cord and canopy SBPC silver braid power cord and white canopy	6FT 72" cables 12FT 144" cables QPD Quadpod hanging system <small>choose suspension length above when selecting -QPD</small> WREM wired for remote EM battery pack <small>(by other) (see note above)</small> ELD EldoLED* LUT Lutron* <small>*consult factory</small>

premium finish
RAL specify RAL#



job name:
 type:

38" wht.wal™ spec sheet 90CRI

material

trim ring

precision CNC spun .063" aluminum. rolled bottom edge for added strength.

diffuser

.125" virgin white acrylic bottom/inner lens.

optics

reflector

.050" aluminum array platform powder coat painted high reflectance (>92%) matte white.

LED

custom LED board in 3000K, 3500K, or 4000K (90+ cri standard) under normal operating conditions, the LEDs employed are rated for >50,000hrs L70 (6.8K) per IES TM-21 from LM-80 test data. select power cord color below.

driver

integral, programmable, UL class P, class 2, universal input (120-277v), constant current, 0-10v dimming, 1% minimum dimming level, PF >.9, THD <20%, protections include open and short circuit, overload and over temperature.

mounting

5"dia. spun steel canopy in satin white. four point vertical suspension of stainless steel cables attach to trim with field adjustable grippers that allow for exact AFF mounting heights. optional quadpod to single point cable suspension, with sloped ceiling adapter. select cable length under options.

emergency

recommend use of inverter (by other)
 optional WREM: wired for remote EM battery (by other). 2nd power cord required.



catalog number

P6338					
-------	--	--	--	--	--

size	CCT	lumens	painting finish	power cord	options
P6338 (3ft) 38"dia X 5.5"ht <small>see page 3 for info on P6348</small>	30 3000K 35 3500K 40 4000K	LO 2955 lm HI 6140 lm CL xxxx lm <small>custom lumens consult factory (1750 lm - 6140 lm)</small>	AP anodized paint BS brass BU blue BZ bronze CP champagne FB flat black GM gun metal MB military blue MW matte white OR orange RD red SB satin black SS satin silver TG textured gray YO yellow premium finish RAL specify RAL#	WHPC white power cord and canopy BKPC black power cord and canopy SBPC silver braid power cord and white canopy	6FT 72" cables 12FT 144" cables QPD Quadpod hanging system <small>choose suspension length above when selecting -QPD</small> WREM wired for remote EM battery pack <small>(by other) (see note above)</small> ELD EldoLED* LUT Lutron* <small>*consult factory</small>



job name:
 type:

48" wht.wal™ spec sheet 90CRI

material

trim ring
 precision CNC spun .063" aluminum. rolled bottom edge for added strength.
diffuser
 .125" virgin white acrylic bottom/inner lens.

optics

reflector
 .050" aluminum array platform powder coat painted high reflectance (>92%) matte white.

LED

custom LED board in 3000K, 3500K, or 4000K (90+ cri standard) under normal operating conditions, the LEDs employed are rated for >50,000hrs L70 (6.8K) per IES TM-21 from LM-80 test data. select power cord color below.

driver

integral, programmable, UL class P, class 2, universal input (120-277v), constant current, 0-10v dimming, 1% minimum dimming level, PF > .9, THD <20%, protections include open and short circuit, overload and over temperature.

mounting

5"dia. spun steel canopy in satin white. four point vertical suspension of stainless steel cables attach to trim with field adjustable grippers that allow for exact AFF mounting heights. optional quadpod to single point cable suspension, with sloped ceiling adapter. select cable length under options.

emergency

recommend use of inverter (by other)
 optional WREM: wired for remote EM battery (by other). 2nd power cord required.

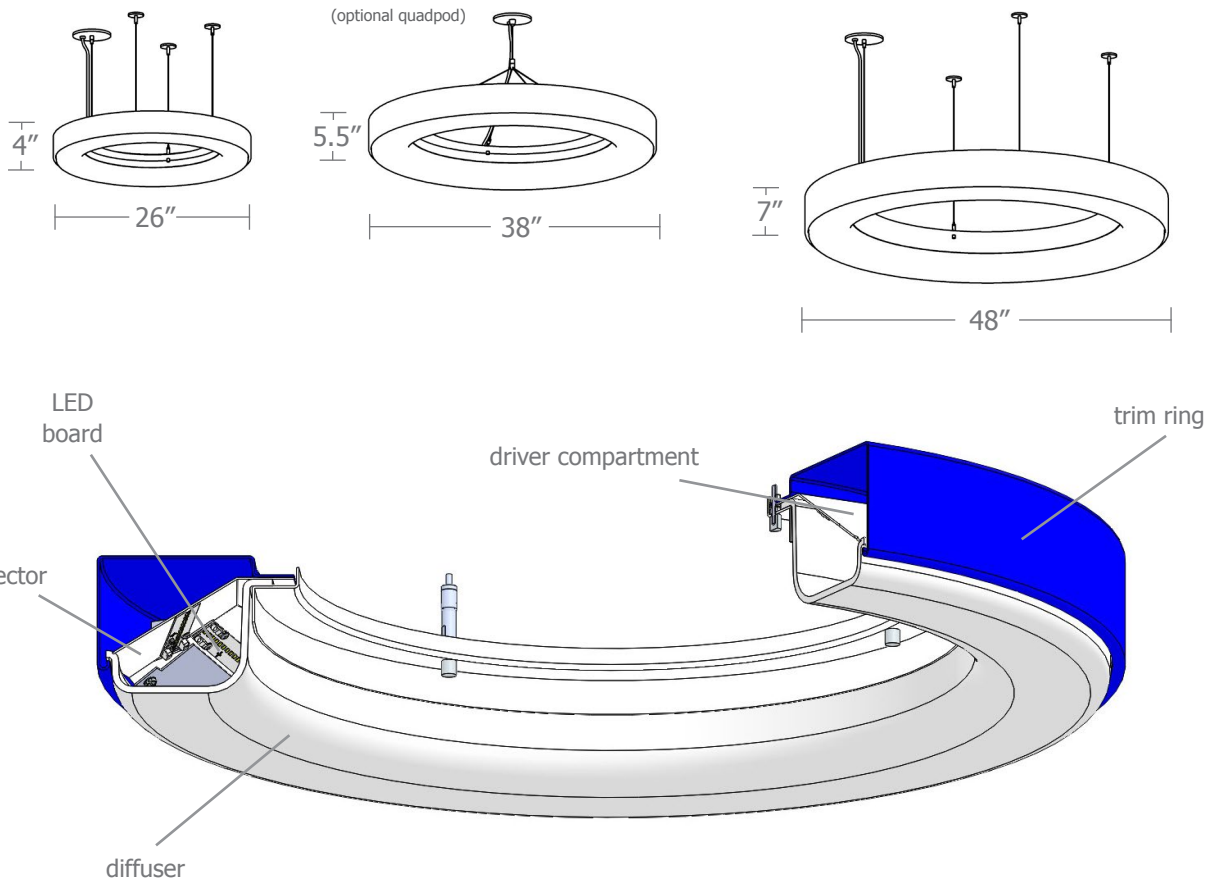


catalog number

P6348					
-------	--	--	--	--	--

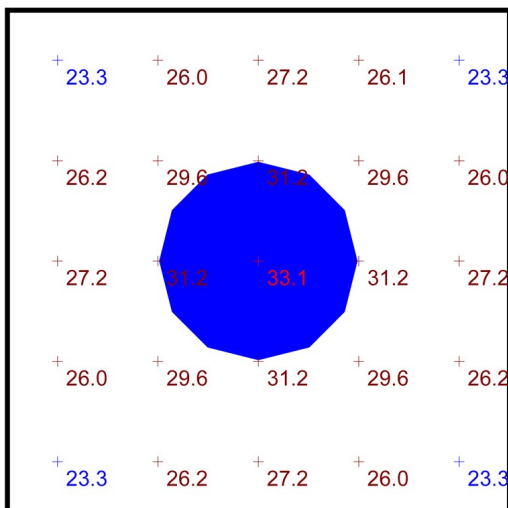
size	CCT	lumens	painting finish	power cord	options
P6348 (4ft) 48"dia X 7"ht	30 3000K 35 3500K 40 4000K	LO 5040 lm HI 8250 lm CL xxxx lm <small>custom lumens consult factory (2160 lm - 8250 lm)</small>	AP anodized paint BS brass BU blue BZ bronze CP champagne FB flat black GM gun metal MB military blue MW matte white OR orange RD red SB satin black SS satin silver TG textured gray YO yellow	WHPC white power cord and canopy BKPC black power cord and canopy SBPC silver braid power cord and white canopy	6FT 72" cables 12FT 144" cables QPD Quadpod hanging system <small>choose suspension length above when selecting -QPD</small> WREM wired for remote EM battery pack <small>(by other) (see note above)</small> ELD EldoLED* LUT Lutron* <small>*consult factory</small>
			premium finish RAL specify RAL#		





Typical Lighting Layout

Statistics						
Description	Symbol	Avg	Max	Min	Max/Min	Avg/Min
wht.wal pendant	+	27.5 fc	33.1 fc	23.3 fc	1.4:1	1.2:1



Plan View
Scale - 1" = 2ft

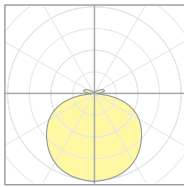
- 10' x 10' x 14'H space
- 80/50/20 reflectances
- bottom of fixture at 12' aff
- FC readings at 2.5' aff
- layout conducted using 48" dia. HI lumen package (8250 delivered lumens)



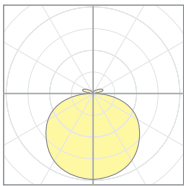
Calculation Table

The application of a Light Loss Factor is required to:

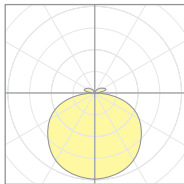
- match the lumen output for the power module specified
- incorporate the increased lumen output due to LED/Driver upgrades



19611
P6326



19185
P6338



19188
P6348

Cat No	Delivered* Lumens	Watts 120V / 277V	IES File #	LLF to be applied
P6326 LO	2620	31	19611	0.59
P6326 HI	4890	62	19611	1.10
P6338 LO	2955	36	19185	0.58
P6338 HI	6140	78	19185	1.20
P6348 LO	5040	61	19188	0.86
P6348 HI	8250	104	19188	1.40

*delivered lumens based on 4000K, 90+ cri

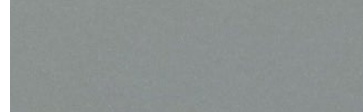
Powder Coat Paint Finishes



MW matte white



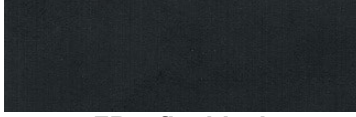
AP anodized paint



SS satin silver



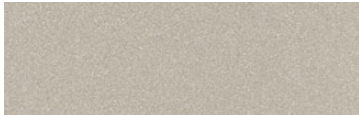
TG textured gray



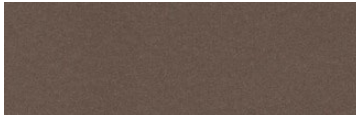
FB flat black



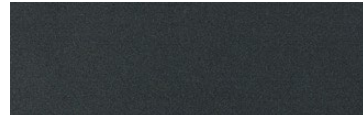
SB satin black



CP champagne



BZ bronze



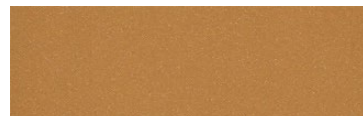
GM gun metal



OR orange 2011



BU blue 5017



BS brass



RD red 3020



YO yellow 1018



MB military blue

For accurate color verification, actual finish samples are available upon request.

Premium Finishes*



RAL#

*Available on select series. Consult product submittal for availability.