

job name:   
 type:

## wāf.r™ spec sheet

### material

#### trim ring

precision CNC spun .063" aluminum. rolled bottom edge for added strength.

#### diffuser

.187" virgin matte white acrylic drop lens held in place with allen key set screws recessed into trim ring.

### optics

#### reflector

.050" aluminum array platform painted high reflectance (>92%) matte white powder coat provides 100% downlight. for uplight, specify under options.

### LED

custom LED board in 3000K, 3500K, or 4000K (80+ cri standard) optional 90cri (see below). under normal operating conditions, the LEDs employed are rated for >50,000hrs L70 (6.8K) per IES TM-21 from LM-80 test data. white power cord is standard with other color options listed below.

### driver

integral, programmable, UL class P, class 2, universal input (120-277v), constant current, 0-10v dimming, 1% minimum dimming level, PF >.9, THD <20%, protections include open and short circuit, overload and over temperature.

### mounting

5" dia. spun steel canopy in satin white is designed to mount to a 4" octagon junction box (by other). four point vertical suspension of 12 ft long stainless steel cables attach to trim with field adjustable grippers that allow for exact AFF mounting heights. slip ring coupler allows for easy wire connections. optional quadpod to single point cable suspension.

### emergency

recommend use of inverter (by other).



## catalog number

--	--	--	--

### size

**P5518**  
18" dia X 3" ht

**P5526**  
(2ft) 26" dia X 5" ht

**P5538**  
(3ft) 38" dia X 6" ht

**P5548**  
(4ft) 48" dia X 7" ht

### LED array

**30FX** 3000K

**30LO** 3000K

**30HI** 3000K

**35FX** 3500K

**35LO** 3500K

**35HI** 3500K

**40FX** 4000K

**40LO** 4000K

**40HI** 4000K

**CL** xxxx lm  
custom lumens  
consult factory

### finish

**AP** anodized paint

**BN** brown

**BR** brick red

**BS** brass

**BU** blue

**BZ** bronze

**CP** champagne

**FB** flat black

**GM** gun metal

**GR** green

**MB** military blue

**MN** mint

**MW** matte white

**OR** orange

**PL** purple

**RD** red

**SB** satin black

**SS** satin silver

**TG** textured gray

**TW** textured white

**YO** yellow

### options

**10UP** 10% uplight

**90CRI**

**BKPC** Black power cord and canopy

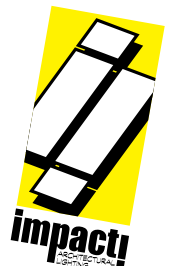
**SBPC** Silver braid power cord and white canopy

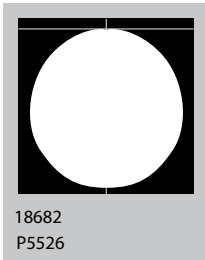
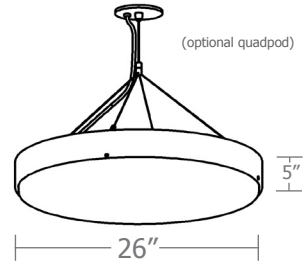
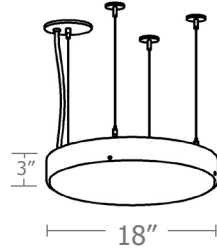
**QPD** Quadpod hanging system

### premium finish

**BA** brushed aluminum

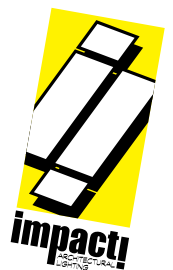
**RAL** specify RAL#

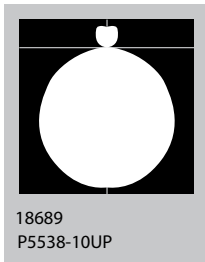
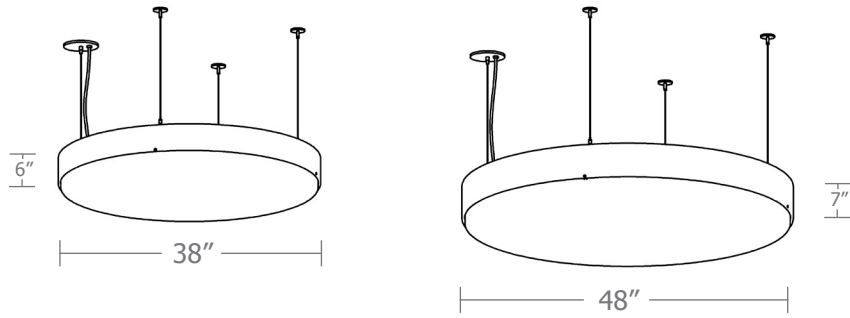




Cat No	Delivered* Lumens	Watts		Amps	
		120V / 277V	120V	277V	
<b>P5518 FX</b>	1170	14	.12	.05	
<b>P5518 LO</b>	2070	25	.21	.09	
<b>P5518 HI</b>	3500	42	.35	.15	
		ies file # 20153			
<b>P5526 FX</b>	2340	28	.23	.10	
<b>P5526 LO</b>	4680	57	.48	.21	
		ies file # 18681			
<b>P5526 HI</b>	7020	85	.71	.31	
		ies file # 18682			

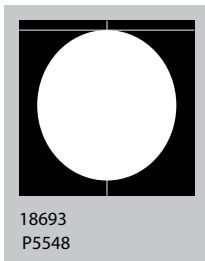
\*delivered lumens based on 4000K, 80+ cri (90cri multiplier .83)





18689  
P5538-10UP

\*consult factory for information on indirect lumens

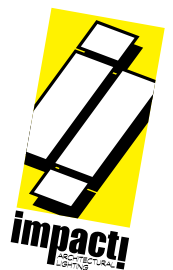


18693  
P5548

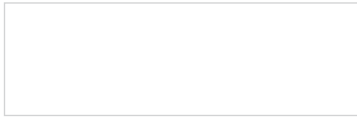
Cat No	Delivered* Lumens	Watts		Amps	
		120V / 277V	120V	277V	277V

<b>P5538 FX</b>	4180	50	.42	.18
<b>P5538 LO</b>	8360	101	.84	.36
		ies file # 18686		
<b>P5538 HI</b>	13370	162	1.35	.58
		ies file # 18687		
<b>P5548 FX</b>	5675	69	.58	.25
<b>P5548 LO</b>	11370	137	1.14	.49
		ies file # 18692		
<b>P5548 HI</b>	19120	230	1.92	.83
		ies file # 18693		

\*delivered lumens based on 4000K, 80+ cri (90cri multiplier .83)



## Powder Coat Paint Finishes



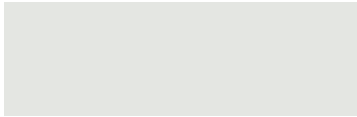
**MW** matte white



**CP** champagne



**YO** yellow 1018



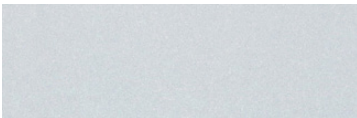
**TW** textured white



**BZ** bronze



**RD** red 3020



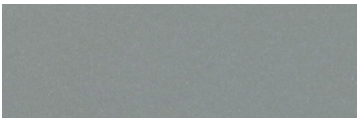
**AP** anodized paint



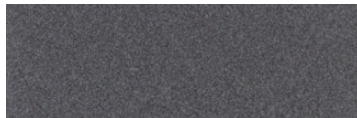
**BS** brass



**BU** blue 5017



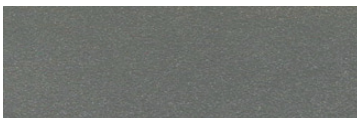
**SS** satin silver



**GM** gun metal



**OR** orange 2011



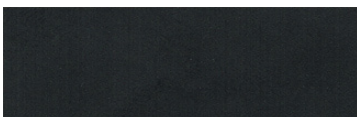
**TG** textured gray



**BR** brick red



**MN** mint 6019



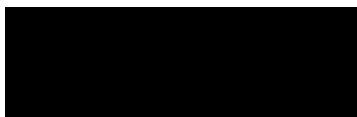
**FB** flat black



**BN** brown 8023



**GR** green 6018



**SB** satin black



**MB** military blue



**PL** purple 4005

For accurate color verification, actual finish samples are available upon request.

## Premium Finishes\*



**BA** brushed aluminum



**RAL#**

\*Available on select series. Consult product submittal for availability.

