

job name:   
 type:

# kupola™ spec sheet 90CRI

**material**

**housing**  
 spun .064" aluminum housing available in two-tone powder coat paint finishes listed below.

**diffuser**  
 .125" Satinice WD855 light scattering, glare reduction acrylic. Colorless diffusion reduces CCT shift. 72% high light transmission. snaps in place with hidden hardware.

**LED**  
 custom LED board in 3000K, 3500K, or 4000K (90+ cri standard). LEDs are rated >50,000 hours L70 (10K) at 85°C per LM-80 test data, and 70,000 hours projected life per IES TM-21. power cord color options listed below.

**driver**  
 in canopy, constant current, class P, class 2 power unit, class A sound rating, universal input (120-277V) programmable driver, 1% minimum dimming level, PF >0.90. protections include short circuit, input/output isolation and surge protection (3KV). wired for 0-10v dimming.

**mounting**  
 spun aluminum canopy painted to match fixture. multiple options listed below. cloth cord requires special stripping tool (link).

**finish**  
**outer**  
 select from standard powder coat paint finishes or specify RAL# for custom colors.

**inner**  
 select from brass, matte white, or satin black powder coat paint.

**emergency**  
 if required, recommend use of inverter (by other).

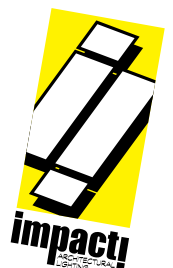


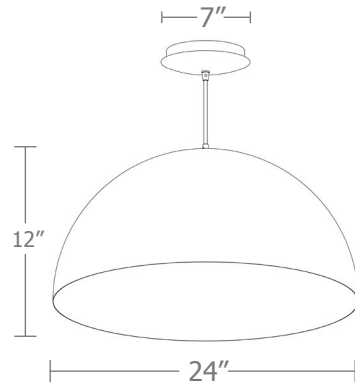
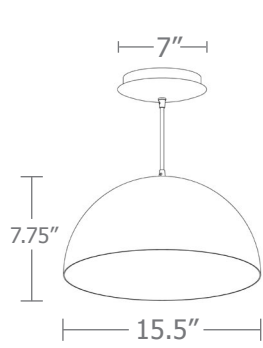
## catalog number

<input type="text"/>	<input type="text"/>	<input type="text"/>	<input type="text"/>	<input type="text"/>	<input type="text"/>	<input type="text"/>
----------------------	----------------------	----------------------	----------------------	----------------------	----------------------	----------------------

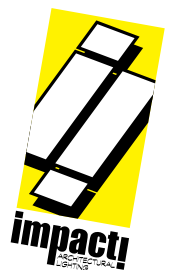
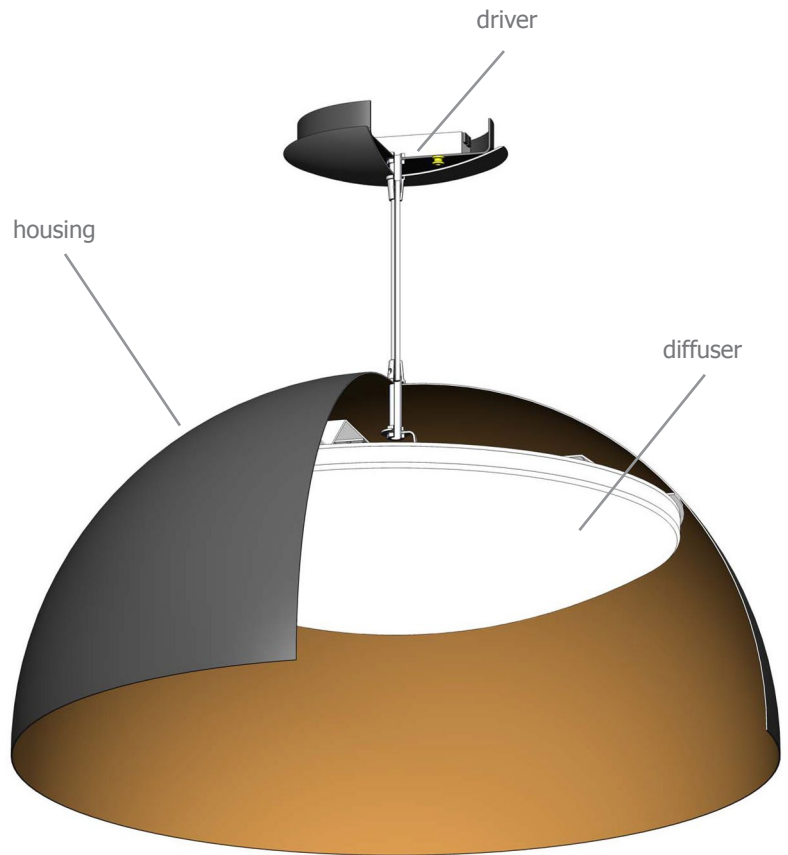
size	CCT	lumens	outer finish	inner finish	power cord	options
<b>P1616</b> 15.5"dia X 7.75"ht	<b>30</b> 3000K	<b>LO</b> 1590 lm	<b>AP</b> anodized paint	<b>BS</b> brass	<b>BUPC</b> blue cloth cord	<b>3FT</b> 36" cord
	<b>35</b> 3500K	<b>HI</b> 3175 lm	<b>BS</b> brass	<b>MW</b> matte white	<b>ORPC</b> orange cloth cord	<b>6FT</b> 72" cord
	<b>40</b> 4000K		<b>BU</b> blue	<b>SB</b> satin black <small>*consult factory for other options</small>	<b>PLPC</b> purple cloth cord	<b>12FT</b> 144" cord
<b>P1624</b> 24"dia X 12"ht	<b>30</b> 3000K <b>35</b> 3500K <b>40</b> 4000K	<b>LO</b> 2125 lm <b>HI</b> 4450 lm	<b>BZ</b> bronze		<b>RDPC</b> red cloth cord	
			<b>CP</b> champagne		<b>WGPC</b> white & gray dot cloth cord	
			<b>FB</b> flat black		<b>WHPC</b> white power cord and canopy	
			<b>GM</b> gun metal		<b>BKPC</b> black power cord and canopy	
			<b>MB</b> military blue			
			<b>MW</b> matte white			
			<b>OR</b> orange			
			<b>RD</b> red			
			<b>SB</b> satin black			
			<b>SS</b> satin silver			
<b>TG</b> textured gray						
<b>YO</b> yellow						

**premium finish**  
**RAL** specify RAL#





colored cloth cord



## Calculation Table

The application of a Light Loss Factor is required to:

- match the lumen output for the power module specified
- incorporate the increased lumen output due to LED/Driver upgrades

Cat No	Delivered* Lumens	Watts 120V / 277V	IES File	LLF to be applied
<b>P1616 LO</b>	1590	17	<b>L092311801</b>	.50
<b>P1616 HI</b>	3175	35	<b>L092311801</b>	1.00
<b>P1624 LO</b>	2125	22	<b>L092311803</b>	.48
<b>P1624 HI</b>	4450	46	<b>L092311803</b>	1.00

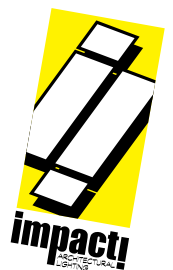
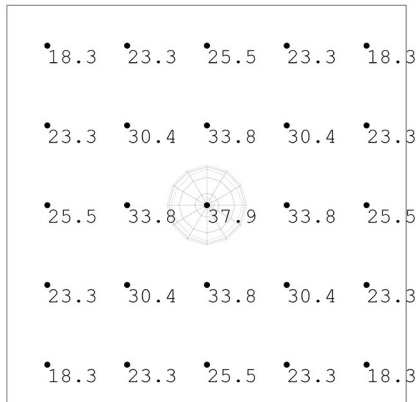
\* delivered lumens based on 4000K, 90+ cri, matte white inner finish.  
 for brass inner finish use .75 multiplier.  
 for satin black inner finish use .72 multiplier.

## Typical Lighting Layout

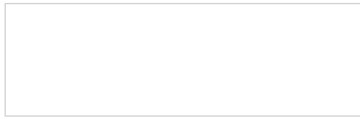
Schedule					
Quantity	Manufacturer	Catalog Number	Description	Lamp	Wattage
1	Impact Architectural Lighting	P1624 40HI	24" dia. pendant kupola	4000k 90cri LED	46

- 10' x 10' x 12'H space
- 80/50/20 reflectances
- fixture at 10' aff
- FC readings at 2.5' aff
- layout conducted using P1624 HI lumen 90 CRI package providing 4450 delivered lumens

Statistics						
Description	Symbol	Avg	Max	Min	Max/Min	Avg/Min
kupola	+	26.25fc	37.9 fc	18.3 fc	2.1	1.4:1



## Powder Coat Paint Finishes



**MW** matte white



**AP** anodized paint



**SS** satin silver



**TG** textured gray



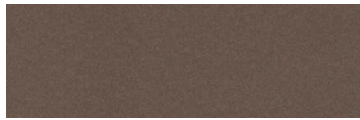
**FB** flat black



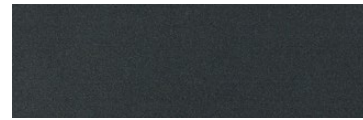
**SB** satin black



**CP** champagne



**BZ** bronze



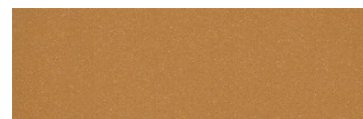
**GM** gun metal



**OR** orange 2011



**BU** blue 5017



**BS** brass



**RD** red 3020



**YO** yellow 1018



**MB** military blue

For accurate color verification, actual finish samples are available upon request.

## Premium Finishes\*



**RAL#**

\*Available on select series. Consult product submittal for availability.

