

job name:
 type:

sq.too™ ceiling spec sheet 90CRI

material

2" smooth square extruded architectural 6063 aluminum outer housing in six lengths.

LED

COB in 2700K, 3000K, 3500K, or 4000K 90+ cri standard rated >36,000 hours L70 (6.8K) per LM-80 test data, and 71,000 hours projected life per IES TM-21.

downlight optics

Khatod® Cosmo 50mm dia 16mm high (RoHS compliant) available in 12° spot, 25° medium, 38° wide

driver

constant current, class P, class 2 power unit, class A sound rating, universal input (120-277V) programmable driver, 5% minimum dimming level, PF >0.90. protections include short circuit, input/output isolation and surge protection (3KV). wired for 0-10v dimming from factory.

mounting

standard

driver in junction box (requires 2 1/8" deep electrical box). 5"sq canopy painted to match fixture. satin black canopy standard on wood finishes.

remote enclosure (.LV) (optional)

the standard driver can be remote mounted up to 33ft from the LED. suspension length should be considered in distance. remote enclosure supplied. for distances greater than 33ft consult factory. for Chicago Plenum installation consult factory.

finish

select from 15 standard powder coat paint finishes or 3 wood finishes (listed below) or specify RAL# for custom colors..

emergency

if required, recommend use of inverter (by other).



catalog number

--	--	--	--	--

size

C4006 driver in j-box
C4006.LV remote enclosure
 2"sq X 6.25"ht

C4012 driver in j-box
C4012.LV remote enclosure
 2"sq X 12.25"ht

C4018 driver in j-box
C4018.LV remote enclosure
 2"sq X 18.25"ht

C4024 driver in j-box
C4024.LV remote enclosure
 2"sq X 24.25"ht

C4036* driver in j-box
C4036.LV* remote enclosure
 2"sq X 36.25"ht

C4048* driver in j-box
C4048.LV* remote enclosure
 2"sq X 48.25"ht

*extended lead time

beam

S 12° spot
M 25° med
W 38° wide

CCT

27 2700K
30 3000K
35 3500K
40 4000K

lumens

L1 360 lm
L2 630 lm
L3 900 lm
H1 1265 lm
H2 1805 lm

painted finish

AP anodized paint
BS brass
BU blue
BZ bronze
CP champagne
FB flat black
GM gun metal
MB military blue
MW matte white
OR orange
RD red
SB satin black
SS satin silver
TG textured gray
YO yellow

premium finish

RAL specify RAL#

wood finish

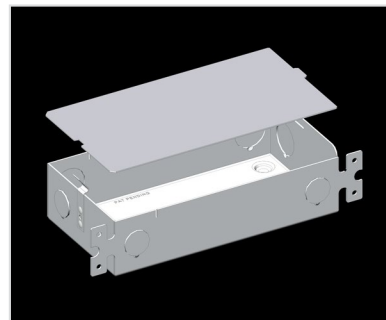
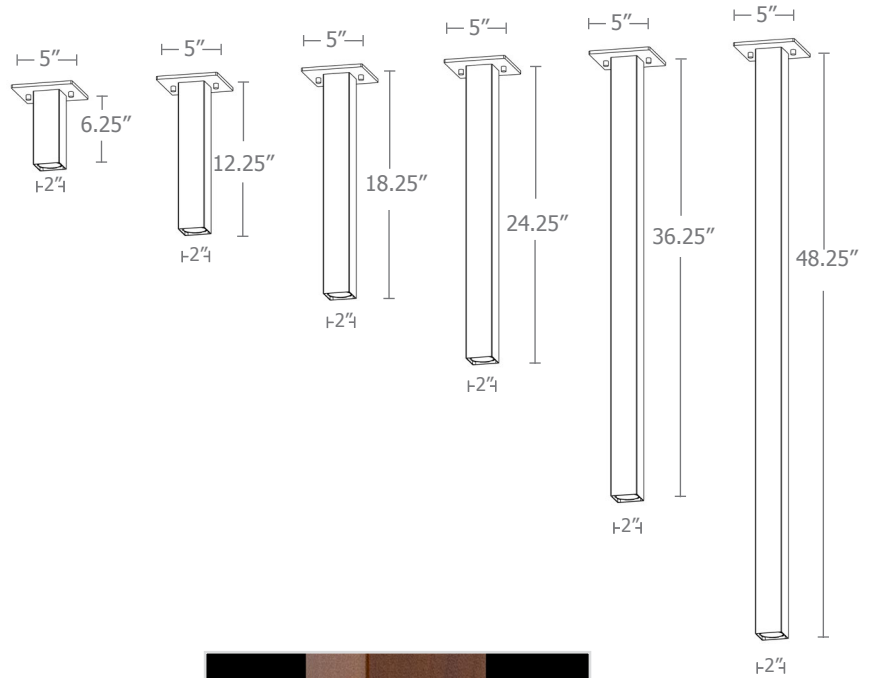
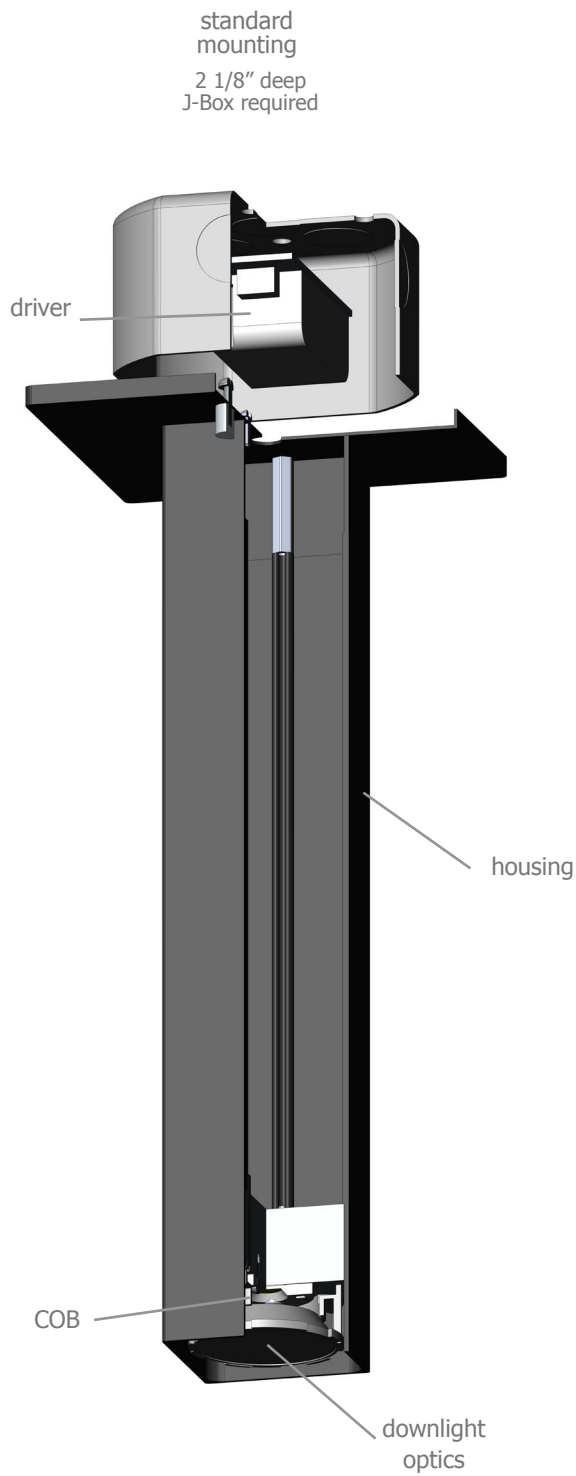
ASH ashwood
ENG english brown oak
ESP espresso



remote enclosure



made in the
usa!



Calculation Table

Consult factory for applications assistance

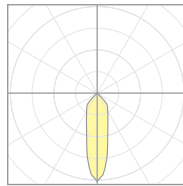


Cat No	Delivered* Lumens	Watts 120V / 277V	IES File #	LLF to be applied
L1	360	3	07222C spot	.30
			07222B med	.30
			07222A wide	.30
L2	630	6	07222C spot	.53
			07222B med	.53
			07222A wide	.53
L3	900	9	07222C spot	.76
			07222B med	.76
			07222A wide	.76
H1	1265	13	07222C spot	1.07
			07222B med	1.07
			07222A wide	1.07
H2	1805	19	07222C spot	1.52
			07222B med	1.52
			07222A wide	1.52

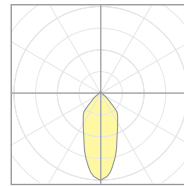
*delivered lumens based on 4000K, 90+ cri

The application of a Light Loss Factor is required to:

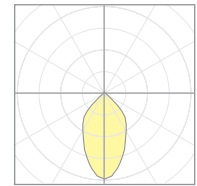
- match the lumen output for the power module specified
- incorporate the increased lumen output due to LED/Driver upgrades



07222C
P40xx-S-40H1
S 12° spot

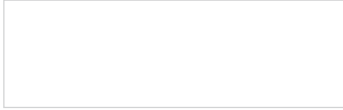


07222B
P40xx-M-40H1
M 25° med

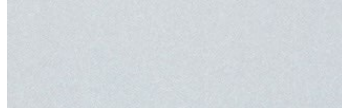


07222A
P40xx-W-40H1
W 38° wide

Powder Coat Paint Finishes



MW matte white



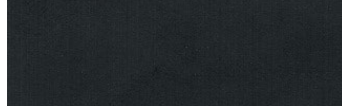
AP anodized paint



SS satin silver



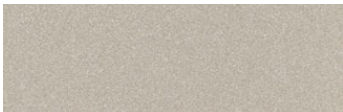
TG textured gray



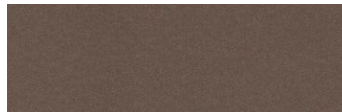
FB flat black



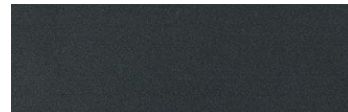
SB satin black



CP champagne



BZ bronze



GM gun metal



OR orange 2011



BU blue 5017



BS brass



RD red 3020



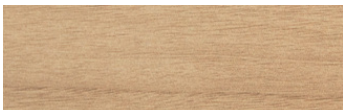
YO yellow 1018



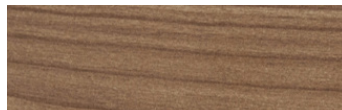
MB military blue

Premium Finishes*

Wood Finishes



ASH ashwood



ENG english brown oak



ESP espresso

For accurate color verification, actual finish samples are available upon request.



RAL#

*Available on select series. Consult product submittal for availability.

