

job name:   
 type:

## glo.stk.4.hrz™ spec sheet 90CRI

### LED

flexible planar LED lighting sheet in 3000K, 3500K, or 4000K (90+ CRI standard), utilizing emitters rated at >77,000hrs L70 per TM21-11 from LM80 data. silver braid power cord standard.

### end caps

ribbed extruded aluminum end caps available in silver anodized and black anodized finish. or choose from 12 standard painted finishes listed below.

### driver

programmable, class 2, class P universal input (120-277v), constant current, 0-10v dimming, 1% minimum dimming level, PF >.9, THD <20%, protections include open and short circuit, overload and over temperature. remote driver enclosure standard. consult factory for distances over 33 feet.

### diffuser

4" dia. .118" Satinice white acrylic cylinder, featuring light diffusion beads evenly distributed throughout the material for optimum light diffusion.

### finish

select from 2 anodized and 12 standard powder coat paint finishes listed below or specify RAL# for custom colors.

### mounting

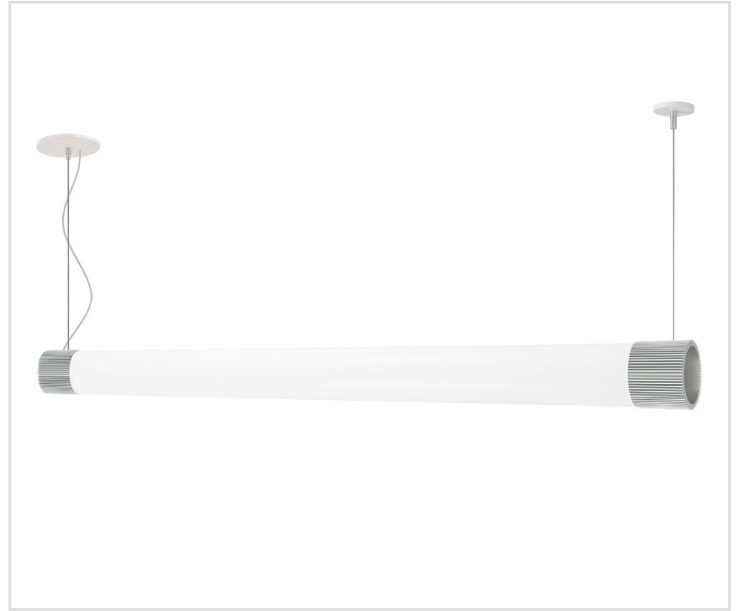
5" matte white canopy. 2 pt stainless steel cables and field adjustable grippers that allow for exact AFF mounting heights. non-powerfeed leg has 2" satin white canopy at top. silver braid power cord standard.

### CDVR (optional)

7"dia. spun .064" aluminum canopy in matte white. surface mounted driver.

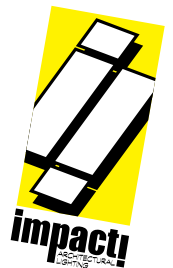
### emergency

recommend use of inverter (by other).  
 optional WREM: wired for remote EM battery (by other).



## catalog number

size	CCT	lumens	anodized finishes	options
<b>P8624.LV (2ft)</b> 4"dia X 31"long	<b>30</b> 3000K <b>35</b> 3500K <b>40</b> 4000K	<b>LO</b> 1400 lm <b>HI</b> 2150 lm <b>CL*</b> xxxx lm (940lm-3200lm) <small>custom lumens consult factory</small>	<b>AN</b> silver anodized <b>ANB</b> anodized black	<b>3FT</b> 36" cables <b>6FT</b> 72" cables <b>CDVR</b> surface-mounted driver canopy <b>WREM</b> wired for remote EM battery pack (by other) (see note above)
<b>P8636.LV (3ft)</b> 4"dia X 43"long	<b>30</b> 3000K <b>35</b> 3500K <b>40</b> 4000K	<b>LO</b> 1880 lm <b>HI</b> 3750 lm <b>CL*</b> xxxx lm (1400lm-4570lm) <small>custom lumens consult factory</small>	<b>BS</b> brass <b>BU</b> blue <b>BZ</b> bronze <b>CP</b> champagne <b>GM</b> gun metal <b>MB</b> military blue <b>MW</b> matte white <b>OR</b> orange <b>RD</b> red <b>SS</b> satin silver <b>TG</b> textured gray <b>YO</b> yellow	<b>ELD</b> EldoLED* <b>LUT</b> Lutron* <small>*consult factory</small>
			<b>premium finish</b> <b>RAL</b> specify RAL#	



job name:   
 type:

## glo.stk.4.hrz™ spec sheet 90CRI

### LED

flexible planar LED lighting sheet in 3000K, 3500K, or 4000K (90+ CRI standard), utilizing emitters rated at >77,000hrs L70 per TM21-11 from LM80 data. silver braid power cord standard.

### end caps

ribbed extruded aluminum end caps available in silver anodized and black anodized finish. or choose from 12 standard painted finishes listed below.

### driver

programmable, class 2, class P universal input (120-277v), constant current, 0-10v dimming, 1% minimum dimming level, PF >.9, THD <20%, protections include open and short circuit, overload and over temperature. remote driver enclosure standard. consult factory for distances over 33 feet.

### diffuser

4" dia. .118" Satinice white acrylic cylinder, featuring light diffusion beads evenly distributed throughout the material for optimum light diffusion.

### finish

select from 2 anodized and 12 standard powder coat paint finishes listed below or specify RAL# for custom colors.

### mounting

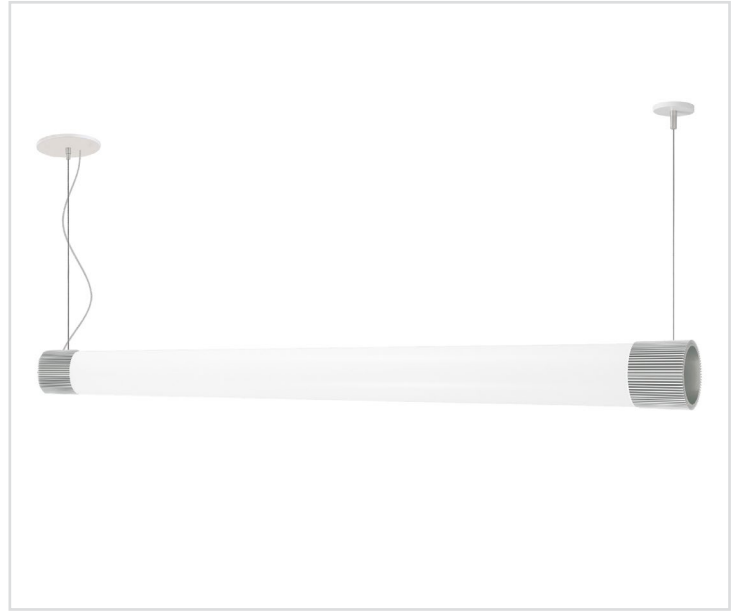
5" matte white canopy. 2 pt stainless steel cables and field adjustable grippers that allow for exact AFF mounting heights. non-powerfeed leg has 2" satin white canopy at top. silver braid power cord standard.

### CDVR (optional)

7"dia. spun .064" aluminum canopy in matte white. surface mounted driver.

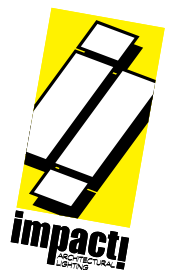
### emergency

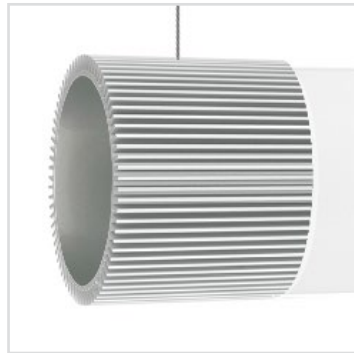
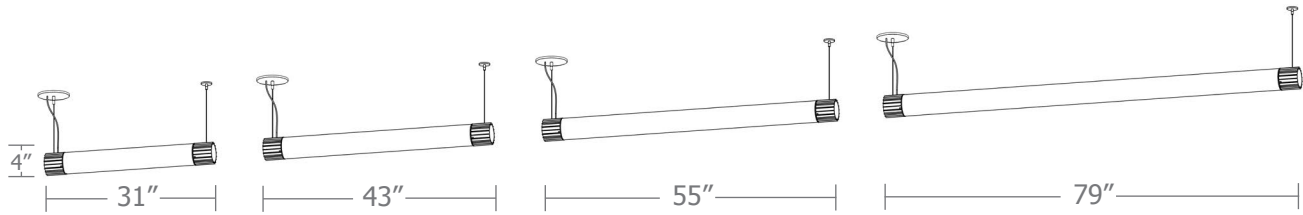
recommend use of inverter (by other).  
 optional WREM: wired for remote EM battery (by other).



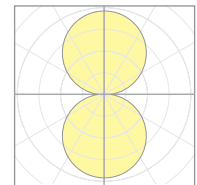
## catalog number

size	CCT	lumens	anodized finishes	options
<b>P8648.LV (4ft)</b> 4"dia X 55"long	<b>30</b> 3000K	<b>LO</b> 2400 lm	<b>AN</b> silver anodized	<b>3FT</b> 36" cables
	<b>35</b> 3500K	<b>HI</b> 4300 lm	<b>ANB</b> anodized black	<b>6FT</b> 72" cables
	<b>40</b> 4000K	<b>CL*</b> xxxx lm (1900lm-6450lm) <small>custom lumens consult factory</small>	<b>painted finish</b>	<b>CDVR</b> surface-mounted driver canopy
			<b>BS</b> brass	<b>WREM</b> wired for remote EM battery pack <small>(by other) (see note above)</small>
<b>P8672.LV (6ft)</b> 4"dia X 79"long	<b>30</b> 3000K	<b>LO</b> 3600 lm	<b>BU</b> blue	<b>ELD</b> EldoLED*
	<b>35</b> 3500K	<b>HI</b> 6450 lm	<b>BZ</b> bronze	<b>LUT</b> Lutron* <small>*consult factory</small>
	<b>40</b> 4000K	<b>HX</b> 7500 lm	<b>CP</b> champagne	
		<b>CL*</b> xxxx lm (3000lm-9100lm) <small>custom lumens consult factory</small>	<b>GM</b> gun metal	
			<b>MB</b> military blue	
			<b>MW</b> matte white	
			<b>OR</b> orange	
			<b>RD</b> red	
			<b>SS</b> satin silver	
			<b>TG</b> textured gray	
			<b>YO</b> yellow	
			<b>premium finish</b>	
			<b>RAL</b> specify RAL#	



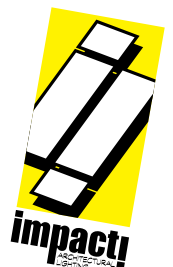


Cat No	Delivered* Lumens	Watts 120V / 277V	IES File #	LLF to be applied
P8624.LV LO	1400	15	12205	.63
P8624.LV HI	2150	23	12205	.98
P8636.LV LO	1880	20	12205	.85
P8636.LV HI	3750	40	12205	1.70
P8648.LV LO	2400	25	12207	.53
P8648.LV HI	4300	45	12207	.95
P8672.LV LO	3600	38	94267	.56
P8672.LV HI	6450	68	94267	1.01
P8672.LV HX	7500	79	94267	1.17

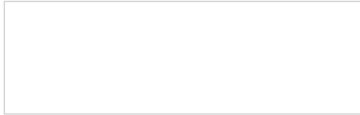


12207  
P9248-40HI

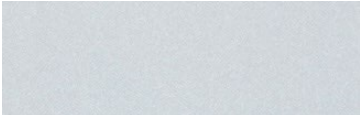
\*delivered lumens based on 4000K, 90 cri



**Powder Coat Paint Finishes**



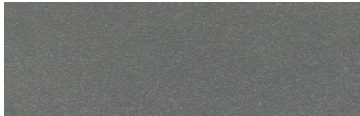
**MW** matte white



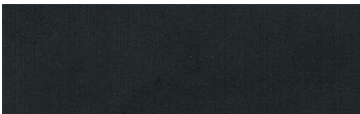
**AP** anodized paint  
**AN** silver anodized



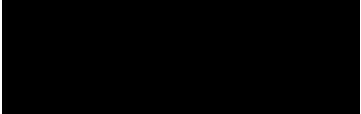
**SS** satin silver



**TG** textured gray



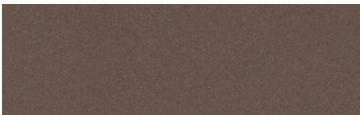
**FB** flat black



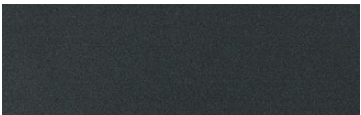
**SB** satin black  
**ANB** anodized black



**CP** champagne



**BZ** bronze



**GM** gun metal



**OR** orange 2011



**BU** blue 5017



**BS** brass



**RD** red 3020



**YO** yellow 1018



**MB** military blue

For accurate color verification, actual finish samples are available upon request.

**Premium Finishes\***



**RAL#**

\*Available on select series. Consult product submittal for availability.

