

job name:
 type:

sq.3™ ceiling spec sheet 90CRI

housing

smooth square extruded architectural 6063 aluminum outer housing in four lengths available in 15 standard powder coat paint finishes listed below.

LED

COB in 2700K, 3000K, 3500K, or 4000K (90 cri standard) rated >36,000 hours L70 (6.8K) per LM-80 test data, and 71,000 hours projected life per IES TM-21.

downlight optics

LEDiL® Angelina 82mm dia 31mm high (RoHS compliant) available in 20° spot, 30° medium, 50° wide with specular anodized finish. 90° extra wide features matte white highly reflective finish. color mixing sublens standard. standard mounting clamp allows for easy replacement of reflector in field. the typical total beam angle is the full angle measured where the luminous intensity is half of the peak volume.

driver

in canopy, constant current, class P, class 2 power unit, class A sound rating, universal input (120-277V) programmable driver, 5% minimum dimming level, PF >0.90. protections include short circuit, input/output isolation and surge protection (3KV). wired for 0-10v dimming from factory.

finish

select from 15 standard powder coat paint finishes listed below or specify RAL# for custom colors.

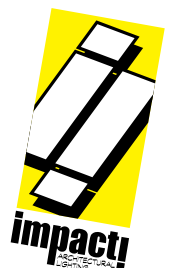
emergency

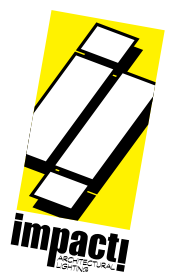
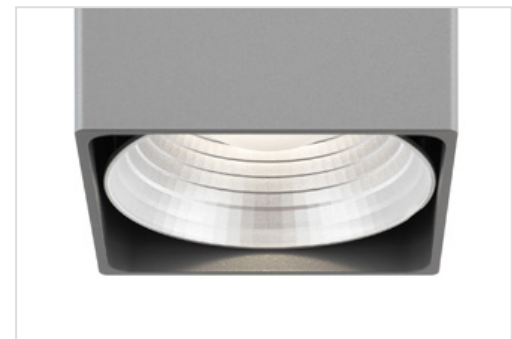
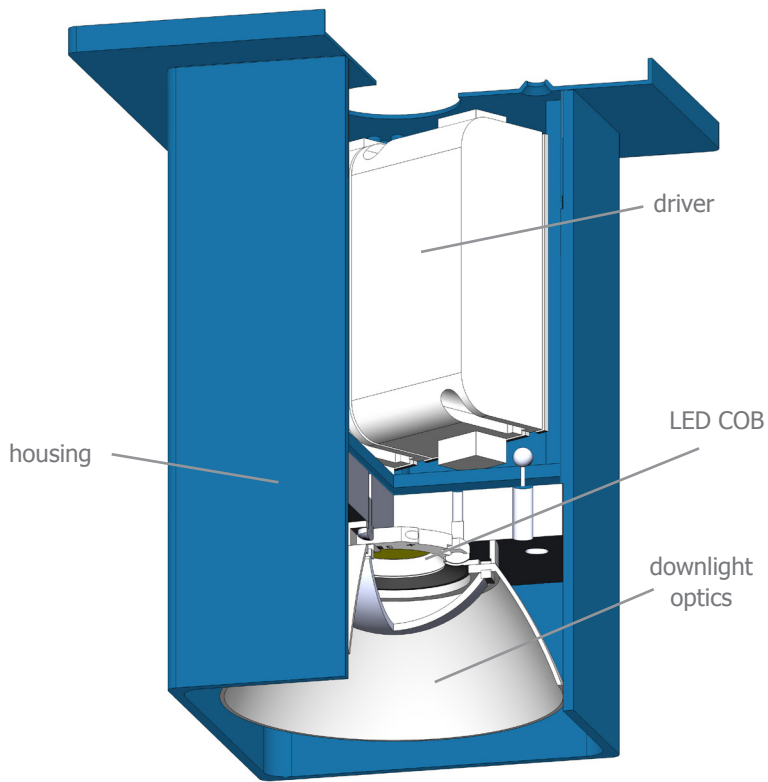
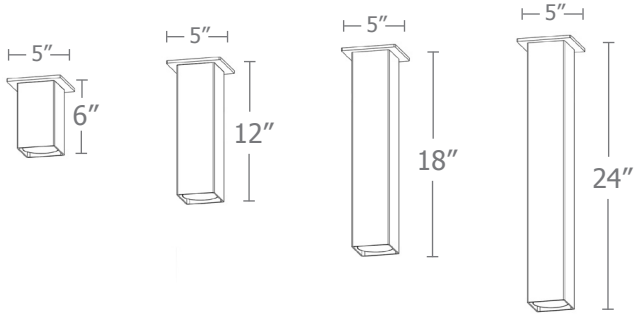
if required, recommend use of inverter (by other).



catalog number

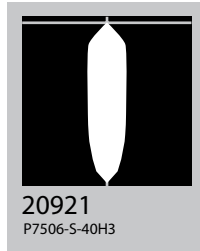
size	beam	CCT	lumens	painting finish
C6606 3.5"dia X 6"ht	S 20° spot	27 2700K	L1 395 lm	AP anodized paint
	M 30° med	30 3000K	L2 695 lm	BS brass
	W 50° wide	35 3500K	L3 995 lm	BU blue
C6612 3.5"dia X 12"ht	XW 90° extra wide	40 4000K	H1 1390 lm	BZ bronze
			H2 1985 lm	CP champagne
C6618 3.5"dia X 18"ht			H3 2780 lm	FB flat black
				GM gun metal
C6624 3.5"dia X 24"ht				MB military blue
				MW matte white
				OR orange
				RD red
				SB satin black
				SS satin silver
				TG textured gray
				YO yellow
				premium finish RAL specify RAL#



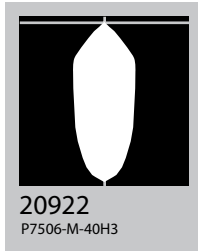


The application of a Light Loss Factor is required to:

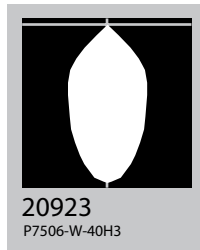
- match the lumen output for the power module specified
- incorporate the increased lumen output due to LED/Driver upgrades



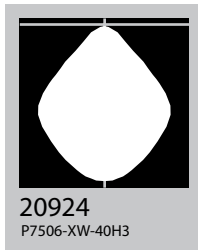
S 20° spot



M 30° med



W 50° wide



XW 90° extra wide

Cat No	Delivered* Lumens	Watts 120V / 277V	IES File #**	LLF to be applied
L1	395	4	W 20923	.12
L2	695	7	W 20923	.22
L3	995	10	W 20923	.31
H1	1390	14	W 20923	.44
H2	1985	20	W 20923	.63
H3	2780	28	W 20923	.88
	S 20° spot	M 30° med	W 50° wide	XW 90° extra
ies file #	20921	20922	20923	20924

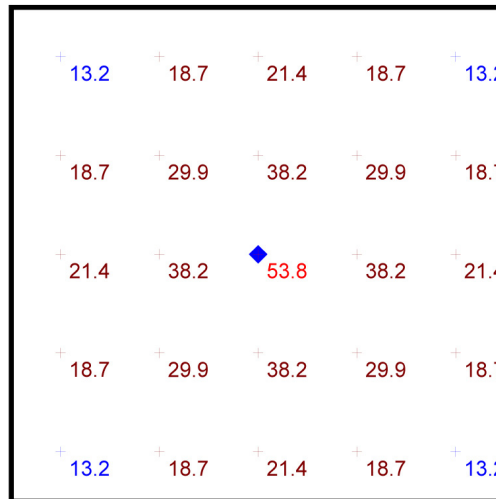
*delivered lumens based on 4000K, 90+ cri

**choose the file that matches your beam spread

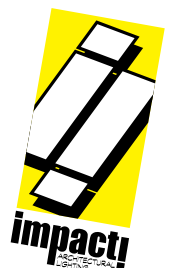
performance

- 10' x 10' x 14'H space
- 80/50/20 reflectances
- bottom of fixture at 10' aff
- FC readings at 2.5' aff
- layout conducted using H3 lumen output 2780 lumens unit w/ 50-deg. beam spread

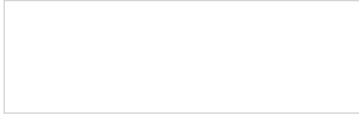
Statistics						
Description	Symbol	Avg	Max	Min	Max/Min	Avg/Min
sq.3	+	24.6 fc	53.8 fc	13.2 fc	4.1:1	1.9:1



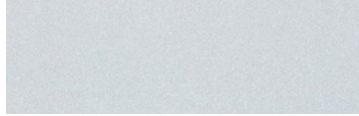
Plan View
Scale - 1" = 2ft



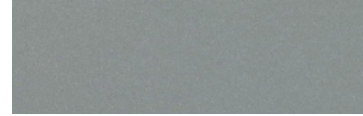
Powder Coat Paint Finishes



MW matte white



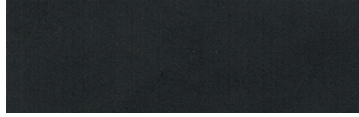
AP anodized paint



SS satin silver



TG textured gray



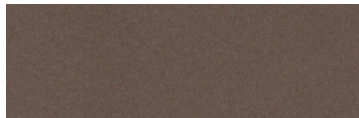
FB flat black



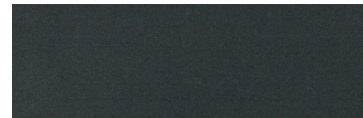
SB satin black



CP champagne



BZ bronze



GM gun metal



OR orange 2011



BU blue 5017



BS brass



RD red 3020



YO yellow 1018



MB military blue

For accurate color verification, actual finish samples are available upon request.

Premium Finishes*



RAL#

*Available on select series. Consult product submittal for availability.

