

job name:   
 type:

**sq.3.up™ spec sheet**    direct/indirect

**material**  
 smooth square extruded architectural 6063 aluminum outer housing in four lengths available in 21 standard powder coat paint finishes listed below.

**LED**  
 COBs in 2700K, 3000K, 3500K, or 4000K (90 cri standard) rated >36,000 hours L70 (6.8K) per LM-80 test data, and 71,000 hours projected life per IES TM-21.

**downlight optics**  
 LEDiL® Angelina 82mm dia 31mm high (RoHS compliant) available in 20° spot, 30° medium, 50° wide with specular anodized finish. 90° extra wide features matte white highly reflective finish. color mixing sublens standard. standard mounting clamp allows for easy replacement of reflector in field. the typical total beam angle is the full angle measured where the luminous intensity is half of the peak volume.

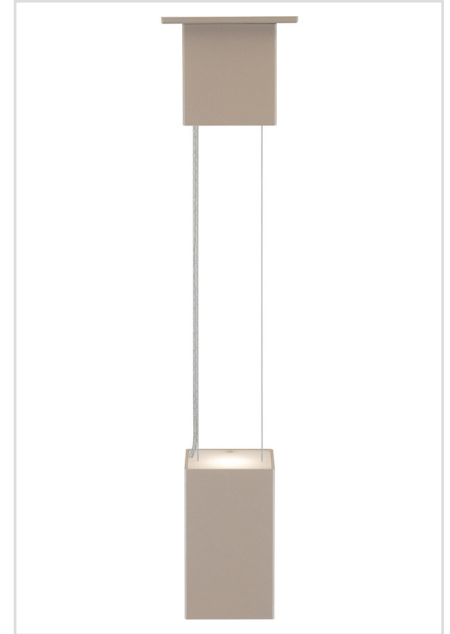
**uplight diffuser**  
 .118" thick laser cut optimum light diffusion acrylic. 72% light transmission with matte surface providing light scattering glare reduction. Colorless diffusion significantly reducing color shift of the LED's.

**drivers**  
 in canopy, constant current, class P, class 2 power units, class A sound rating, universal input (120-277V) programmable driver; 5% minimum dimming level, PF >0.90. protections include short circuit, input/output isolation and surge protection (3KV). wired for 0-10v dimming from factory.

**mounting**  
 extruded aluminum driver canopy painted to match fixture. ultrathin vertical stainless steel cables and field adjustable grippers that allow for exact AFF mounting heights. silver braid power cord standard. special universal mounting bracket allows EC to clock fixture orientation during installation.

**finish**  
 select from 21 standard powder coat paint finishes listed below or specify RAL# for custom colors.

**emergency**  
 if required, recommend use of inverter (by other).



**catalog number**

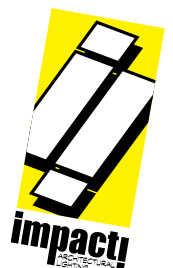
direct

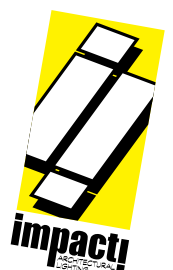
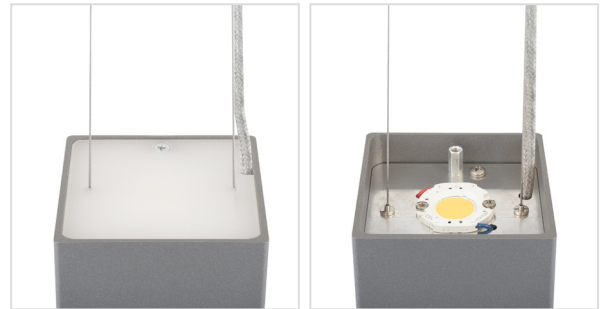
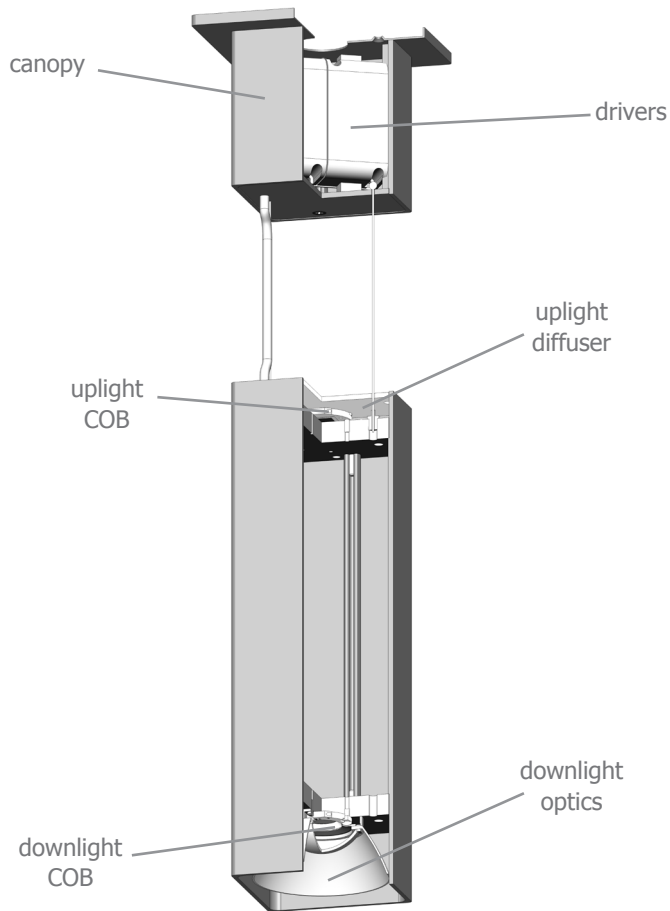
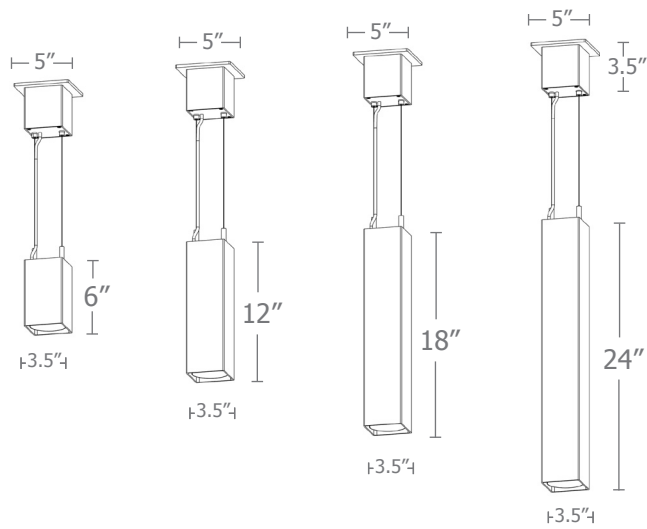
indirect

size	downlight beam spread	CCT	downlight lumens	uplight lumens	anodized finishes	options
<b>P6606.up</b> 3.5"dia X 6"ht	<b>S</b> 20° spot <b>M</b> 30° med <b>W</b> 50° wide <b>XW</b> 90° extra wide	<b>27</b> 2700K <b>30</b> 3000K <b>35</b> 3500K <b>40</b> 4000K	<b>L1</b> 395 lm <b>L2</b> 695 lm <b>L3</b> 995 lm <b>H1</b> 1390 lm <b>H2</b> 1985 lm	<b>L1</b> 340 lm <b>L2</b> 590 lm <b>L3</b> 845 lm <b>H1</b> 1185 lm	<b>AP</b> anodized paint <b>BN</b> brown <b>BR</b> brick red <b>BS</b> brass <b>BU</b> blue <b>BZ</b> bronze <b>CP</b> champagne <b>FB</b> flat black <b>GM</b> gun metal <b>GR</b> green <b>MB</b> military blue <b>MN</b> mint <b>MW</b> matte white <b>OR</b> orange <b>PL</b> purple <b>RD</b> red <b>SB</b> satin black <b>SS</b> satin silver <b>TG</b> textured gray <b>TW</b> textured white <b>YO</b> yellow	<b>3FT</b> 36" cables <b>6FT</b> 72" cables
<b>P6612.up</b> 3.5"dia X 12"ht			<b>L1</b> 395 lm <b>L2</b> 695 lm <b>L3</b> 995 lm <b>H1</b> 1390 lm <b>H2</b> 1985 lm <b>H3</b> 2780 lm	<b>L1</b> 340 lm <b>L2</b> 590 lm <b>L3</b> 845 lm <b>H1</b> 1185 lm		
<b>P6618.up</b> 3.5"dia X 18"ht						
<b>P6624.up</b> 3.5"dia X 24"ht						

**90 CRI**

premium finish  
 RAL specify RAL#





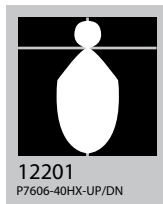
# Quick Calc Table

Tests indicated below are a combination of direct and indirect. LLFs are as close as possible. Downlight is given priority.

for more detailed calculations see table on next page.

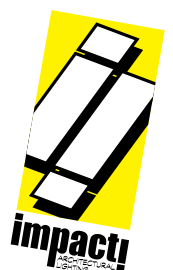
Cat No	Direct Delivered* Lumens	Indirect Delivered* Lumens	Watts 120V / 277V	IES File #	LLF to be applied
<b>P6606 L1 L1</b>	475	405	8	12201	.17
<b>P6606 L2 L2</b>	830	710	14	12201	.29
<b>P6606 L3 L3</b>	1190	1010	20	12201	.42
<b>P6606 H1 L3</b>	1665	1010	24	12201	.58
<b>P6606 H2 L3</b>	2380	1010	30	12201	.83
<b>P6612 L1 L1</b>	475	405	8	12203	.13
<b>P6612 L2 L2</b>	830	710	14	12203	.24
<b>P6612 L3 L3</b>	1190	1010	20	12203	.34
<b>P6612 H1 H1</b>	1665	1420	28	12203	.47
<b>P6612 H2 H1</b>	2380	1420	34	12203	.67
<b>P6612 H3 H1</b>	3330	1420	43	12203	.94

\*delivered lumens based on 4000K, 90+ cri



The application of a Light Loss Factor is required to:

- match the lumen output for the power module specified
- incorporate the increased lumen output due to LED/Driver upgrades



# Advanced Calculation Table

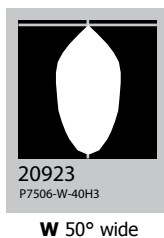
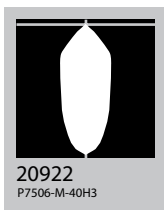
Tests are for each element separately and must be "stacked" to represent single fixture  
 Consult factory for applications assistance

## Direct

## Indirect

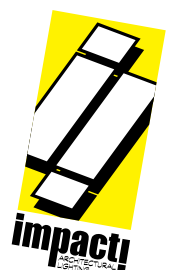
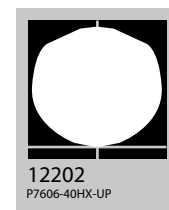
Cat No	Delivered* Lumens	Watts 120V / 277V	IES File #	LLF to be applied	Delivered* Lumens	Watts 120V / 277V	IES File #	LLF to be applied
<b>L1</b>	475	4	<b>20921</b> spot	.15	405	4	<b>12202</b>	.29
			<b>20922</b> med	.15				
			<b>20923</b> wide	.15				
			<b>20924</b> x-wide	.15				
<b>L2</b>	830	7	<b>20921</b> spot	.26	710	7	<b>12202</b>	.50
			<b>20922</b> med	.26				
			<b>20923</b> wide	.26				
			<b>20924</b> x-wide	.25				
<b>L3</b>	1190	10	<b>20921</b> spot	.37	1010	10	<b>12202</b>	.72
			<b>20922</b> med	.37				
			<b>20923</b> wide	.38				
			<b>20924</b> x-wide	.36				
<b>H1</b>	1665	14	<b>20921</b> spot	.52	1420	14	<b>12202</b>	1.01
			<b>20922</b> med	.52				
			<b>20923</b> wide	.53				
			<b>20924</b> x-wide	.51				
<b>H2</b>	2380	21	<b>20921</b> spot	.74	N/A P7506			
			<b>20922</b> med	.75				
			<b>20923</b> wide	.75				
			<b>20924</b> x-wide	.73				
<b>H3</b>	3330	28	<b>20921</b> spot	1.04				
			<b>20922</b> med	1.05				
			<b>20923</b> wide	1.05				
			<b>20924</b> x-wide	1.02				

\*delivered lumens based on 4000K, 90+ cri

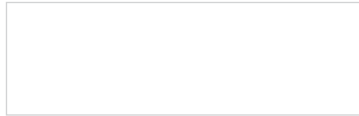


The application of a Light Loss Factor is required to:

- match the lumen output for the power module specified
- incorporate the increased lumen output due to LED/Driver upgrades



## Powder Coat Paint Finishes



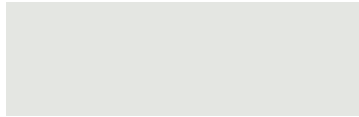
**MW** matte white



**CP** champagne



**YO** yellow 1018



**TW** textured white



**BZ** bronze



**RD** red 3020



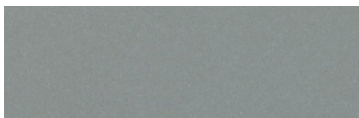
**AP** anodized paint



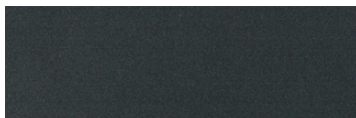
**BS** brass



**BU** blue 5017



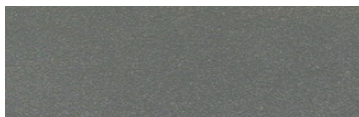
**SS** satin silver



**GM** gun metal



**OR** orange 2011



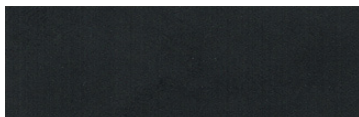
**TG** textured gray



**BR** brick red



**MN** mint 6019



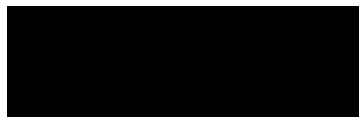
**FB** flat black



**BN** brown 8023



**GR** green 6018



**SB** satin black



**MB** military blue



**PL** purple 4005

For accurate color verification, actual finish samples are available upon request.

## Premium Finishes\*



**RAL#**

\*Available on select series. Consult product submittal for availability.

