

job name:
 type:

sq.3™ spec sheet

housing

smooth square extruded architectural 6063 aluminum outer housing in four lengths available in 21 standard powder coat paint finishes listed below.

LED

COB in 2700K, 3000K, 3500K, or 4000K (90 cri standard) rated >36,000 hours L70 (6.8K) per LM-80 test data, and 71,000 hours projected life per IES TM-21.

downlight optics

LEDiL® Angelina 82mm dia 31mm high (RoHS compliant) available in 20° spot, 30° medium, 50° wide with specular anodized finish. 90° extra wide features matte white highly reflective finish. color mixing sublens standard. standard mounting clamp allows for easy replacement of reflector in field. the typical total beam angle is the full angle measured where the luminous intensity is half of the peak volume.

driver

in canopy, constant current, class P, class 2 power unit, class A sound rating, universal input (120-277V) programmable driver, 5% minimum dimming level, PF >0.90. protections include short circuit, input/output isolation and surge protection (3KV). wired for 0-10v dimming from factory.

mounting

extruded aluminum driver canopy painted to match fixture. ultrathin vertical stainless steel cables and adjustable grippers that allow for exact AFF mounting heights. cloth-covered power cord color options listed below. cord requires special stripping tool (link). special universal mounting bracket allows EC to clock fixture orientation during installation.

power over cable (optional)

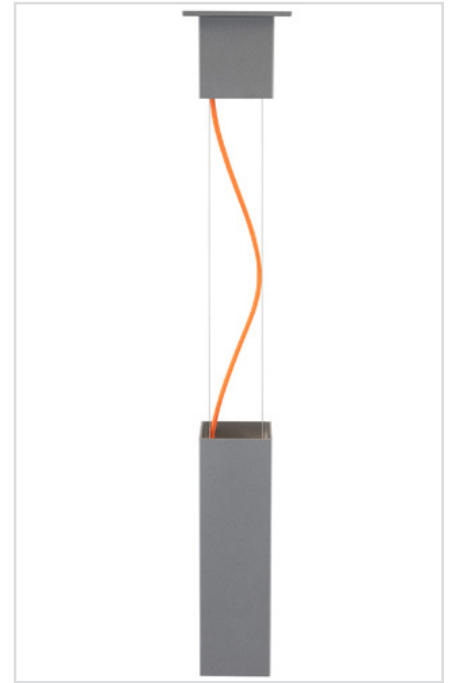
Class 2 LED powered suspension system that suspends and powers the fixture with thin stainless steel copper-core conductive cables, providing a clean look without the need for a separate power cord. powered suspension requires cable cutter (link) specifically designed to cut stainless steel aircraft cable from 1/32" to 1/8".

finish

select from 21 standard powder coat paint finishes listed below or specify RAL# for custom colors.

emergency

if required, recommend use of inverter (by other).



catalog number

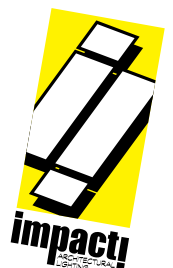
--	--	--	--	--	--	--

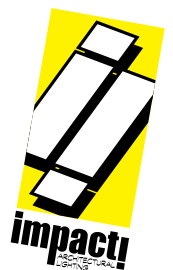
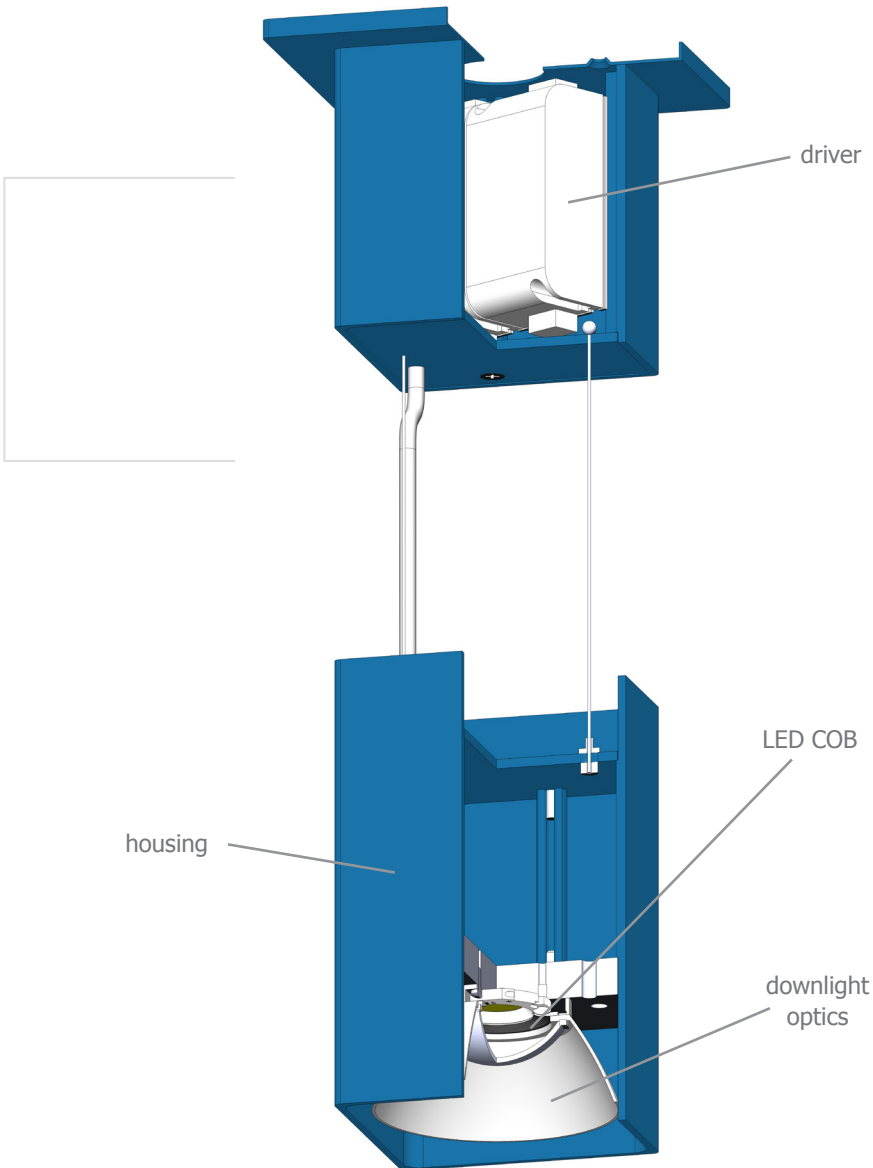
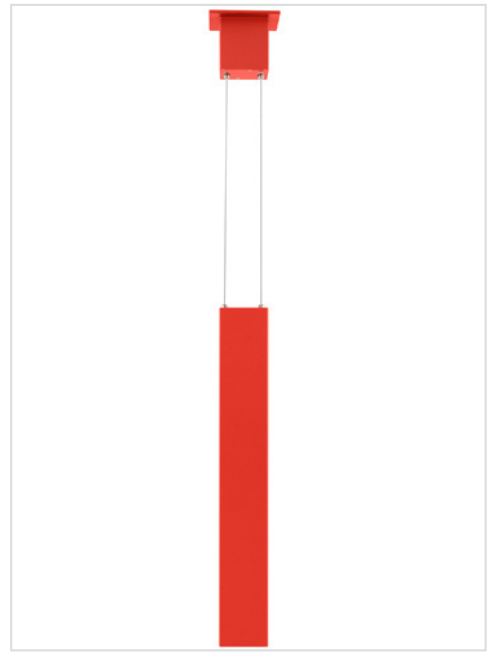
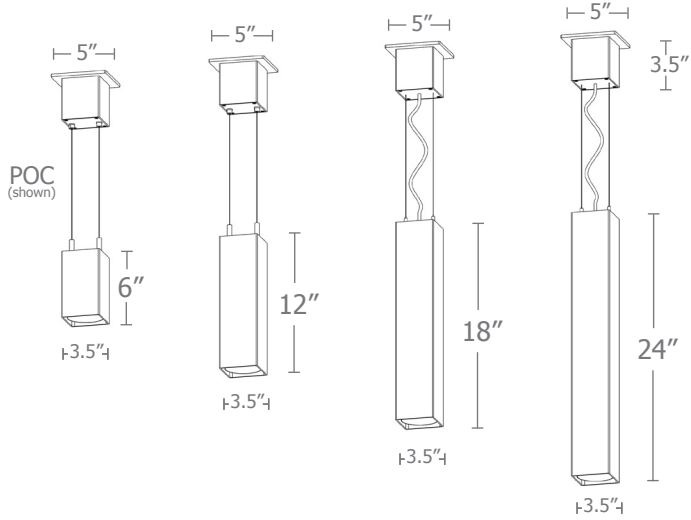
size	beam	CCT	lumens	standard finishes	power cord	options		
P6606 3.5" dia X 6" ht	S 20° spot	27 2700K	L1 395 lm	AP anodized paint BN brown BR brick red BS brass BU blue BZ bronze CP champagne FB flat black GM gun metal GR green MB military blue MN mint MW matte white OR orange PL purple RD red SB satin black SS satin silver TG textured gray TW textured white YO yellow	BUPC blue cloth cord	3FT 36" cables		
	M 30° med	30 3000K	L2 695 lm				ORPC orange cloth cord	6FT 72" cables
	W 50° wide	35 3500K	L3 995 lm					
P6612 3.5" dia X 12" ht	XW 90° extra wide	40 4000K	H1 1390 lm		RDPC red cloth cord	WGPC white & gray dot cloth cord	POC power over cable	
			H2 1985 lm					
P6618 3.5" dia X 18" ht			H3 2780 lm		FB flat black			
					GM gun metal			
P6624 3.5" dia X 24" ht					GR green			
					MB military blue			
					MN mint			
					MW matte white			
					OR orange			
					PL purple			
					RD red			
					SB satin black			
				SS satin silver				
				TG textured gray				
				TW textured white				
				YO yellow				

90 CRI

premium finish

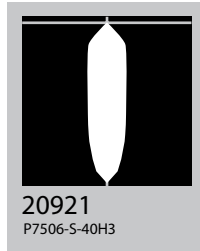
RAL specify RAL#



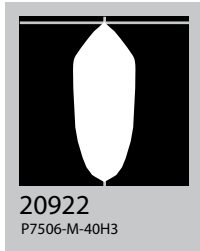


The application of a Light Loss Factor is required to:

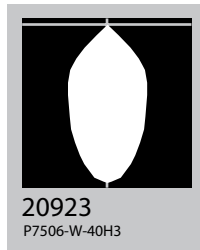
- match the lumen output for the power module specified
- incorporate the increased lumen output due to LED/Driver upgrades



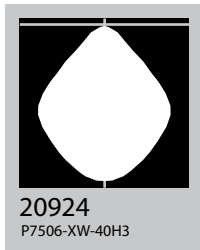
S 20° spot



M 30° med



W 50° wide



XW 90° extra wide

Cat No	Delivered* Lumens	Watts 120V / 277V	IES File #**	LLF to be applied
L1	395	4	W 20923	.15
L2	695	7	W 20923	.26
L3	995	10	W 20923	.37
H1	1390	14	W 20923	.52
H2	1985	20	W 20923	.75
H3	2780	28	W 20923	1.04
	S 20° spot	M 30° med	W 50° wide	XW 90° extra
ies file #	20921	20922	20923	20924

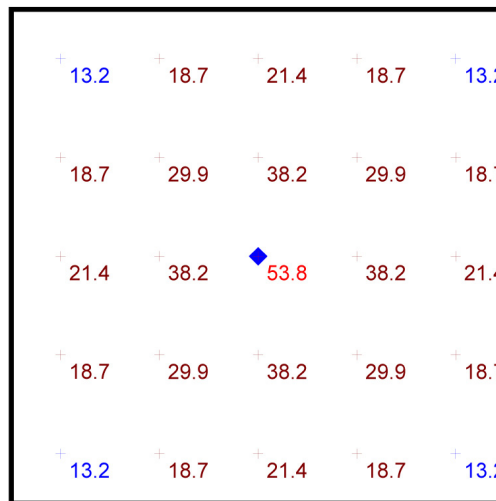
*delivered lumens based on 4000K, 90+ cri

**choose the file that matches your beam spread

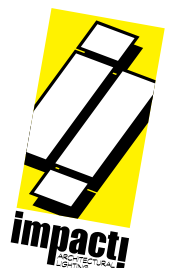
performance

- 10' x 10' x 14'H space
- 80/50/20 reflectances
- bottom of fixture at 10' aff
- FC readings at 2.5' aff
- layout conducted using H3 lumen output 3000 lumens unit w/ 50-deg. beam spread

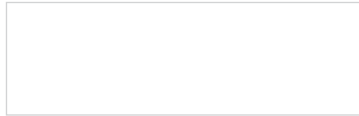
Statistics						
Description	Symbol	Avg	Max	Min	Max/Min	Avg/Min
sq.3	+	24.6 fc	53.8 fc	13.2 fc	4.1:1	1.9:1



Plan View
Scale - 1" = 2ft



Powder Coat Paint Finishes



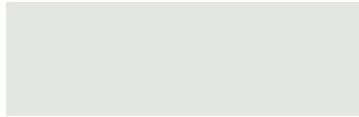
MW matte white



CP champagne



YO yellow 1018



TW textured white



BZ bronze



RD red 3020



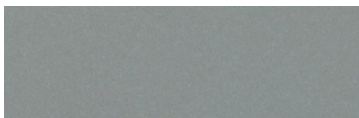
AP anodized paint



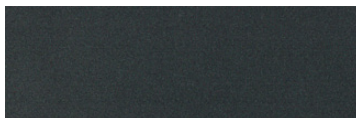
BS brass



BU blue 5017



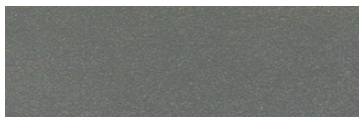
SS satin silver



GM gun metal



OR orange 2011



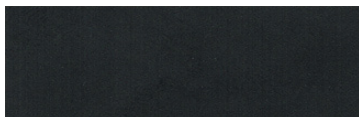
TG textured gray



BR brick red



MN mint 6019



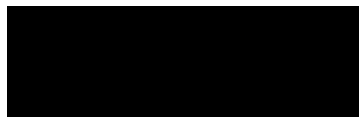
FB flat black



BN brown 8023



GR green 6018



SB satin black



MB military blue



PL purple 4005

For accurate color verification, actual finish samples are available upon request.

Premium Finishes*



RAL#

*Available on select series. Consult product submittal for availability.

