

job name:
 type:

sq.3™ spec sheet

material

smooth square extruded architectural 6063 aluminum outer housing in four lengths available in 21 standard powder coat paint finishes listed below.

LED

COB in 2700K, 3000K, 3500K, or 4000K (90 cri standard) rated >36,000 hours L70 (6.8K) per LM-80 test data, and 71,000 hours projected life per IES TM-21.

downlight optics

LEDiL® Angelina 82mm dia 31mm high (RoHS compliant) available in 20° spot, 30° medium, 50° wide with specular anodized finish. 90° extra wide features matte white highly reflective finish. color mixing sublens standard. standard mounting clamp allows for easy replacement of reflector in field. the typical total beam angle is the full angle measured where the luminous intensity is half of the peak volume.

driver

in canopy, constant current, class P, class 2 power unit, class A sound rating, universal input (120-277V) programmable driver, 5% minimum dimming level, PF >0.90. protections include short circuit, input/output isolation and surge protection (3KV). wired for 0-10v dimming from factory.

mounting

extruded aluminum driver canopy painted to match texture. ultrathin vertical stainless steel cables and field adjustable grippers that allow for exact AFF mounting heights. cloth-covered power cord color options listed below. cord requires special stripping tool (link). special universal mounting bracket allows EC to clock fixture orientation during installation.

power over cable (optional)

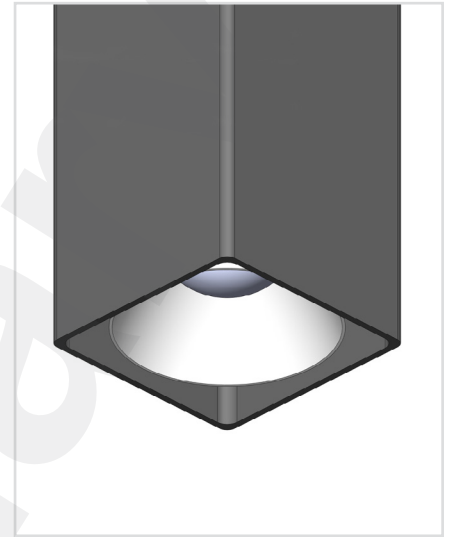
Class 2 LED powered suspension system that suspends and powers the fixture with thin stainless steel copper-core conductive cables, providing a clean look without the need for a separate power cord. powered suspension requires cable cutter (link) specifically designed to cut stainless steel aircraft cable from 1/32" to 1/8".

finish

select from 21 standard powder coat paint finishes listed below or specify RAL# for custom colors.

emergency

if required, recommend use of inverter (by other).

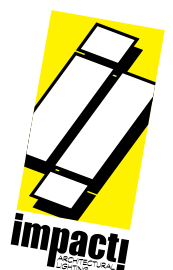


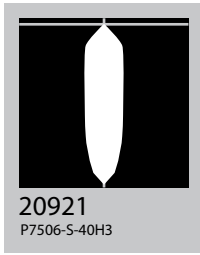
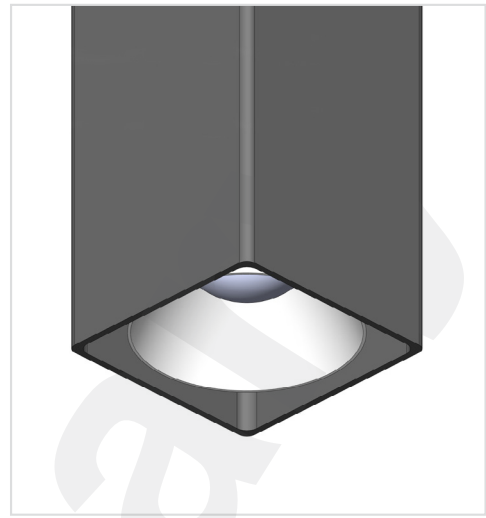
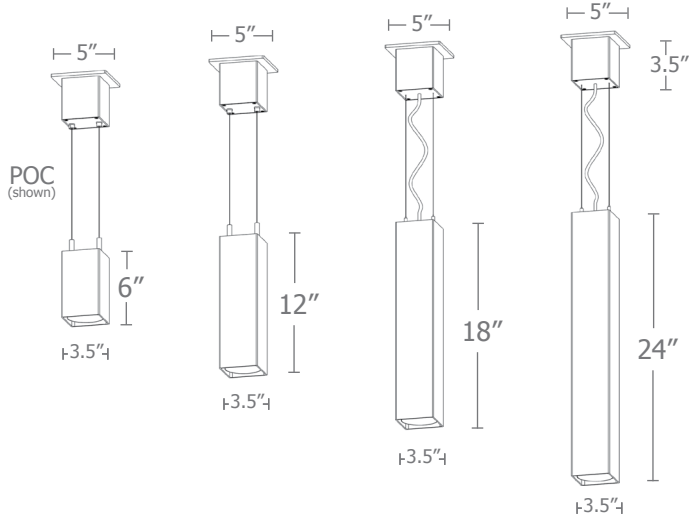
catalog number

size	beam	CCT	lumens	standard finishes	power cord	options
P6606 3.5" dia X 6" ht	S 20° spot	27 2700K	L1 400 lm	AP anodized paint	BUPC blue cloth cord	3FT 36" cables
	M 30° med	30 3000K	L2 700 lm	BN brown	ORPC orange cloth cord	6FT 72" cables
	W 50° wide	35 3500K	L3 1000 lm	BR brick red	PLPC purple cloth cord	
P6612 3.5" dia X 12" ht	XW 90° extra wide	35 3500K	H1 1400 lm	BS brass	RDPC red cloth cord	
		40 4000K	H2 1990 lm	BU blue	WGPC white & gray dot cloth cord	
P6618 3.5" dia X 18" ht			H3 2780 lm	BZ bronze	POC power over cable	
				CP champagne		
P6624 3.5" dia X 24" ht				FB flat black		
				GM gun metal		
				GR green		
				MB military blue		
				MN mint		
				MW matte white		
				OR orange		
				PL purple		
				RD red		
				SB satin black		
				SS satin silver		
			TG textured gray			
			TW textured white			
			YO yellow			

premium finish

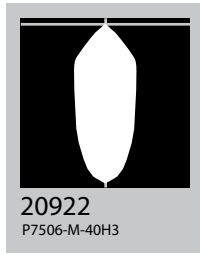
RAL specify RAL#





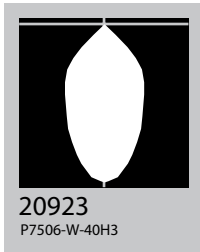
20921
P7506-S-40H3

S 20° spot



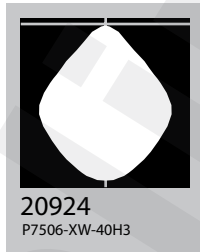
20922
P7506-M-40H3

M 30° med



20923
P7506-W-40H3

W 50° wide



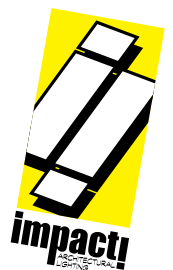
20924
P7506-XW-40H3

XW 90° extra wide

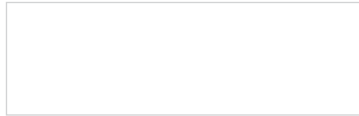
Cat No	Delivered* Lumens	Watts	
		120V / 277V	120V Amps 277V

L1	400	4	.03	.01
L2	700	7	.06	.03
L3	1000	10	.08	.04
H1	1400	14	.12	.05
H2	1990	20	.17	.07
H3	2780	28	.24	.10
	S 20° spot	M 30° med	W 50° wide	XW 90° extra
ies file #	20921	20922	20923	20924

*delivered lumens based on 4000K, 90+ cri



Powder Coat Paint Finishes



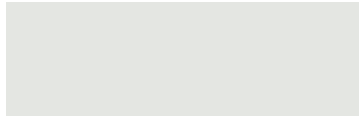
MW matte white



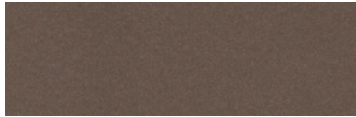
CP champagne



YO yellow 1018



TW textured white



BZ bronze



RD red 3020



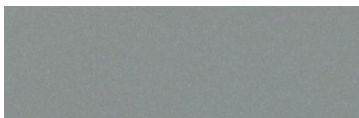
AP anodized paint



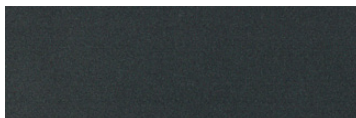
BS brass



BU blue 5017



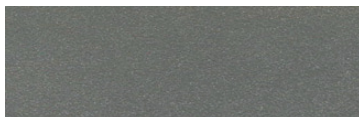
SS satin silver



GM gun metal



OR orange 2011



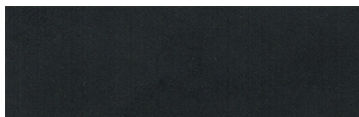
TG textured gray



BR brick red



MN mint 6019



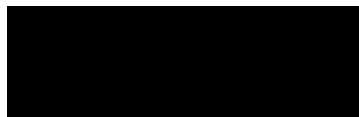
FB flat black



BN brown 8023



GR green 6018



SB satin black



MB military blue



PL purple 4005

For accurate color verification, actual finish samples are available upon request.

Premium Finishes*



RAL#

*Available on select series. Consult product submittal for availability.

