

job name:
 type:

na.row.up™ spec sheet direct/indirect

material
 smooth extruded aluminum outer housing in four lengths available in 21 standard powder coat paint finishes listed below.

LED
 COBs in 2700K, 3000K, 3500K, or 4000K (80 cri standard) (90 cri optional) rated >36,000 hours L70 (6.8K) per LM-80 test data, and 71,000 hours projected life per IES TM-21.

downlight optics
 LEDiL® Angelina 82mm dia 31mm high (RoHS compliant) available in 20° spot, 30° medium, 50° wide with specular anodized finish. 90° extra wide features matte white highly reflective finish. color mixing sublens standard. standard mounting clamp allows for easy replacement of reflector in field. the typical total beam angle is the full angle measured where the luminous intensity is half of the peak volume.

uplight diffuser
 .118" thick laser cut optimum light diffusion acrylic. 72% light transmission with matte surface providing light scattering glare reduction. Colorless diffusion significantly reducing color shift of the LED's.

drivers
 in canopy, constant current, class P, class 2 power units, class A sound rating, universal input (120-277V) programmable driver, 5% minimum dimming level, PF >0.90. protections include short circuit, input/output isolation and surge protection (3KV). wired for 0-10v dimming from factory.

mounting
 extruded aluminum canopy painted to match fixture. ultrathin vertical stainless steel cables and field adjustable grippers that allow for exact AFF mounting heights. silver braid power cord standard.

finish
 select from 21 standard powder coat paint finishes listed below or specify RAL# for custom colors.

emergency
 if required, recommend use of inverter (by other).



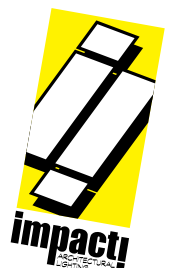
catalog number

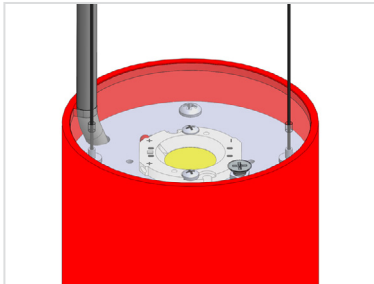
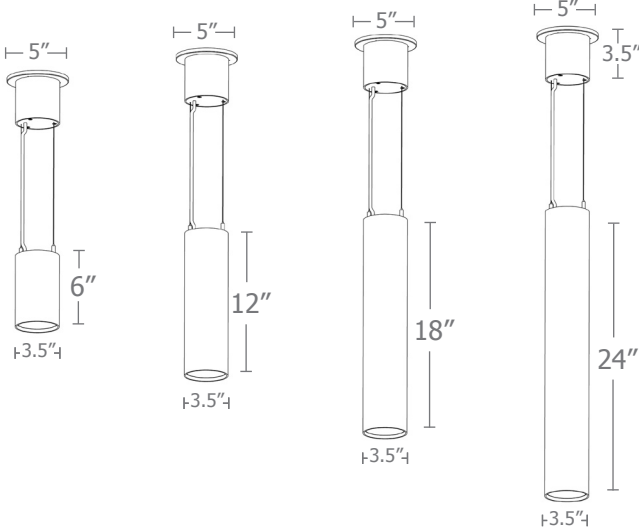
direct

indirect

size	downlight beam spread	CCT	downlight lumens	uplight lumens	anodized finishes	options
P7606.up 3.5" dia X 6" ht	S 20° spot M 30° med W 50° wide XW 90° extra wide	27 2700K 30 3000K 35 3500K 40 4000K	L1 450 lm L2 800 lm L3 1000 lm H1 1500 lm H2 2200 lm	L1 420 lm L2 735 lm L3 1050 lm H1 N/A	AP anodized paint BN brown BR brick red BS brass BU blue BZ bronze CP champagne FB flat black GM gun metal GR green MB military blue MN mint MW matte white OR orange PL purple RD red SB satin black SS satin silver TG textured gray TW textured white YO yellow	3FT 36" cables 6FT 72" cables 90CRI
P7612.up 3.5" dia X 12" ht			L1 450 lm L2 800 lm L3 1000 lm H1 1500 lm H2 2200 lm H3 3000 lm	L1 420 lm L2 735 lm L3 1050 lm H1 1465 lm		
P7618.up 3.5" dia X 18" ht						
P7624.up 3.5" dia X 24" ht						

premium finish
 RAL specify RAL#

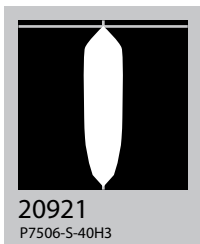




Cat No **Direct Delivered* Lumens** **Watts 120V / 277V** **Indirect Delivered* Lumens** **Watts 120V / 277V**

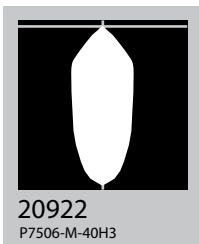
L1	450	4	405	4
L2	800	7	705	7
L3	1000	10	1010	10
H1	1500	14	1410	14
H2	2200	20	12202	
H3	3000	29		
	S 20° spot	M 30° med	W 50° wide	XW 90° extra
ies file #	20921	20922	20923	20924

*delivered lumens based on 4000K, 80+ cri (90cri multiplier .83)



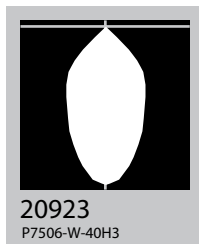
20921
P7506-S-40H3

S 20° spot



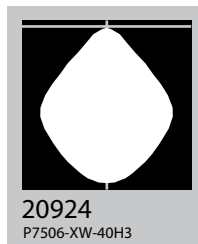
20922
P7506-M-40H3

M 30° med



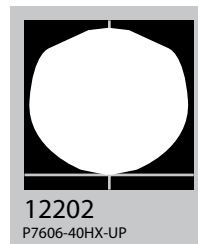
20923
P7506-W-40H3

W 50° wide

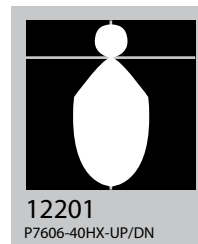


20924
P7506-XW-40H3

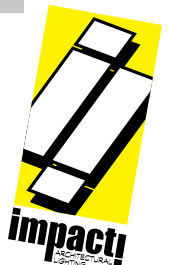
XW 90° extra wide



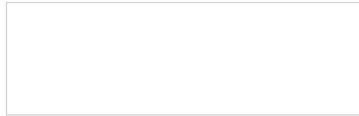
12202
P7606-40HX-UP



12201
P7606-40HX-UP/DN



Powder Coat Paint Finishes



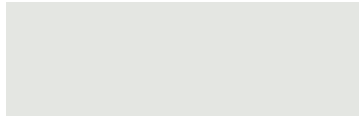
MW matte white



CP champagne



YO yellow 1018



TW textured white



BZ bronze



RD red 3020



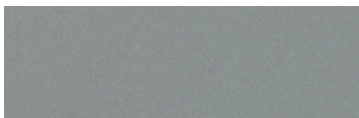
AP anodized paint



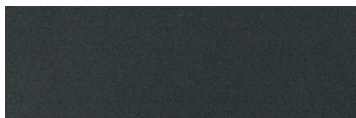
BS brass



BU blue 5017



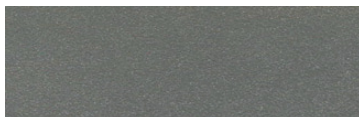
SS satin silver



GM gun metal



OR orange 2011



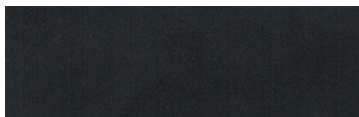
TG textured gray



BR brick red



MN mint 6019



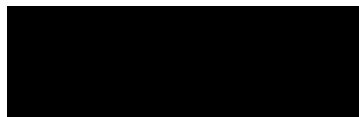
FB flat black



BN brown 8023



GR green 6018



SB satin black



MB military blue



PL purple 4005

For accurate color verification, actual finish samples are available upon request.

Premium Finishes*



RAL#

*Available on select series. Consult product submittal for availability.

