

job name:
 type:

na.row™ ceiling spec sheet

material

3.5" smooth extruded aluminum outer housing in four lengths available in 21 standard powder coat paint finishes listed below.

LED

COB in 2700K, 3000K, 3500K, or 4000K (80 cri standard) (90 cri optional) rated >36,000 hours L70 (6.8K) per LM-80 test data.

driver

integral,* constant current, class P, class 2 power unit, class A sound rating, universal input (120-277V) programmable driver, 5% minimum dimming level, PF >0.90. protections include short circuit, input/output isolation and surge protection (3KV). wired for 0-10v dimming from factory. *H3 lumen package in C7606 requires min. 2-1/8" deep j-box.

finish

select from 21 standard powder coat paint finishes listed below or specify RAL# for custom colors.

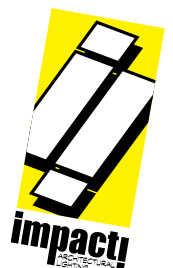
emergency

if required, recommend use of inverter (by other).

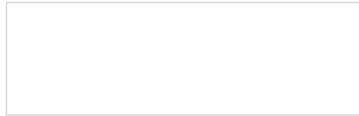


catalog number

size	beam	CCT	lumens	standard finishes	options 90CRI
C7606 3.5" dia X 6.25" ht	S 20° spot M 30° med W 50° wide	27 2700K 30 3000K 35 3500K 40 4000K	L1 450 lm L2 800 lm L3 1000 lm H1 1500 lm H2 2200 lm H3* 3000 lm <small>*H3 lumen package in C7606 requires min. 2-1/8" deep j-box.</small>	AP anodized paint BN brown BR brick red BS brass BU blue BZ bronze CP champagne FB flat black GM gun metal GR green MB military blue MN mint MW matte white OR orange PL purple RD red SB satin black SS satin silver TG textured gray TW textured white YO yellow	
C7612 3.5" dia X 12.25" ht	XW 90° extra wide				
C7618 3.5" dia X 18.25" ht					
C7624 3.5" dia X 24.25" ht					
				premium finish RAL specify RAL#	



Powder Coat Paint Finishes



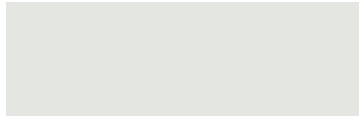
MW matte white



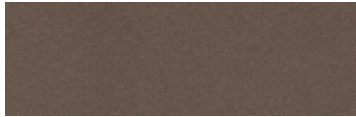
CP champagne



YO yellow 1018



TW textured white



BZ bronze



RD red 3020



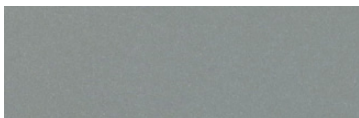
AP anodized paint



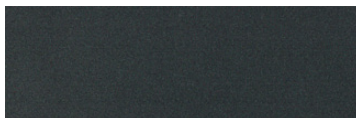
BS brass



BU blue 5017



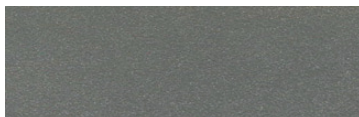
SS satin silver



GM gun metal



OR orange 2011



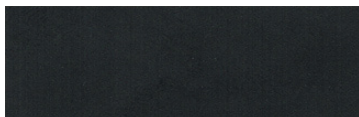
TG textured gray



BR brick red



MN mint 6019



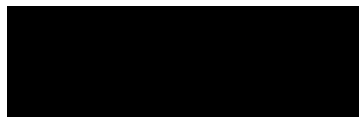
FB flat black



BN brown 8023



GR green 6018



SB satin black



MB military blue



PL purple 4005

For accurate color verification, actual finish samples are available upon request.

Premium Finishes*



RAL#

*Available on select series. Consult product submittal for availability.

