

job name:   
 type:

**na.row™ ceiling spec sheet**

**material**  
 3.5" smooth extruded aluminum outer housing in four lengths available in 21 standard powder coat paint finishes listed below.

**LED**  
 COB in 2700K, 3000K, 3500K, or 4000K (80 cri standard) (90 cri optional) rated >36,000 hours L70 (6.8K) per LM-80 test data.

**downlight optics**  
 LEDiL® Angelina 82mm dia 31mm high (RoHS compliant) available in 20° spot, 30° medium, 50° wide with specular anodized finish. 90° extra wide features matte white highly reflective finish. color mixing sublens standard. standard mounting clamp allows for easy replacement of reflector in field. the typical total beam angle is the full angle measured where the luminous intensity is half of the peak volume.

**driver**  
 integral,\* constant current, class P, class 2 power unit, class A sound rating, universal input (120-277V) programmable driver, 5% minimum dimming level, PF >0.90. protections include short circuit, input/output isolation and surge protection (3KV). wired for 0-10v dimming from factory. \*H3 lumen package in C7606 requires min. 2-1/8" deep j-box.

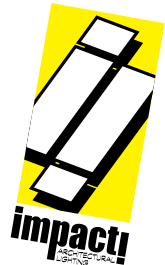
**finish**  
 select from 21 standard powder coat paint finishes listed below or specify RAL# for custom colors.

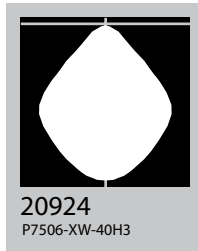
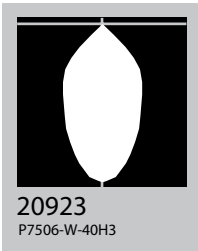
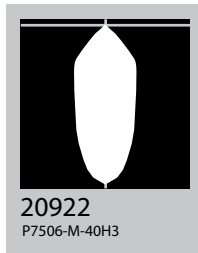
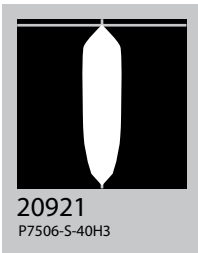
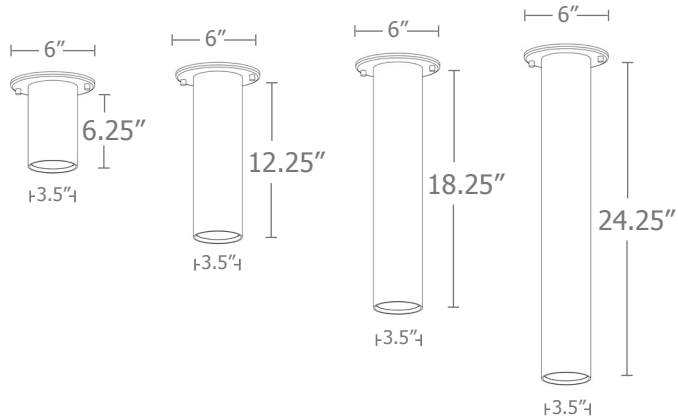
**emergency**  
 if required, recommend use of inverter (by other).



**catalog number**

size	beam	CCT	lumens	standard finishes	options 90CRI
<b>C7606</b> 3.5" dia X 6.25" ht	<b>S</b> 20° spot <b>M</b> 30° med <b>W</b> 50° wide	<b>27</b> 2700K <b>30</b> 3000K	<b>L1</b> 450 lm <b>L2</b> 800 lm	<b>AP</b> anodized paint <b>BN</b> brown <b>BR</b> brick red <b>BS</b> brass <b>BU</b> blue <b>BZ</b> bronze <b>CP</b> champagne <b>FB</b> flat black <b>GM</b> gun metal <b>GR</b> green <b>MB</b> military blue <b>MN</b> mint <b>MW</b> matte white <b>OR</b> orange <b>PL</b> purple <b>RD</b> red <b>SB</b> satin black <b>SS</b> satin silver <b>TG</b> textured gray <b>TW</b> textured white <b>YO</b> yellow	
<b>C7612</b> 3.5" dia X 12.25" ht	<b>XW</b> 90° extra wide	<b>35</b> 3500K <b>40</b> 4000K	<b>L3</b> 1000 lm <b>H1</b> 1500 lm <b>H2</b> 2200 lm <b>H3*</b> 3000 lm <small>*H3 lumen package in C7606 requires min. 2-1/8" deep j-box.</small>		
<b>C7618</b> 3.5" dia X 18.25" ht					
<b>C7624</b> 3.5" dia X 24.25" ht					
				<b>premium finish</b> RAL specify RAL#	



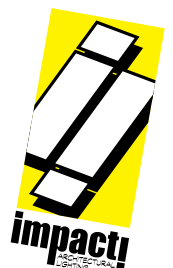


**Cat No**      **Delivered\* Lumens**      **Watts 120V / 277V**      **Amps 120V    277V**

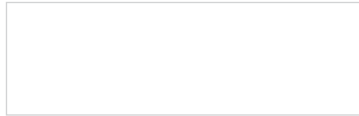
<b>L1</b>	450	4	.03	.01
<b>L2</b>	800	7	.06	.03
<b>L3</b>	1000	10	.08	.04
<b>H1</b>	1500	14	.12	.05
<b>H2</b>	2200	20	.17	.07
<b>H3**</b>	3000	29	.24	.10
	<b>S 20° spot</b>	<b>M 30° med</b>	<b>W 50° wide</b>	<b>XW 90° extra</b>
ies file #	20921	20922	20923	20924

\*delivered lumens based on 4000K, 80+ cri (90cri multiplier .83)

\*\*H3 lumen package in C7606 requires min. 2-1/8" deep j-box..



## Powder Coat Paint Finishes



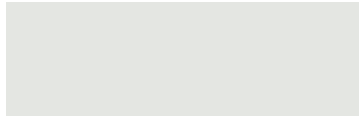
**MW** matte white



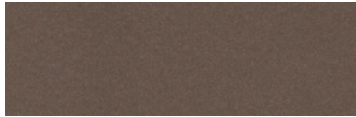
**CP** champagne



**YO** yellow 1018



**TW** textured white



**BZ** bronze



**RD** red 3020



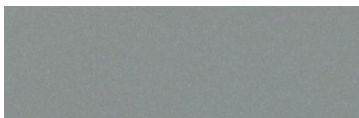
**AP** anodized paint



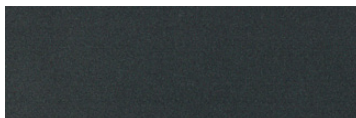
**BS** brass



**BU** blue 5017



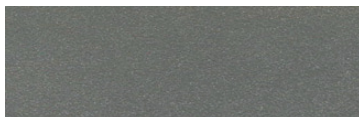
**SS** satin silver



**GM** gun metal



**OR** orange 2011



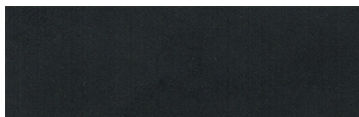
**TG** textured gray



**BR** brick red



**MN** mint 6019



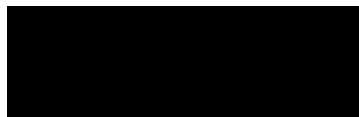
**FB** flat black



**BN** brown 8023



**GR** green 6018



**SB** satin black



**MB** military blue



**PL** purple 4005

For accurate color verification, actual finish samples are available upon request.

## Premium Finishes\*



**RAL#**

\*Available on select series. Consult product submittal for availability.

