

job name:
 type:

str8™ ceiling spec sheet

material

4" ribbed extruded aluminum outer housing in two lengths available in 2 anodized and 19 standard powder coat paint finishes listed below.

LED

COB in 2700K, 3000K, 3500K, or 4000K (80 cri standard) (90 cri optional) rated >36,000 hours L70 (6.8K) per LM-80 test data.

downlight optics

LEDiL® Angelina 82mm dia 31mm high (RoHS compliant) available in 20° spot, 30° medium, 50° wide with specular anodized finish. 90° extra wide features matte white highly reflective finish. color mixing sublens standard. standard mounting clamp allows for easy replacement of reflector in field. the typical total beam angle is the full angle measured where the luminous intensity is half of the peak volume.

driver

integral,* constant current, class P, class 2 power unit, class A sound rating, universal input (120-277V) programmable driver, 5% minimum dimming level, PF >0.90. protections include short circuit, input/output isolation and surge protection (3KV). wired for 0-10v dimming from factory. *H3 lumen package in C7506 requires min. 2-1/8" deep j-box.

finish

select from 2 anodized and 19 standard powder coat paint finishes listed below or specify RAL# for custom colors.

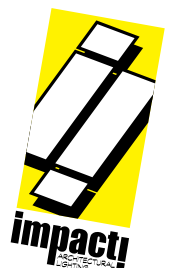
emergency

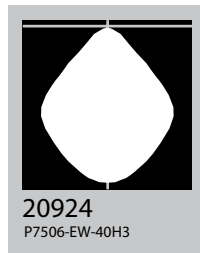
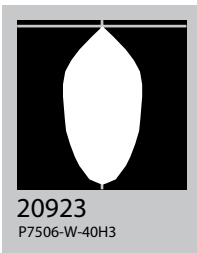
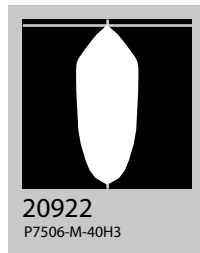
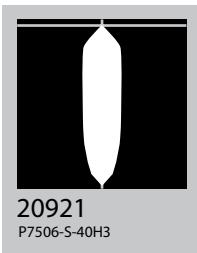
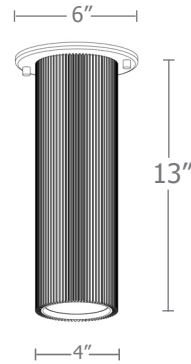
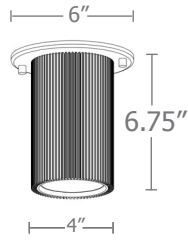
if required, recommend use of inverter (by other).



catalog number

size	beam	CCT	lumens	anodized finishes	options 90CRI
C7506 4"dia X 6.75"ht	S 20° spot M 30° med W 50° wide	27 2700K 30 3000K	L1 450 lm L2 800 lm	AN silver anodized ANB anodized black	
C7512 4"dia X 13"ht	XW 90° extra wide	35 3500K 40 4000K	L3 1000 lm H1 1500 lm H2 2200 lm H3* 3000 lm <small>*H3 lumen package in C7506 requires min. 2-1/8" deep j-box.</small>	painted finish BN brown BR brick red BS brass BU blue BZ bronze CP champagne GM gun metal GR green MB military blue MN mint MW matte white OR orange PL purple RD red SS satin silver TG textured gray TW textured white YO yellow	
				premium finish RAL specify RAL#	

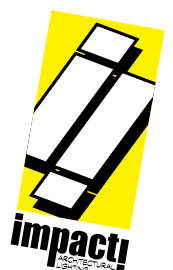




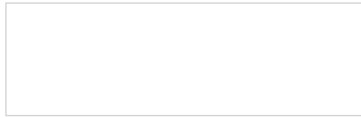
Cat No	Delivered* Lumens	Watts		Amps	
		120V / 277V	120V	277V	277V
L1	450	4	.03	.01	
L2	800	7	.06	.03	
L3	1000	10	.08	.04	
H1	1500	14	.12	.05	
H2	2200	20	.17	.07	
H3**	3000	29	.24	.10	
	S 20° spot	M 30° med	W 50° wide	XW 90° extra	
ies file #	20921	20922	20923	20924	

*delivered lumens based on 4000K, 80+ cri (90cri multiplier .83)

**H3 lumen package in C7506 requires min. 2-1/8" deep j-box..



Powder Coat Paint Finishes



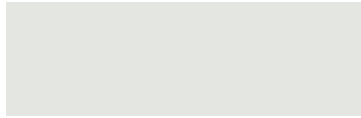
MW matte white



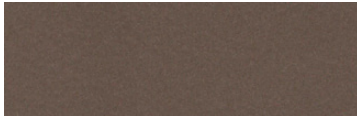
CP champagne



YO yellow 1018



TW textured white



BZ bronze



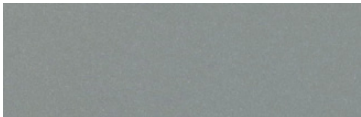
RD red 3020



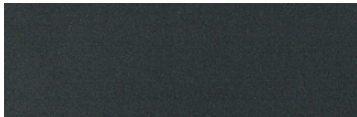
BS brass



BU blue 5017



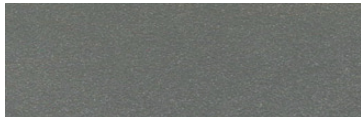
SS satin silver



GM gun metal



OR orange 2011



TG textured gray



BR brick red



MN mint 6019



BN brown 8023



GR green 6018



MB military blue



PL purple 4005

For accurate color verification, actual finish samples are available upon request.

Premium Finishes*



RAL#

*Available on select series. Consult product submittal for availability.

