

job name:   
 type:

## miniskrt™ ceiling spec sheet

### material

#### housing

precision CNC spun .064" aluminum outer housing available in 21 standard powder coat paint finishes listed below.  
 .060" aluminum liner powder coat painted high reflectance matte white.

#### diffuser

choose from .125" white acrylic or .064" spun aluminum powder coat painted high reflectance matte white.

#### LED

custom LED board in 3000K, 3500K, or 4000K (80+ cri standard) optional 90cri (see below). LEDs are rated >50,000 hours L70 (10K) at 85°C per LM-80 test data, and 70,000 hours projected life per IES TM-21.

#### driver

in canopy, constant current, class P class 2 power unit, class A sound rating, universal input (120-277V) programmable driver, 1% minimum dimming level, PF >0.90. protections include short circuit, input/output isolation and surge protection (3KV). wired for 0-10v dimming from factory.

#### finish

select from standard powder coat paint finishes or specify RAL# for custom colors.

#### emergency

if required, recommend use of inverter (by other).



## catalog number

--	--	--	--	--

### size

**C6112**  
12.5"dia X 8"ht

**C6116**  
16.25"dia X 9.5"ht

### diffuser

**A** acrylic  
**M** metal

### LED

**30LO** 3000K  
**30HI** 3000K  
  
**35LO** 3500K  
**35HI** 3500K  
  
**40LO** 4000K  
**40HI** 4000K

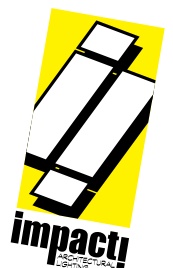
### standard finishes

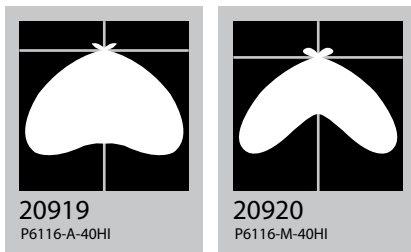
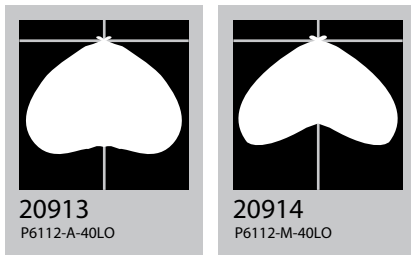
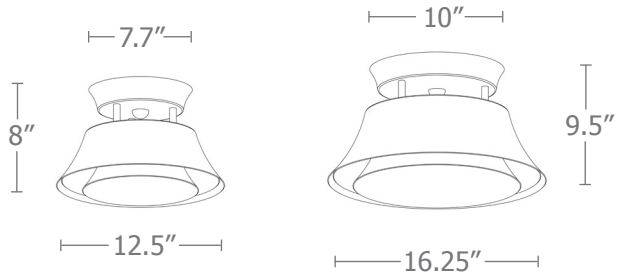
**AP** anodized paint  
**BN** brown  
**BR** brick red  
**BS** brass  
**BU** blue  
**BZ** bronze  
**CP** champagne  
**FB** flat black  
**GM** gun metal  
**GR** green  
**MB** military blue  
**MN** mint  
**MW** matte white  
**OR** orange  
**PL** purple  
**RD** red  
**SB** satin black  
**SS** satin silver  
**TG** textured gray  
**TW** textured white  
**YO** yellow

### options 90CRI

### premium finish

**RAL** specify RAL#

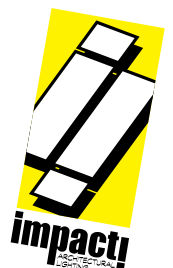




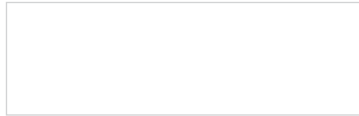
Cat No      Delivered\* Lumens      **Watts** 120V / 277V      **Amps** 120V 277V

Cat No	Delivered* Lumens	Watts 120V / 277V	Amps 120V	Amps 277V
<b>C6112-A LO</b>	1241	11	.08	.04
	ies file # 20913			
<b>C6112-M LO</b>	1001	11	.08	.04
	ies file # 20914			
<b>C6112-A HI</b>	2645	26	.19	.08
	ies file # 20915			
<b>C6112-M HI</b>	2147	26	.19	.08
	ies file # 20916			
<b>C6116-A LO</b>	2817	26	.19	.08
	ies file # 20917			
<b>C6116-M LO</b>	2120	26	.19	.08
	ies file # 20918			
<b>C6116-A HI</b>	3970	39	.28	.12
	ies file # 20919			
<b>C6116-M HI</b>	3008	39	.28	.12
	ies file # 20920			

\*delivered lumens based on 4000K, 80+ cri (90cri multiplier .83)



## Powder Coat Paint Finishes



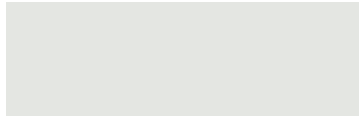
**MW** matte white



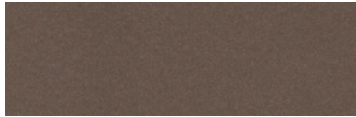
**CP** champagne



**YO** yellow 1018



**TW** textured white



**BZ** bronze



**RD** red 3020



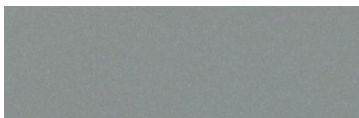
**AP** anodized paint



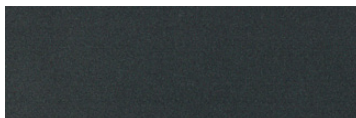
**BS** brass



**BU** blue 5017



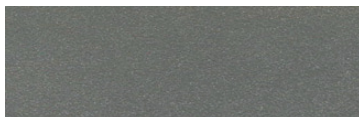
**SS** satin silver



**GM** gun metal



**OR** orange 2011



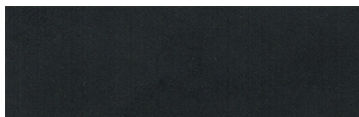
**TG** textured gray



**BR** brick red



**MN** mint 6019



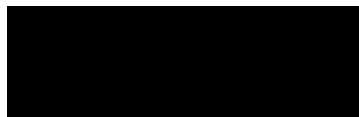
**FB** flat black



**BN** brown 8023



**GR** green 6018



**SB** satin black



**MB** military blue



**PL** purple 4005

For accurate color verification, actual finish samples are available upon request.

## Premium Finishes\*



**RAL#**

\*Available on select series. Consult product submittal for availability.

