

job name:
 type:

miniskrt™ ceiling spec sheet

material

housing

precision CNC spun .064" aluminum outer housing available in 21 standard powder coat paint finishes listed below. .060" aluminum liner powder coat painted high reflectance matte white.

diffuser

choose from .125" white acrylic or .064" spun aluminum powder coat painted high reflectance matte white.

LED

custom LED board in 3000K, 3500K, or 4000K (80+ cri standard) optional 90cri (see below). LEDs are rated >50,000 hours L70 (10K) at 85°C per LM-80 test data, and 70,000 hours projected life per IES TM-21.

driver

in canopy, constant current, class P class 2 power unit, class A sound rating, universal input (120-277V) programmable driver, 1% minimum dimming level, PF >0.90. protections include short circuit, input/output isolation and surge protection (3KV). wired for 0-10v dimming from factory.

finish

select from standard powder coat paint finishes or specify RAL# for custom colors.

emergency

if required, recommend use of inverter (by other).



catalog number

--	--	--	--	--

size

C6112
12.5"dia X 8"ht

C6116
16.25"dia X 9.5"ht

diffuser

A acrylic
M metal

LED

30LO 3000K
30HI 3000K
35LO 3500K
35HI 3500K
40LO 4000K
40HI 4000K

painted finish

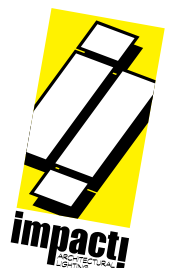
AP anodized paint
BS brass
BU blue
BZ bronze
CP champagne
FB flat black
GM gun metal
MB military blue
MW matte white
OR orange
RD red
SB satin black
SS satin silver
TG textured gray
YO yellow

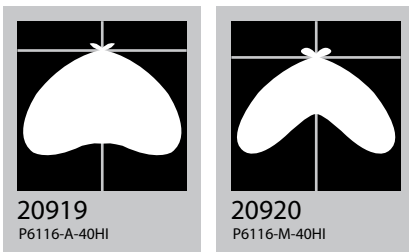
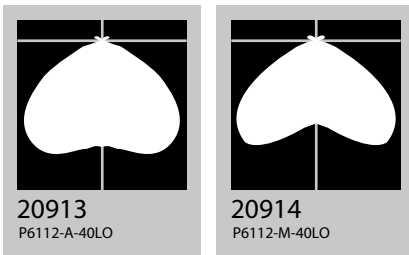
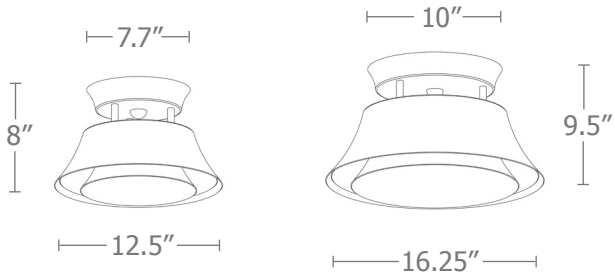
options

90CRI

premium finish

RAL specify RAL#

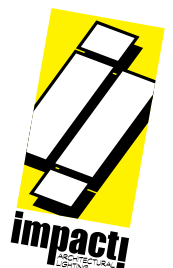




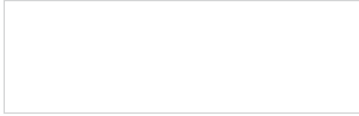
Cat No Delivered* Lumens **Watts** 120V / 277V **Amps** 120V 277V

Cat No	Delivered* Lumens	Watts 120V / 277V	Amps 120V	Amps 277V
C6112-A LO	1241	11	.08	.04
	ies file # 20913			
C6112-M LO	1001	11	.08	.04
	ies file # 20914			
C6112-A HI	2645	26	.19	.08
	ies file # 20915			
C6112-M HI	2147	26	.19	.08
	ies file # 20916			
C6116-A LO	2817	26	.19	.08
	ies file # 20917			
C6116-M LO	2120	26	.19	.08
	ies file # 20918			
C6116-A HI	3970	39	.28	.12
	ies file # 20919			
C6116-M HI	3008	39	.28	.12
	ies file # 20920			

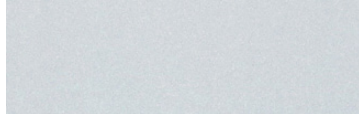
*delivered lumens based on 4000K, 80+ cri (90cri multiplier .83)



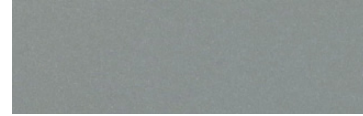
Powder Coat Paint Finishes



MW matte white



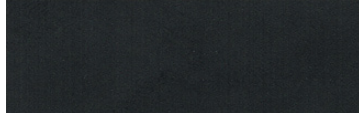
AP anodized paint



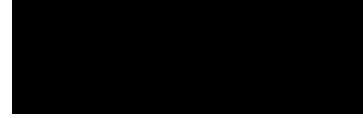
SS satin silver



TG textured gray



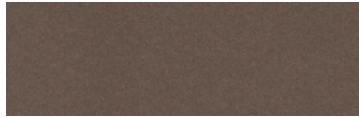
FB flat black



SB satin black



CP champagne



BZ bronze



GM gun metal



OR orange 2011



BU blue 5017



BS brass



RD red 3020



YO yellow 1018



MB military blue

For accurate color verification, actual finish samples are available upon request.

Premium Finishes*



RAL#

*Available on select series. Consult product submittal for availability.

