

job name:
 type:

fl.air™ spec sheet

material

housing

precision CNC spun .064" aluminum outer housing available in 21 standard powder coat paint finishes listed below.

diffuser

.125" Satinice WD855 light scattering, glare reduction acrylic. Colorless diffusion reduces CCT shift. 72% high light transmission.

LED

custom LED board in 3000K, 3500K, or 4000K (80+ cri standard) optional 90cri (see below). LEDs are rated >50,000 hours L70 (10K) at 85°C per LM-80 test data, and 70,000 hours projected life per IES TM-21. power cord color options listed below.

driver

in canopy, constant current, class P, class 2 power unit, class A sound rating, universal input (120-277V) programmable driver, 1% minimum dimming level, PF >0.90. protections include short circuit, input/output isolation and surge protection (3KV). wired for 0-10v dimming.

mounting

spun aluminum canopy painted to match fixture. three ultrathin vertical stainless steel cables and field adjustable grippers that allow for exact AFF mounting heights. cloth-covered power cord color options listed below. cord requires special stripping tool (link).

power over cable (optional)

Class 2 LED powered suspension system that suspends and powers the fixture with thin stainless steel copper-core conductive cables, providing a clean look without the need for a separate power cord. powered suspension requires cable cutter (link) specifically designed to cut stainless steel aircraft cable from 1/32" to 1/8".

finish

select from standard powder coat paint finishes or specify RAL# for custom colors.

emergency

if required, recommend use of inverter (by other).



catalog number

| | | | | |
|----------------------|----------------------|----------------------|----------------------|----------------------|
| <input type="text"/> | <input type="text"/> | <input type="text"/> | <input type="text"/> | <input type="text"/> |
|----------------------|----------------------|----------------------|----------------------|----------------------|

size

P5808
8.5"dia X 3"ht

P5812
12.5"dia X 4"ht

P5816
16.25"dia X 5.25 "ht

LED

30LO 3000K
30HI 3000K

35LO 3500K
35HI 3500K

40LO 4000K
40HI 4000K

painted finish

AP anodized paint
BS brass
BU blue
BZ bronze
CP champagne
FB flat black
GM gun metal
MB military blue
MW matte white
OR orange
RD red
SB satin black
SS satin silver
TG textured gray
YO yellow

premium finish

RAL specify RAL#

power cord

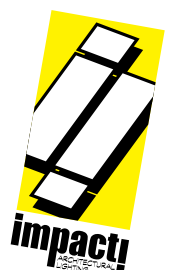
BUPC blue cloth cord
ORPC orange cloth cord
PLPC purple cloth cord
RDPC red cloth cord
WGPC white & gray dot cloth cord
POC power over cable

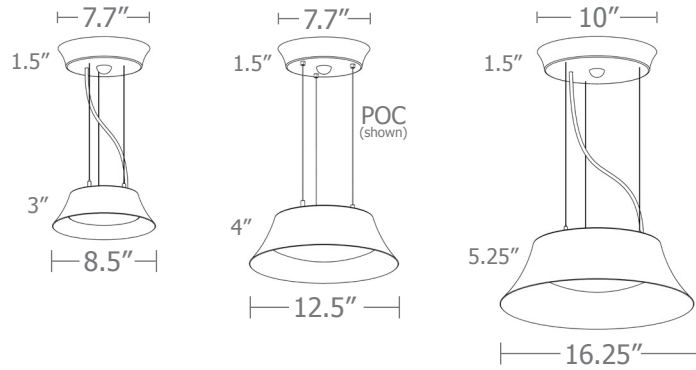
options

3FT 36" cables
6FT 72" cables
90CRI



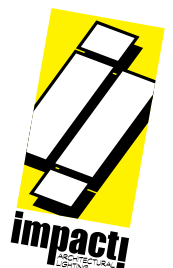
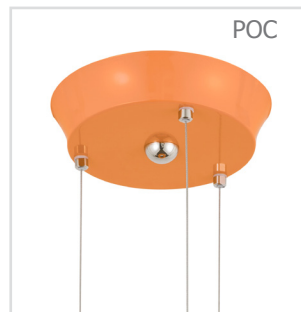
made in the
usa!



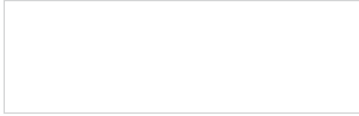


| Cat No | Delivered* Lumens | Watts | | Amps | |
|-----------------|----------------------|-------------|------|------|------|
| | | 120V / 277V | 120V | 277V | 277V |
| P5808 LO | 1015 | 11 | .09 | .04 | |
| | | | | | |
| P5808 HI | 2000 | 21 | .18 | .08 | |
| | | | | | |
| P5812 LO | 1515 | 17 | .14 | .06 | |
| | | | | | |
| P5812 HI | 3030 | 32 | .27 | .12 | |
| | | | | | |
| P5816 LO | 2000 | 22 | .18 | .08 | |
| | | | | | |
| P5816 HI | 4000 | 42 | .35 | .15 | |
| | | | | | |

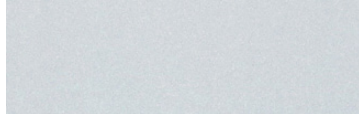
* delivered lumens based on 4000K, 80+ cri (90cri multiplier .83)



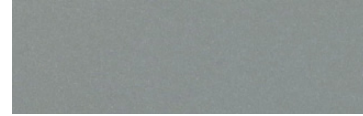
Powder Coat Paint Finishes



MW matte white



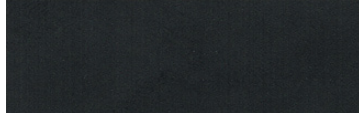
AP anodized paint



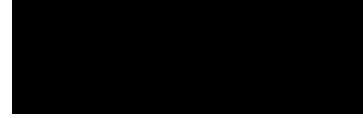
SS satin silver



TG textured gray



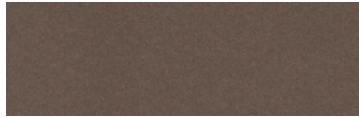
FB flat black



SB satin black



CP champagne



BZ bronze



GM gun metal



OR orange 2011



BU blue 5017



BS brass



RD red 3020



YO yellow 1018



MB military blue

For accurate color verification, actual finish samples are available upon request.

Premium Finishes*



RAL#

*Available on select series. Consult product submittal for availability.

