

job name:
 type:

na.row™ spec sheet

material
 smooth extruded aluminum outer housing in four lengths available in 21 standard powder coat paint finishes listed below.

LED
 COB in 2700K, 3000K, 3500K, or 4000K (80 cri standard) (90 cri optional) rated >36,000 hours L70 (6.8K) per LM-80 test data, and 71,000 hours projected life per IES TM-21.

driver
 in canopy, constant current, class P, class 2 power unit, class A sound rating, universal input (120-277V) programmable driver, 5% minimum dimming level, PF >0.90. protections include short circuit, input/output isolation and surge protection (3KV). wired for 0-10v dimming from factory.

mounting
 extruded aluminum canopy painted to match fixture. ultrathin vertical stainless steel cable and field adjustable gripper that allow for exact AFF mounting heights. cloth-covered power cord color options listed below. cord requires special stripping tool (link).

power over cable (optional)
 Class 2 LED powered suspension system that suspends and powers the fixture with thin stainless steel copper-core conductive cables, providing a clean look without the need for a separate power cord. powered suspension requires cable cutter (link) specifically designed to cut stainless steel aircraft cable from 1/32" to 1/8".

finish
 select from 21 standard powder coat paint finishes listed below or specify RAL# for custom colors.

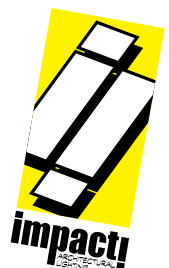
emergency
 if required, recommend use of inverter (by other).

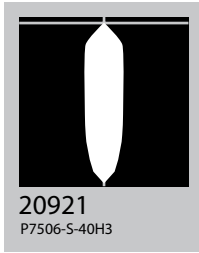
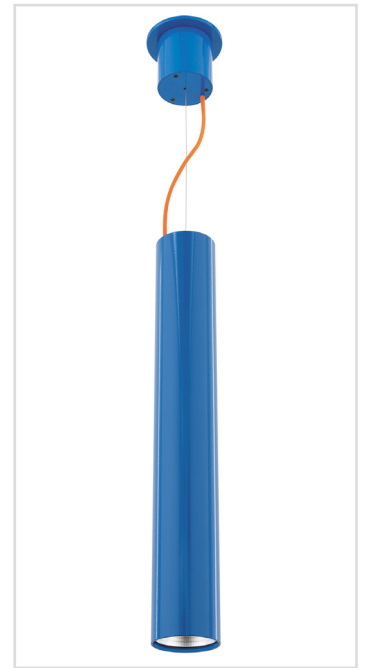
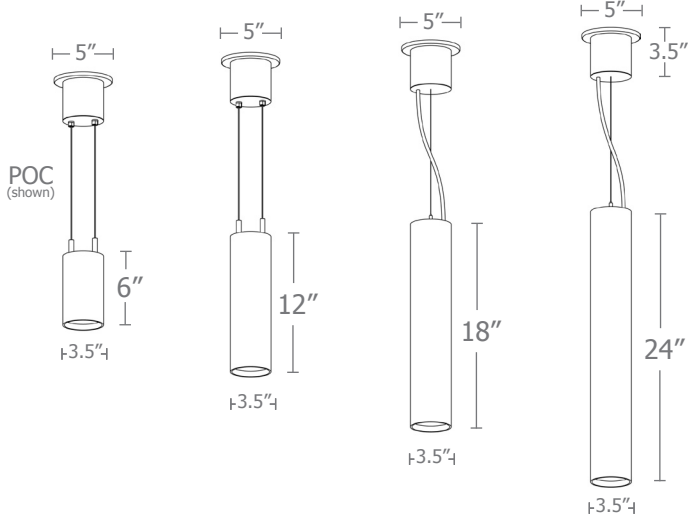


catalog number

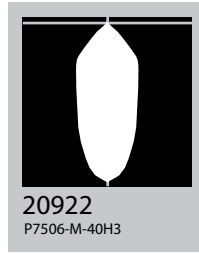
size	beam	CCT	lumens	standard finishes	power cord	options
P7606 3.5"dia X 6"ht	S 20° spot M 30° med W 50° wide	27 2700K 30 3000K	L1 450 lm L2 800 lm	AP anodized paint BN brown BR brick red BS brass BU blue BZ bronze CP champagne FB flat black GM gun metal GR green MB military blue MN mint MW matte white OR orange PL purple RD red SB satin black SS satin silver TG textured gray TW textured white YO yellow	BUPC blue cloth cord ORPC orange cloth cord PLPC purple cloth cord RDPC red cloth cord WGPC white & gray dot cloth cord POC power over cable	3FT 36" cables 6FT 72" cables 90CRI
P7612 3.5"dia X 12"ht	XW 90° extra wide	35 3500K 40 4000K	L3 1000 lm H1 1500 lm H2 2200 lm H3 3000 lm			
P7618 3.5"dia X 18"ht						
P7624 3.5"dia X 24"ht						

premium finish
 RAL specify RAL#

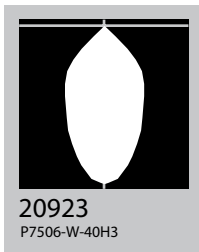




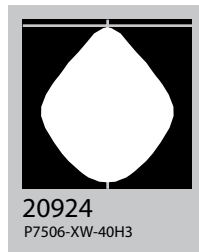
20921
P7506-S-40H3



20922
P7506-M-40H3



20923
P7506-W-40H3

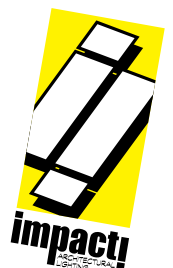


20924
P7506-XW-40H3

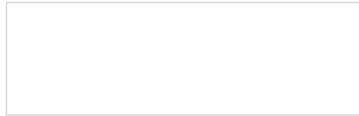
Cat No Delivered* Lumens **Watts** 120V / 277V **Amps** 120V 277V

Cat No	Delivered* Lumens	Watts 120V / 277V	Amps 120V	Amps 277V
L1	450	4	.03	.01
L2	800	7	.06	.03
L3	1000	10	.08	.04
H1	1500	14	.12	.05
H2	2200	20	.17	.07
H3	3000	29	.24	.10
	S 20° spot	M 20° med	W 20° wide	XW 20° extra
ies file #	20921	20922	20923	20924

*delivered lumens based on 4000K, 80+ cri (90cri multiplier .83)



Powder Coat Paint Finishes



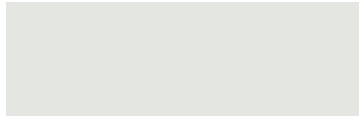
MW matte white



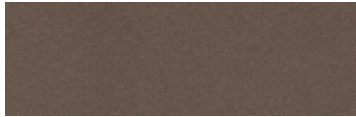
CP champagne



YO yellow 1018



TW textured white



BZ bronze



RD red 3020



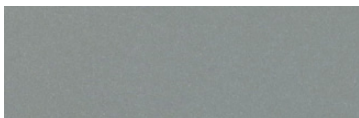
AP anodized paint



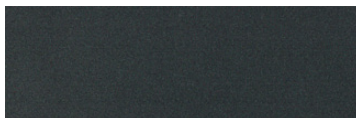
BS brass



BU blue 5017



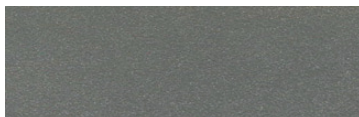
SS satin silver



GM gun metal



OR orange 2011



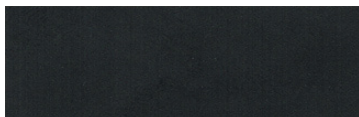
TG textured gray



BR brick red



MN mint 6019



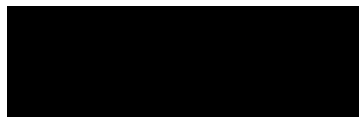
FB flat black



BN brown 8023



GR green 6018



SB satin black



MB military blue



PL purple 4005

For accurate color verification, actual finish samples are available upon request.

Premium Finishes*



RAL#

*Available on select series. Consult product submittal for availability.

