

job name:   
 type:

## na.row™ spec sheet

### material

smooth extruded aluminum outer housing in four lengths available in 21 standard powder coat paint finishes listed below.

### LED

COB in 2700K, 3000K, 3500K, or 4000K (80 cri standard) (90 cri optional) rated >36,000 hours L70 (6.8K) per LM-80 test data, and 71,000 hours projected life per IES TM-21.

### downlight optics

LEDiL® Angelina 82mm dia 31mm high (RoHS compliant) available in 20° spot, 30° medium, 50° wide with specular anodized finish. 90° extra wide features matte white highly reflective finish. color mixing sublens standard. standard mounting clamp allows for easy replacement of reflector in field. the typical total beam angle is the full angle measured where the luminous intensity is half of the peak volume.

### driver

in canopy, constant current, class P, class 2 power unit, class A sound rating, universal input (120-277V) programmable driver, 5% minimum dimming level, PF >0.90. protections include short circuit, input/output isolation and surge protection (3KV). wired for 0-10v dimming from factory.

### mounting

extruded aluminum canopy painted to match fixture. ultrathin vertical stainless steel cable and field adjustable gripper that allow for exact AFF mounting heights. cloth-covered power cord color options listed below. cord requires special stripping tool (link).

### power over cable (optional)

Class 2 LED powered suspension system that suspends and powers the fixture with thin stainless steel copper-core conductive cables, providing a clean look without the need for a separate power cord. powered suspension requires cable cutter (link) specifically designed to cut stainless steel aircraft cable from 1/32" to 1/8".

### finish

select from 21 standard powder coat paint finishes listed below or specify RAL# for custom colors.

### emergency

if required, recommend use of inverter (by other).

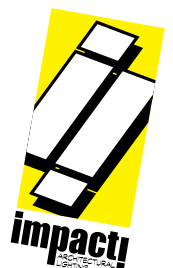


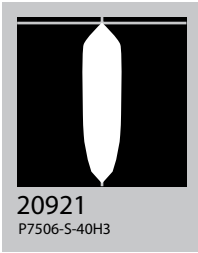
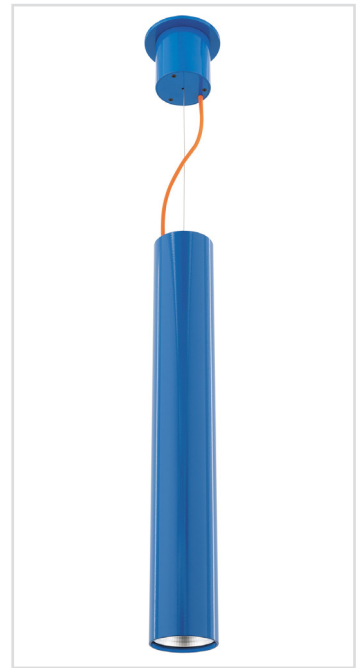
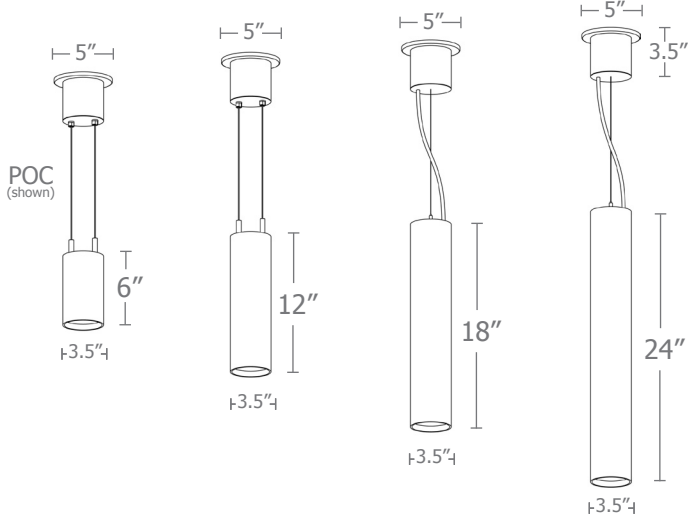
## catalog number

size	beam	CCT	lumens	standard finishes	power cord	options
<b>P7606</b> 3.5"dia X 6"ht	<b>S</b> 20° spot <b>M</b> 30° med <b>W</b> 50° wide	<b>27</b> 2700K <b>30</b> 3000K	<b>L1</b> 450 lm <b>L2</b> 800 lm	<b>AP</b> anodized paint <b>BN</b> brown <b>BR</b> brick red <b>BS</b> brass <b>BU</b> blue <b>BZ</b> bronze <b>CP</b> champagne <b>FB</b> flat black <b>GM</b> gun metal <b>GR</b> green <b>MB</b> military blue <b>MN</b> mint <b>MW</b> matte white <b>OR</b> orange <b>PL</b> purple <b>RD</b> red <b>SB</b> satin black <b>SS</b> satin silver <b>TG</b> textured gray <b>TW</b> textured white <b>YO</b> yellow	<b>BUPC</b> blue cloth cord <b>ORPC</b> orange cloth cord <b>PLPC</b> purple cloth cord <b>RDPC</b> red cloth cord <b>WGPC</b> white & gray dot cloth cord <b>POC</b> power over cable	<b>3FT</b> 36" cables <b>6FT</b> 72" cables <b>90CRI</b>
<b>P7612</b> 3.5"dia X 12"ht	<b>XW</b> 90° extra wide	<b>35</b> 3500K <b>40</b> 4000K	<b>L3</b> 1000 lm <b>H1</b> 1500 lm <b>H2</b> 2200 lm <b>H3</b> 3000 lm			
<b>P7618</b> 3.5"dia X 18"ht						
<b>P7624</b> 3.5"dia X 24"ht						

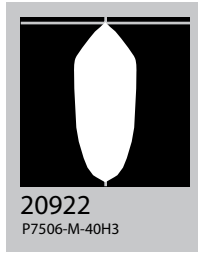
### premium finish

**RAL** specify RAL#

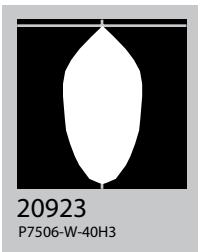




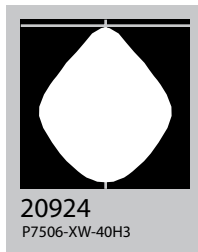
20921  
P7506-S-40H3



20922  
P7506-M-40H3



20923  
P7506-W-40H3

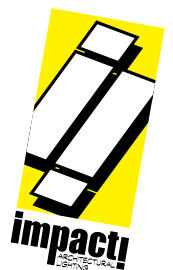


20924  
P7506-XW-40H3

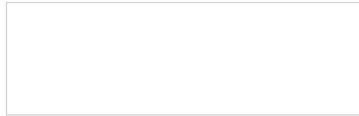
Cat No      Delivered\* Lumens      **Watts** 120V / 277V      **Amps** 120V      277V

Cat No	Delivered* Lumens	Watts 120V / 277V	Amps 120V	Amps 277V
L1	450	4	.03	.01
L2	800	7	.06	.03
L3	1000	10	.08	.04
H1	1500	14	.12	.05
H2	2200	20	.17	.07
H3	3000	29	.24	.10
	<b>S</b> 20° spot	<b>M</b> 30° med	<b>W</b> 50° wide	<b>XW</b> 90° extra
ies file #	20921	20922	20923	20924

\*delivered lumens based on 4000K, 80+ cri (90cri multiplier .83)



## Powder Coat Paint Finishes



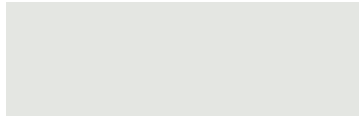
**MW** matte white



**CP** champagne



**YO** yellow 1018



**TW** textured white



**BZ** bronze



**RD** red 3020



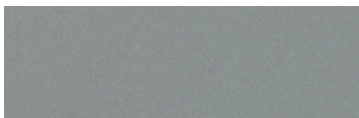
**AP** anodized paint



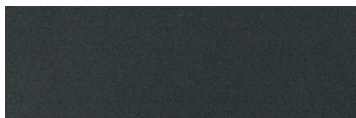
**BS** brass



**BU** blue 5017



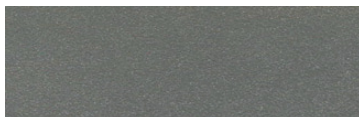
**SS** satin silver



**GM** gun metal



**OR** orange 2011



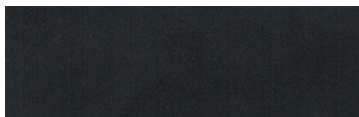
**TG** textured gray



**BR** brick red



**MN** mint 6019



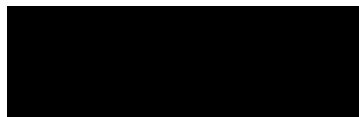
**FB** flat black



**BN** brown 8023



**GR** green 6018



**SB** satin black



**MB** military blue



**PL** purple 4005

For accurate color verification, actual finish samples are available upon request.

## Premium Finishes\*



**RAL#**

\*Available on select series. Consult product submittal for availability.

