

job name:
 type:

min|skrt™ spec sheet

material

housing

precision CNC spun .064" aluminum outer housing available in 21 standard powder coat paint finishes listed below.
 .060" aluminum liner powder coat painted high reflectance matte white.

diffuser

choose from .125" white acrylic or .064" spun aluminum powder coat painted high reflectance matte white.

LED

custom LED board in 3000K, 3500K, or 4000K (80+ cri standard) optional 90cri (see below). LEDs are rated >50,000 hours L70 (10K) at 85°C per LM-80 test data, and 70,000 hours projected life per IES TM-21. power cord color options listed below.

driver

in canopy, constant current, class P class 2 power unit, class A sound rating, universal input (120-277V) programmable driver, 1% minimum dimming level, PF >0.90. protections include short circuit, input/output isolation and surge protection (3KV). wired for 0-10v dimming from factory.

mounting

spun aluminum canopy painted to match fixture. three ultrathin vertical stainless steel cables and field adjustable grippers that allow for exact AFF mounting heights. cloth-covered power cord color options listed below. cord requires special stripping tool (link).

power over cable (optional)

Class 2 LED powered suspension system that suspends and powers the fixture with thin stainless steel copper-core conductive cables, providing a clean look without the need for a separate power cord. powered suspension requires cable cutter (link) specifically designed to cut stainless steel aircraft cable from 1/32" to 1/8".

finish

select from standard powder coat paint finishes or specify RAL# for custom colors.

emergency

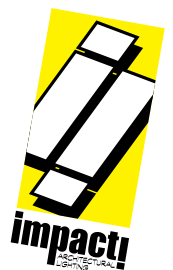
if required, recommend use of inverter (by other).

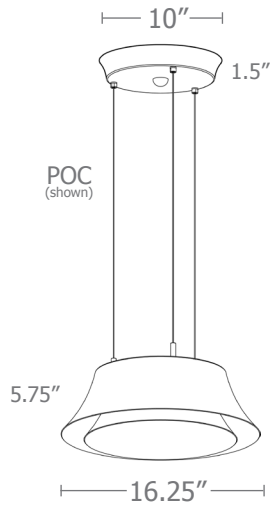
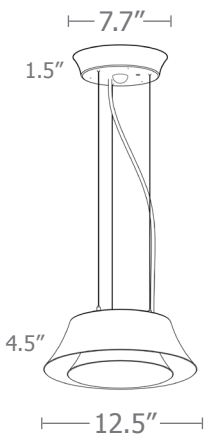


catalog number

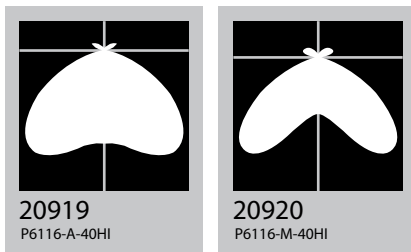
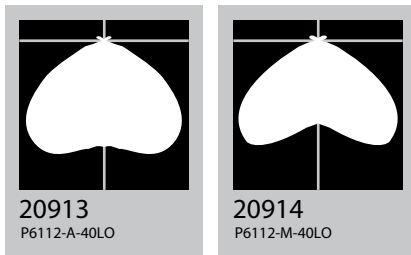
| | | | | | |
|----------------------|----------------------|----------------------|----------------------|----------------------|----------------------|
| <input type="text"/> | <input type="text"/> | <input type="text"/> | <input type="text"/> | <input type="text"/> | <input type="text"/> |
|----------------------|----------------------|----------------------|----------------------|----------------------|----------------------|

| size | diffuser | LED | painting finish | power cord | options |
|-------------------------------------|------------------------------------|--|--|---|--|
| P6112 12.5"dia X 4.5"ht | A acrylic M metal | 30LO 3000K 30HI 3000K 35LO 3500K 35HI 3500K 40LO 4000K 40HI 4000K | AP anodized paint BS brass BU blue BZ bronze CP champagne FB flat black GM gun metal MB military blue MW matte white OR orange RD red SB satin black SS satin silver TG textured gray YO yellow | BUPC blue cloth cord ORPC orange cloth cord PLPC purple cloth cord RDPC red cloth cord WGPC white & gray dot cloth cord POC power over cable | 3FT 36" cables 6FT 72" cables 90CRI |
| P6116 16.25"dia X 5.75"ht | | | premium finish RAL specify RAL# | | |



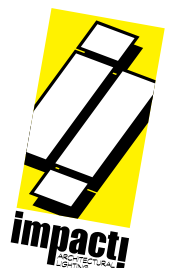


colored cloth cord

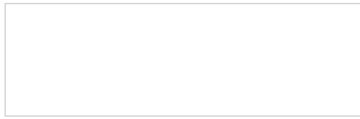


| Cat No | Delivered* Lumens | Watts | | Amps | |
|-------------------|----------------------|-------------|------|------|------|
| | | 120V / 277V | 120V | 277V | 277V |
| P6112-A LO | 1241 | 11 | .08 | .04 | |
| | ies file # 20913 | | | | |
| P6112-M LO | 1001 | 11 | .08 | .04 | |
| | ies file # 20914 | | | | |
| P6112-A HI | 2645 | 26 | .19 | .08 | |
| | ies file # 20915 | | | | |
| P6112-M HI | 2147 | 26 | .19 | .08 | |
| | ies file # 20916 | | | | |
| P6116-A LO | 2817 | 26 | .19 | .08 | |
| | ies file # 20917 | | | | |
| P6116-M LO | 2120 | 26 | .19 | .08 | |
| | ies file # 20918 | | | | |
| P6116-A HI | 3970 | 39 | .28 | .12 | |
| | ies file # 20919 | | | | |
| P6116-M HI | 3008 | 39 | .28 | .12 | |
| | ies file # 20920 | | | | |

*delivered lumens based on 4000K, 80+ cri (90cri multiplier .83)



Powder Coat Paint Finishes



MW matte white



AP anodized paint



SS satin silver



TG textured gray



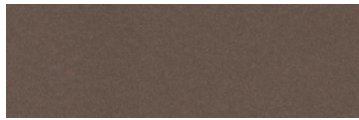
FB flat black



SB satin black



CP champagne



BZ bronze



GM gun metal



OR orange 2011



BU blue 5017



BS brass



RD red 3020



YO yellow 1018



MB military blue

For accurate color verification, actual finish samples are available upon request.

Premium Finishes*



RAL#

*Available on select series. Consult product submittal for availability.

