

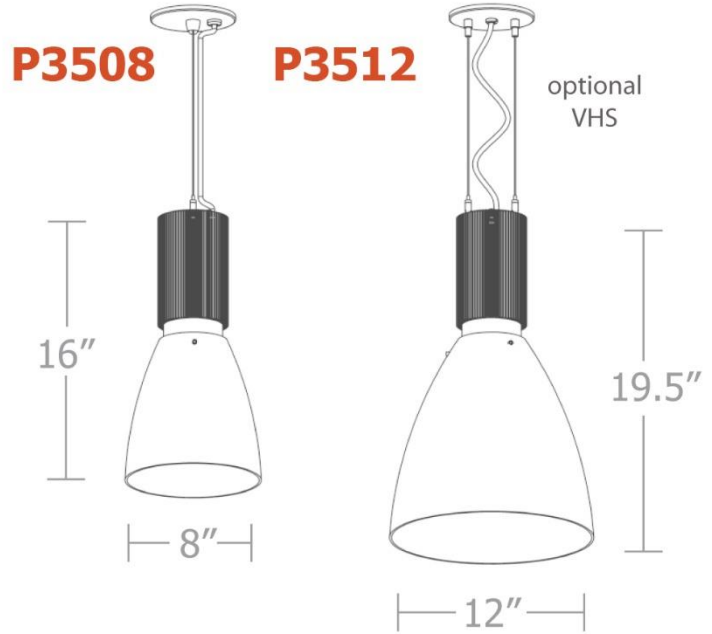


imago™ 5-slider

your lighting rep has recommended the **imago™** pendant for your project
Let's take a quick look:



sizes and lumens



- P3508 (8") / 1535 – 3790 lm
- P3512 (12") / 1535 – 3790 lm



construction

integral programmable driver,
constant current , universal input
(120-277v), field maintainable,
0-10v controllable to 1% dimming.

2 anodized finishes + 12 standard
powder coat paint finishes + custom
RAL colors

single COB LED module in **90+ CRI** standard
2700K, 3000K, 3500K and 4000K.

.25" open bottom parabolic
acrylic diffuser



5" dia. spun steel canopy with
single or dual field adjustable
stainless-steel cables

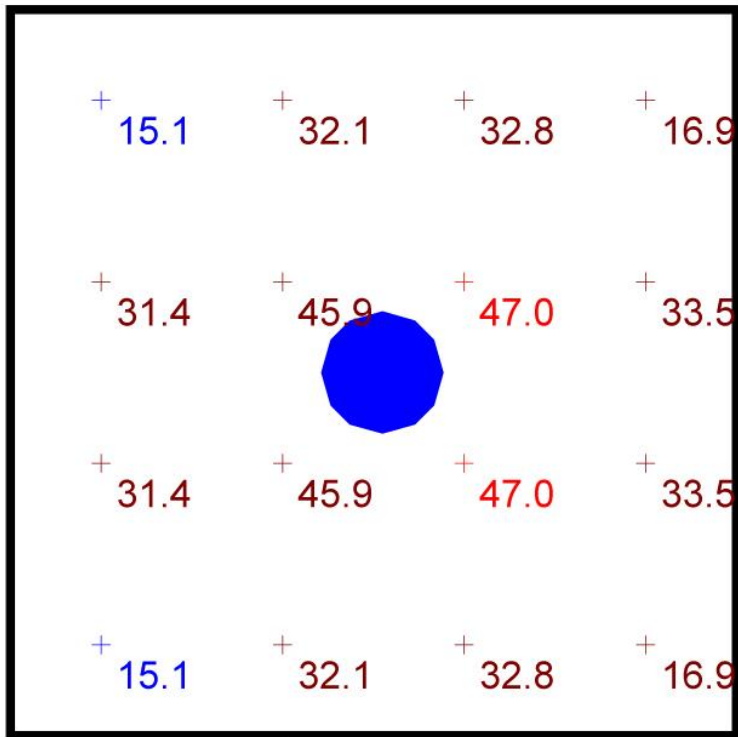
(POC) power over cable suspension
system option provides a clean look
without the need for a separate power
cord

optional colored cloth power cord in
blue, orange, purple, red, or white
& gray dot

optional frosted acrylic bottom lens, solvent
welded to bottom of parabolic diffuser

performance

Statistics						
Description	Symbol	Avg	Max	Min	Max/Min	Avg/Min
imago	+	31.8 fc	47.0 fc	15.1 fc	3.1:1	2.1:1



Plan View
Scale - 1" = 2ft

- 10' x 10' x 12'H space
- 80/50/20 reflectances
- bottom of fixture at 10' aff
- FC readings at 2.5' aff
- layout conducted using P3512 unit with HX lumen 90cri package providing 3790 delivered lumens





www.impactltg.com

- spec sheet and color chart
- photometric files and BIM models
- built to order in Saint Louis, MO, USA
- 4-week lead time

imago™ 5-slider

