



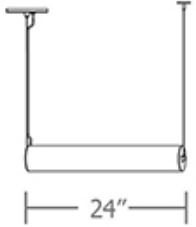
i.rod.4.hrz™ 5-slider

your lighting rep has
recommended the **i.rod.4.hrz™**
cylinder pendant for your project
Let's take a quick look:

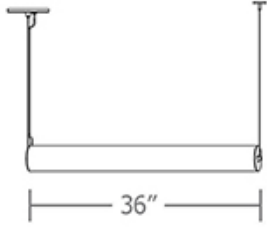


sizes and lumens

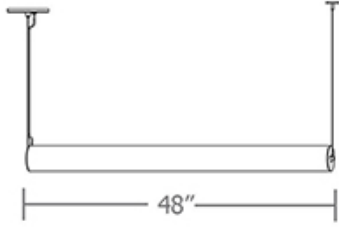
P9224



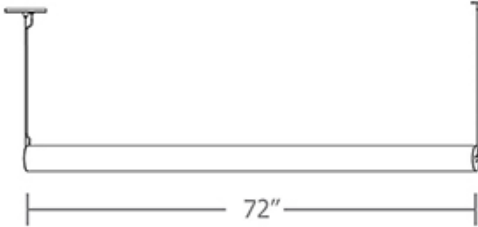
P9236



P9248



P9272



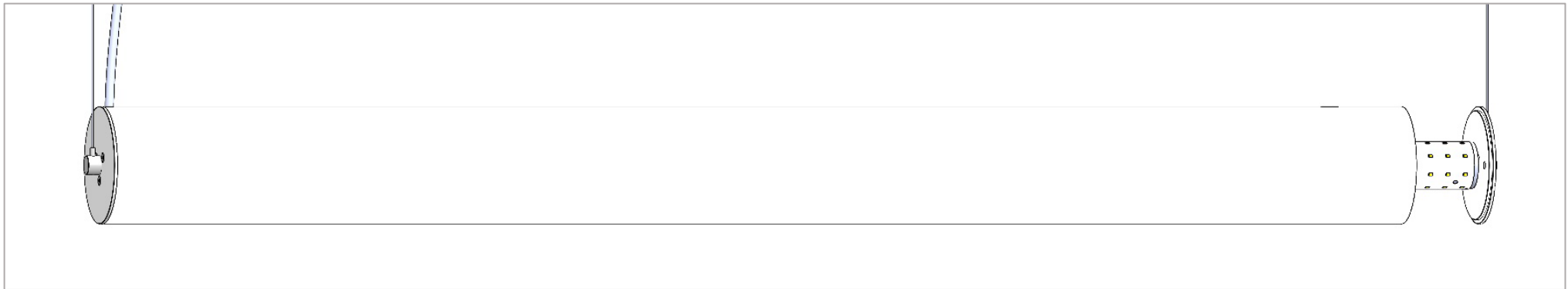
- P9224 (2ft) / 940 – 3200 lm
- P9236 (3ft) / 1880 – 3750 lm
- P9248 (4ft) / 1000 – 6450 lm
- P9272 (6ft) / 3000 – 9100 lm



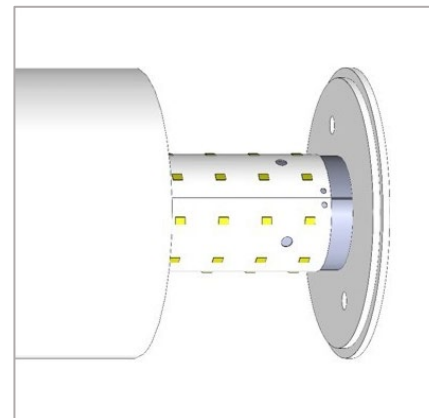
construction

driver in remote enclosure,
constant current, field
maintainable, universal input (120-
277v), 0-10v controllable to 1%
dimming

mounts to 5" dia. steel canopy in matte
white finish. 2-pt 3ft/6ft stainless steel
cables, adjustable grippers allow for exact
desired mounting height. non power feed
leg has 2" matte white canopy.



end caps: comprised of two graduated
diameter .100" thk aluminum plates in
matte white, designed to center acrylic
and block light leaks

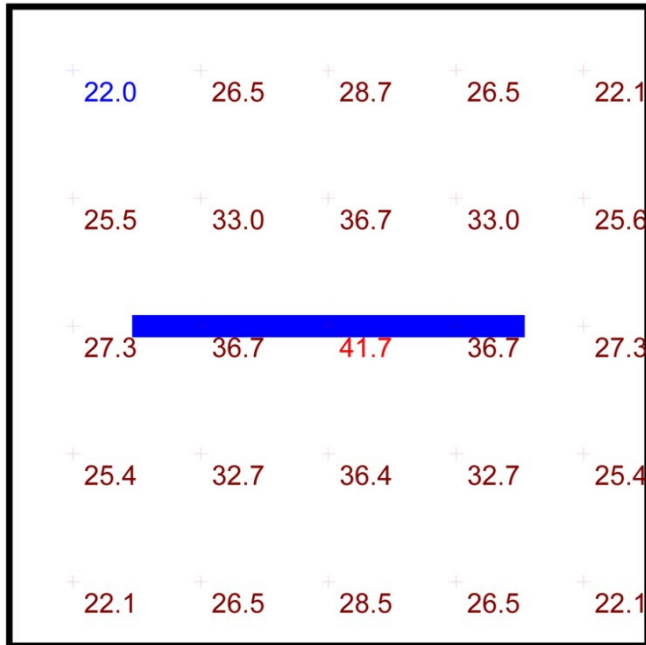


90 cri flexible planar LED
lighting sheet wrapped
around extruded
aluminum core provides
totally even luminance

performance

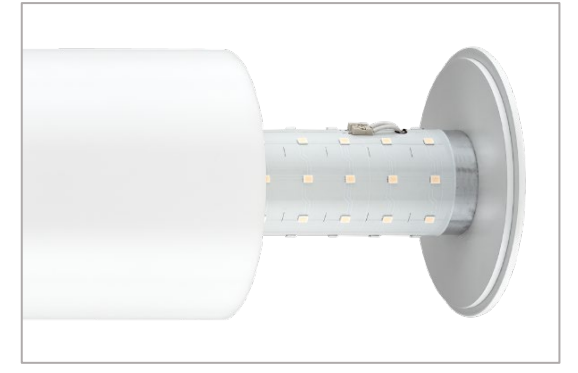
Statistics

Description	Symbol	Avg	Max	Min	Max/Min	Avg/Min
i.rod.4.hrz	+	29.1 fc	41.7 fc	22.0 fc	1.9:1	1.3:1



- 10' x 10' x 10'H space
- 80/50/20 reflectances
- bottom of fixture at 8' aff
- FC readings at 2.5' aff
- layout conducted using **90 cri P9272-HX** 7500 lumens output unit





www.impactltg.com

- spec sheet and color chart
- photometric files and BIM models
- built to order in Saint Louis, MO, USA
- 4-week lead time

i.rod.4.hrz™ 5-slider

