

job name:
 type:

glo.stk™ spec sheet

material

end caps

precision CNC spun .063" aluminum. select from a variety of finishes listed below.

LED

body illumination

Heilux LumaFilm® flexible planar LED lighting sheet in 3000K, 3500K, or 4000K (85CRI), utilizing emitters rated at >77,000hrs L70 per TM21-11 from LM80 data. (90 CRI, please contact factory). white power cord is standard with other color options listed below.

downlight

Bridgelux Vero series in 3000K, 3500K, or 4000K (80CRI), with rated life of >50,000hrs L70 per IES TM21. (90 CRI, please contact factory).

driver

in canopy, class 2, universal input (120-277v), constant current, 0-10v dimming, 1% minimum dimming level, PF > .9, THD <20%, protections include open and short circuit, overload and over temperature.

diffuser

8" dia. .100" virgin white acrylic cylinder.

mounting

10" dia. spun steel canopy in matte white. three vertical 12ft stainless steel cables and field adjustable grippers that allow for exact AFF mounting heights.

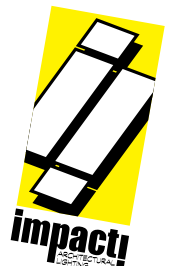
emergency

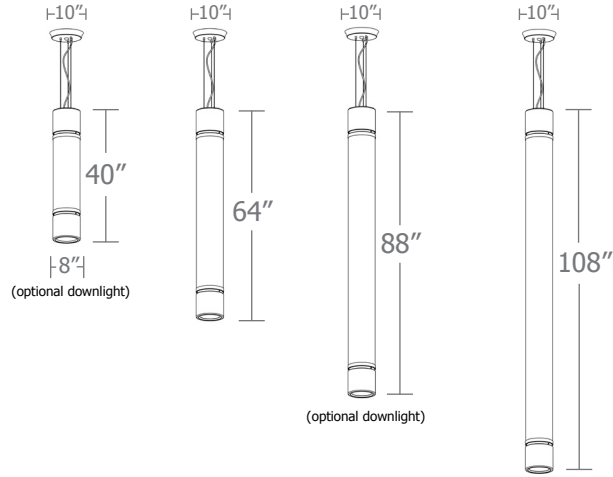
if required, recommend use of inverter (by other).



catalog number

size	body illumination	downlight	finish	options
P9540 8"dia X 40"ht	30LO 3000K 30HI 3000K	NDL no downlight 30DL 3000K	AP anodized paint BN brown BR brick red BS brass BU blue BZ bronze CP champagne FB flat black GM gun metal GR green MB military blue MN mint MW matte white OR orange PL purple RD red SB satin black SS satin silver TG textured gray TW textured white YO yellow	BKPC Black power cord and canopy SBPC Silver braid power cord and white canopy
P9564 8"dia X 64"ht	35LO 3500K 35HI 3500K	35DL 3500K 40DL 4000K	BA brushed aluminum RAL specify RAL#	
P9588 8"dia X 88"ht	40LO 4000K 40HI 4000K			
P95108 8"dia X 108"ht	(see page 2 for delivered lumens)			

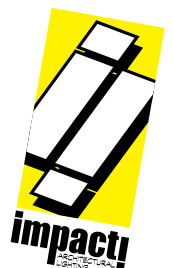
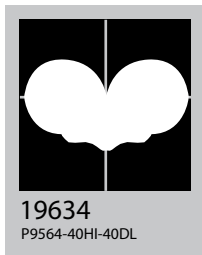
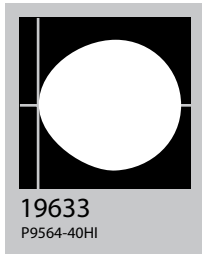




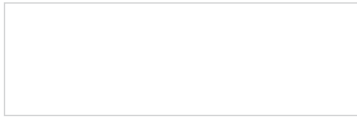
Watts **Amps**

Cat No **Delivered Lumens** **120V** **277V** **120V** **277V**

Cat No	Delivered Lumens	120V	277V	120V	277V
P9540 LO		15	15	0.12	0.05
4000K	1368				
3500K	1286				
3000K	1177				
P9540 HI		19	19	0.16	0.07
4000K	1774				
3500K	1667				
3000K	1525				
P9564 LO		29	29	0.24	0.10
4000K	2838				
3500K	2668				
3000K	2441				
P9564 HI		51	51	0.43	0.19
4000K	5068	ies file # 19633 & 19634			
3500K	4764				
3000K	4358				
P9588 LO		43	43	0.36	0.15
4000K	4257				
3500K	4002				
3000K	3661				
P9588 HI		68	68	0.57	0.25
4000K	6791				
3500K	6384				
3000K	5840				
P95108 LO		52	52	.43	.19
4000K	4865				
3500K	4573				
3000K	4184				
P95108 HI		77	77	.64	.28
4000K	7247				
3500K	6812				
3000K	6233				
Downlight		20	20	.17	.07
4000K	1060				
3500K	996				
3000K	912				



Powder Coat Paint Finishes



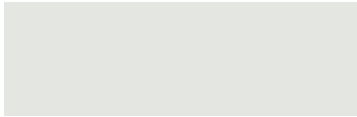
MW matte white



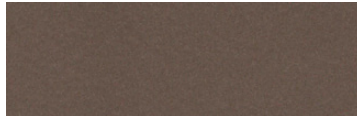
CP champagne



YO yellow 1018



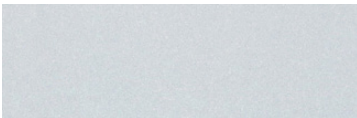
TW textured white



BZ bronze



RD red 3020



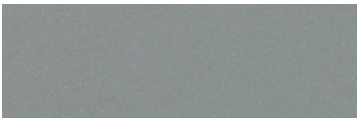
AP anodized paint



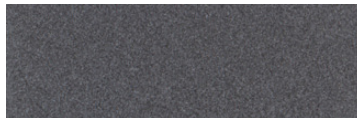
BS brass



BU blue 5017



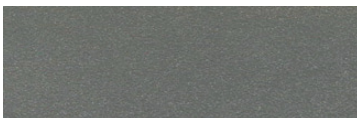
SS satin silver



GM gun metal



OR orange 2011



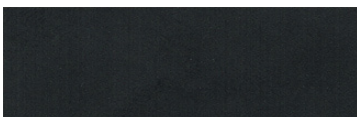
TG textured gray



BR brick red



MN mint 6019



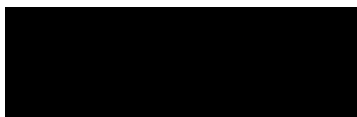
FB flat black



BN brown 8023



GR green 6018



SB satin black



MB military blue



PL purple 4005

For accurate color verification, actual finish samples are available upon request.

Premium Finishes*



BA brushed aluminum



RAL#

*Available on select series. Consult product submittal for availability.

