

job name:
 type:

n.r.20ob™ spec sheet

material

trim ring

precision CNC spun .063" aluminum. rolled top edge for added strength.

diffuser

.125" virgin white acrylic inner lens.

optics

reflector

22 gauge aluminum powder coat painted high reflectance matte white.

LED

custom LED board in 3000K, 3500K, or 4000K (80+ cri standard) optional 90cri (see below). under normal operating conditions, the LEDs employed are rated for >50,000hrs L70 (6.8K) per IES TM-21 from LM-80 test data. white power cord is standard with other color options listed below.

driver

integral, programmable, UL class P, class 2, universal input (120-277v), constant current, 0-10v dimming, 1% minimum dimming level, PF >.9, THD <20%, protections include open and short circuit, overload and over temperature.

mounting

5"dia. spun steel canopy in satin white. four point vertical suspension of 12 ft long stainless steel cables attach to trim with field adjustable grippers that allow for exact AFF mounting heights. optional quadpod to single point cable suspension, with sloped ceiling adapter.

emergency

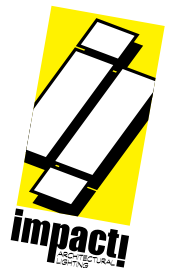
recommend use of inverter (by other).

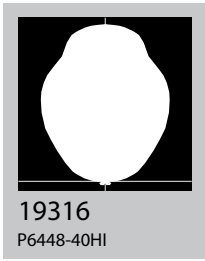
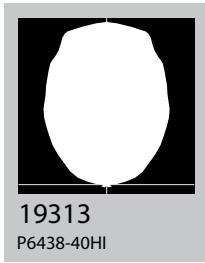
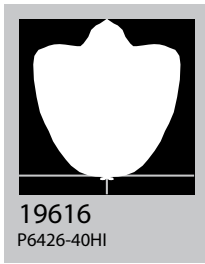
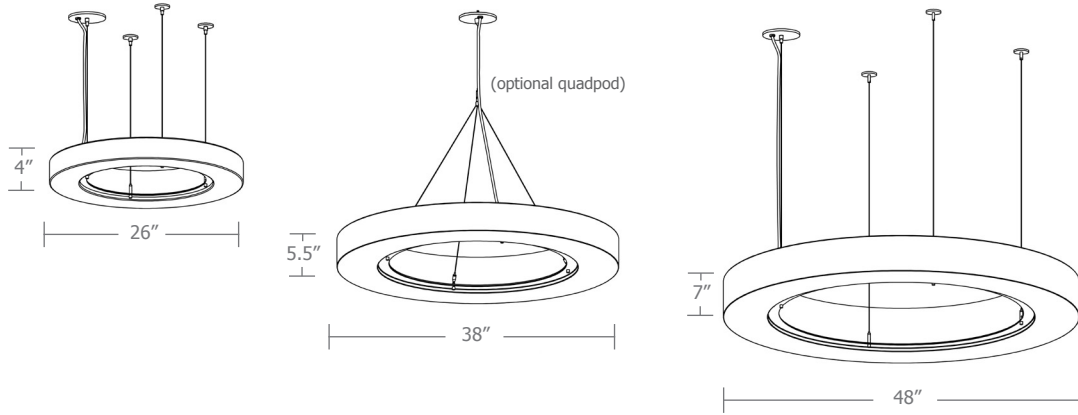


catalog number

--	--	--	--

size	LED array	finish	options
P6426 (2ft) 26"dia X 4"ht	30FX 3000K	AP anodized paint	90CRI
	30LO 3000K	BN brown	QPD Quadpod hanging system
P6438 (3ft) 38"dia X 5.5"ht	30HI 3000K	BR brick red	SBPC Silver braid power cord and white canopy
	35FX 3500K	BS brass	WREM wired for remote EM battery pack (by other) (see note above)
P6448 (4ft) 48"dia X 7"ht	35LO 3500K	BU blue	
	35HI 3500K	BZ bronze	
	40FX 4000K	CP champagne	
	40LO 4000K	FB flat black	
	40HI 4000K	GM gun metal	
	CL xxxx lm custom lumens consult factory	GR green	
		MB military blue	
		MN mint	
		MW matte white	
		OR orange	
		PL purple	
		RD red	
		SB satin black	
		SS satin silver	
		TG textured gray	
		TW textured white	
		YO yellow	
		premium finish	
		BA brushed aluminum	
		RAL specify RAL#	

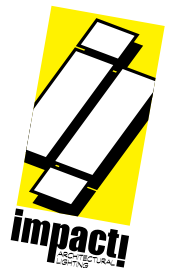




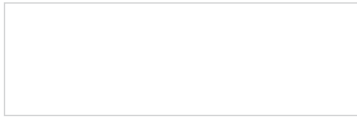
Cat No **Delivered*** **Watts** **Amps**
Lumens **120V / 277V** **120V** **277V**

Cat No	Delivered* Lumens	Watts 120V / 277V	Amps 120V	Amps 277V
P6426 FX				
P6426 LO	3838	29	.24	.10
P6426 HI	7147	54	.45	.19
	ies file # 19616			
P6438 FX				
P6438 LO	3902	33.5	.28	.12
P6438 HI	7571	71.6	.60	.26
	ies file # 19313			
P6448 FX				
P6448 LO	6838	53.4	.45	.19
P6448 HI	11242	96.1	.80	.35
	ies file # 19316			

*delivered lumens based on 4000K, 80+ cri
(90cri multiplier .83)



Powder Coat Paint Finishes



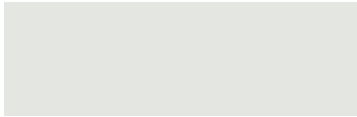
MW matte white



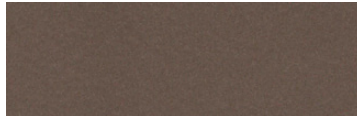
CP champagne



YO yellow 1018



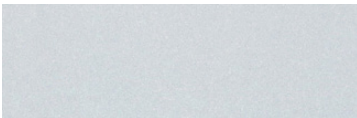
TW textured white



BZ bronze



RD red 3020



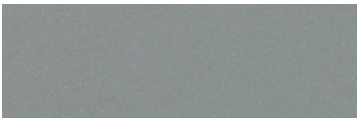
AP anodized paint



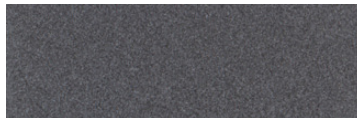
BS brass



BU blue 5017



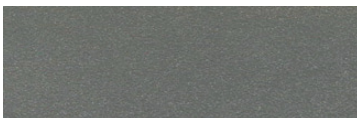
SS satin silver



GM gun metal



OR orange 2011



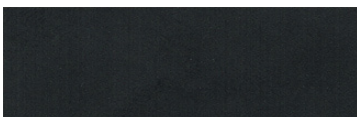
TG textured gray



BR brick red



MN mint 6019



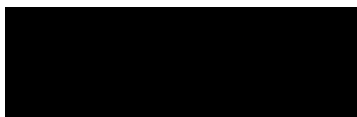
FB flat black



BN brown 8023



GR green 6018



SB satin black



MB military blue



PL purple 4005

For accurate color verification, actual finish samples are available upon request.

Premium Finishes*



BA brushed aluminum



RAL#

*Available on select series. Consult product submittal for availability.

