

job name:
 type:

flt.maxx™ ceiling spec sheet

material

trim ring
 precision CNC spun .063" aluminum. rolled bottom edge for added strength.

diffuser
 .187" virgin matte white acrylic drop lens held in place with allen key set screws recessed into trim ring.

optics

reflector
 .050" aluminum array platform painted high reflectance (>92%) matte white powder coat.

LED

custom LED board in 3000K, 3500K, or 4000K (80+ cri standard) optional 90cri (see below). under normal operating conditions, the LEDs employed are rated for >50,000hrs L70 (6.8K) per IES TM-21 from LM-80 test data. white power cord is standard with other color options listed below.

driver

integral, programmable, UL class P, class 2, universal input (120-277v), constant current, 0-10v dimming, 1% minimum dimming level, PF >.9, THD <20%, protections include open and short circuit, overload and over temperature.

mounting

designed to mount to 4 inch octagon junction box (by other). consult factory for installation instructions.

emergency

recommend use of inverter (by other).



catalog number

| | | | |
|--|--|--|--|
| | | | |
|--|--|--|--|

size

C7826
 (2ft) 26"dia X 4.75"ht

C7838
 (3ft) 38"dia X 6.5"ht

LED array

30FX 3000K

30LO 3000K

30HI 3000K

35FX 3500K

35LO 3500K

35HI 3500K

40FX 4000K

40LO 4000K

40HI 4000K

CL xxxx lm
 custom lumens
 consult factory

finish

AP anodized paint

BN brown

BR brick red

BS brass

BU blue

BZ bronze

CP champagne

FB flat black

GM gun metal

GR green

MB military blue

MN mint

MW matte white

OR orange

PL purple

RD red

SB satin black

SS satin silver

TG textured gray

TW textured white

YO yellow

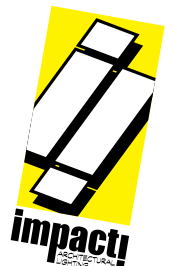
premium finish

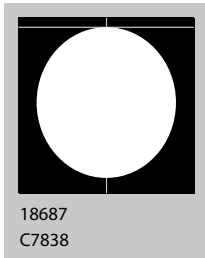
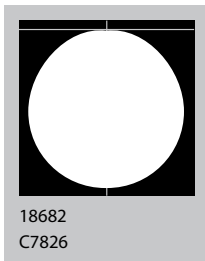
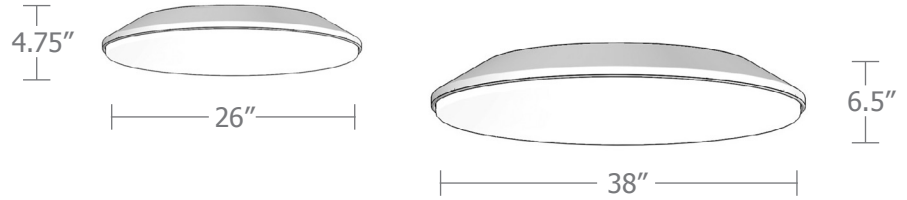
BA brushed aluminum

RAL specify RAL#

options

90CRI

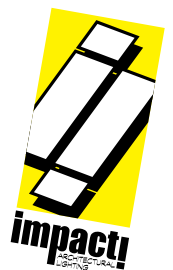




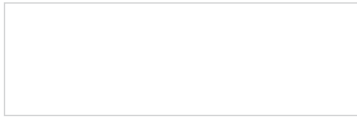
| Cat No | Delivered* Lumens | Watts | | Amps | |
|-----------------|----------------------|--------------------------------|------|------|--|
| | | 120V / 277V | 120V | 277V | |
| C7826 FX | 2340 | 28 | 0.23 | 0.10 | |
| C7826 LO | 4680 | 57 | .48 | .21 | |
| C7826 HI | 7020 | 85 | .71 | .31 | |
| | | ies file # 18685 (no top lens) | | | |
| C7838 FX | 4180 | 50 | .42 | .18 | |
| C7838 LO | 8360 | 101 | .84 | .36 | |
| | | ies file # 18688 (no top lens) | | | |
| C7838 HI | 13370 | 162 | 1.35 | .58 | |
| | | ies file # 18689 (no top lens) | | | |

*delivered lumens based on 4000K, 80+ cri (90cri multiplier .83)

* consult factory for indirect lumens



Powder Coat Paint Finishes



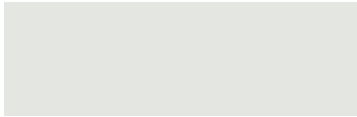
MW matte white



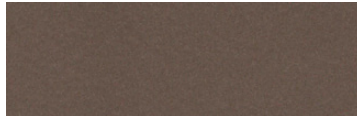
CP champagne



YO yellow 1018



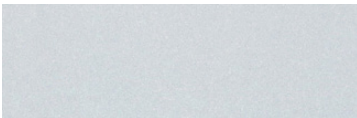
TW textured white



BZ bronze



RD red 3020



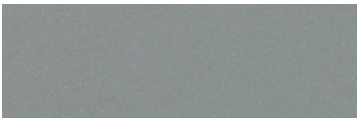
AP anodized paint



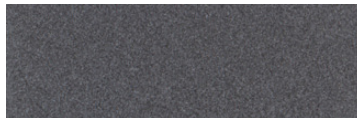
BS brass



BU blue 5017



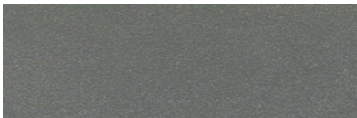
SS satin silver



GM gun metal



OR orange 2011



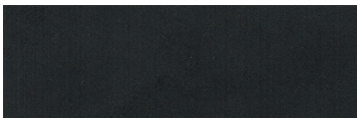
TG textured gray



BR brick red



MN mint 6019



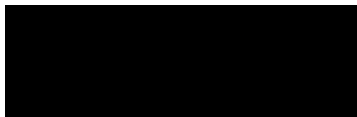
FB flat black



BN brown 8023



GR green 6018



SB satin black



MB military blue



PL purple 4005

For accurate color verification, actual finish samples are available upon request.

Premium Finishes*



BA brushed aluminum



RAL#

*Available on select series. Consult product submittal for availability.

