

job name:
 type:

bul.it™ LED ceiling spec sheet

material

housing

precision CNC spun .063" aluminum parabolic housing with rolled bottom edge for added strength and matte anodized finish standard. optional powder coat paint finishes.

array platform

.080" spun aluminum powder coat painted matte white.

bottom lens (optional)

.125" P95 frosted acrylic concave dome with 3 finger holes. recesses slightly into fixture.

optics

.050" spun aluminum conical reflector finished in high reflectance (>92%) matte white powder coat.

efficiency

constant current driver operates LED consistently, regulating the current flow through it to produce the most consistent light output and efficiency. constant current driver protects LEDs from voltage fluctuations in the building power system, eliminating stress from over voltage, inrush surges, and flicker from voltage fluctuations, assuring long service life.

LED

BCOB array in 3000K, 3500K, or 4000K (80 cri). under normal operating conditions, the LEDs employed are rated for >36,000hrs L70 (6.8K) per IES TM-21 from LM-80 test data, and 71,000hrs L70 projected life.

driver

Thomas Research LED-40W series, class 2 power unit, universal input (120-277 vac), 10% minimum dimming level, PF >.90, THD <20% at full load, >418khrs MTBF, protections include short circuit, over current, over voltage. Built-in 1-10v dimming. Specify under options.

mounting

designed to mount to 4 inch octagon junction box (by other). consult factory for installation instructions.

finish

standard is silver anodized finish. optionally, select from standard powder coat paint finishes or specify RAL# for custom colors.

emergency

emergency not available. if required, recommend use of inverter (by other).



catalog number

--	--	--	--

size

C3312
12"dia X 13.75"ht

C3316
16"dia X 16.5"ht

LED array

30LO 3000K

30HI 3000K

35LO 3500K

35HI 3500K

40LO 4000K

40HI 4000K

standard finish

AN silver anodized

painted finishes

BR brick red

BU blue

BZ bronze

CP champagne

MB military blue

MN mint

MW matte white

OR orange

RD red

SB satin black

SS satin silver

TG textured gray

TW textured white

YO yellow

premium finish

RAL specify RAL#

options

BL Bottom lens

DRA amber decorative ring

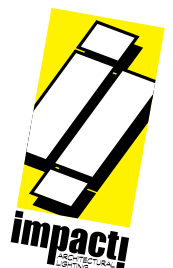
DRB blue decorative ring

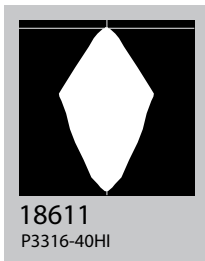
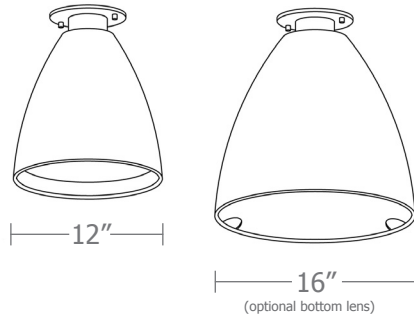
DRF frost decorative ring

DRG green decorative ring

DRR red decorative ring

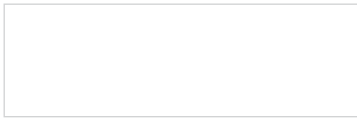
DRY yellow decorative ring





Cat No	Delivered Lumens	Watts		Amps	
		120V	277V	120V	277V
C3312 LO		38	38	0.32	0.14
4000K	2770				
3500K	2597				
3000K	2073				
C3312 HI		45	45	0.38	0.16
4000K	3304				
3500K	3098				
3000K	2473				
C3316 LO		38	38	0.32	0.14
4000K	2770				
3500K	2597				
3000K	2073				
C3316 HI		45	45	0.38	0.16
4000K	3304				
3500K	3098				
3000K	2473				

Powder Coat Paint Finishes



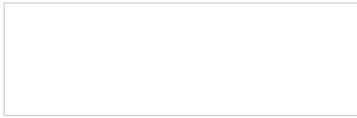
MW matte white



SB satin black



YO yellow 1018



TW textured white



CP champagne



RD red 3020



BZ bronze



BU blue 5017



SS satin silver



BR brick red



OR orange 2011



TG textured gray



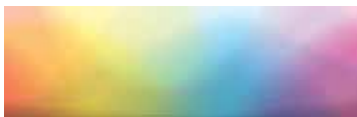
MB military blue



MN mint 6019

For accurate color verification, actual finish samples are available upon request.

Premium Finishes*



RAL#

For accurate color verification, actual finish samples are available upon request.

*Available on select series. Consult product spec sheet for availability.

