

job name:   
 type:

## flt.maxx™ spec sheet

### material

#### trim ring

precision CNC spun .063" aluminum. rolled bottom edge for added strength.

#### diffuser

.187" virgin matte white acrylic drop lens held in place with allen key set screws recessed into trim ring.

#### top lens

.125" vibrant gloss acrylic, available in a variety of colors and white. subtle glow.

### optics

#### reflector

.050" aluminum array platform painted high reflectance (>92%) matte white powder coat provides 90% downlight.

### LED

custom LED board in 3000K, 3500K, or 4000K (80+ cri standard) optional 90cri (see below). under normal operating conditions, the LEDs employed are rated for >50,000hrs L70 (6.8K) per IES TM-21 from LM-80 test data. white power cord is standard with other color options listed below.

### driver

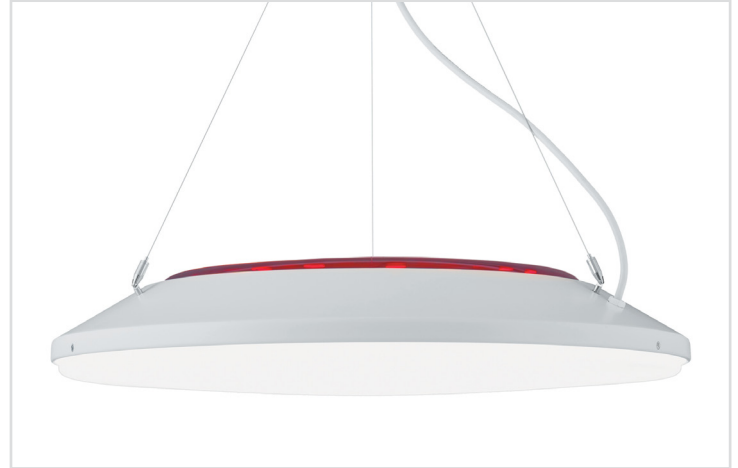
integral, programmable, UL class P, class 2, universal input (120-277v), constant current, 0-10v dimming, 1% minimum dimming level, PF >.9, THD <20%, protections include open and short circuit, overload and over temperature.

### mounting

5" dia. spun steel canopy in satin white is designed to mount to a 4" octagon junction box (by other). 12' stainless steel cable connects to field adjustable collector. An array of cables branch off and attach to trim with adjustable grippers. cable system allows for exact AFF mounting heights. sloped ceiling adapter.

### emergency

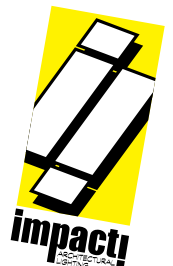
recommend use of inverter (by other).

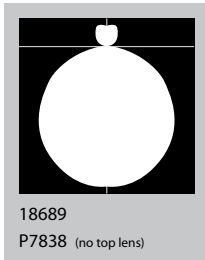
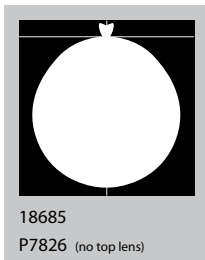
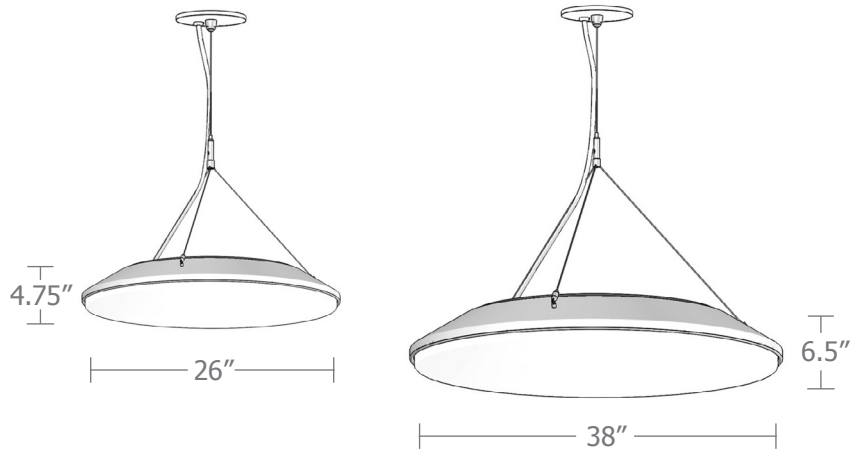


## catalog number

--	--	--	--	--

size	top lens	LED array	finish	options
<b>P7826</b> (2ft) 26"dia X 4.75"ht	<b>A</b> amber	<b>30FX</b> 3000K	<b>AP</b> anodized paint	<b>90CRI</b>
	<b>B</b> blue	<b>30LO</b> 3000K	<b>BN</b> brown	<b>BKPC</b> Black power cord and canopy
	<b>R</b> red	<b>30HI</b> 3000K	<b>BR</b> brick red	<b>SBPC</b> Silver braid power cord and white canopy
	<b>W</b> white	<b>35FX</b> 3500K	<b>BS</b> brass	
<b>P7838</b> (3ft) 38"dia X 6.5"ht	<b>N</b> no top lens (10% up light)	<b>35LO</b> 3500K	<b>BU</b> blue	
		<b>35HI</b> 3500K	<b>BZ</b> bronze	
		<b>40FX</b> 4000K	<b>CP</b> champagne	
		<b>40LO</b> 4000K	<b>FB</b> flat black	
		<b>40HI</b> 4000K	<b>GM</b> gun metal	
		<b>CL</b> xxxx lm custom lumens consult factory	<b>GR</b> green	
			<b>MB</b> military blue	
			<b>MN</b> mint	
			<b>MW</b> matte white	
			<b>OR</b> orange	
			<b>PL</b> purple	
			<b>RD</b> red	
			<b>SB</b> satin black	
			<b>SS</b> satin silver	
			<b>TG</b> textured gray	
			<b>TW</b> textured white	
			<b>YO</b> yellow	
			<b>premium finish</b>	
			<b>BA</b> brushed aluminum	
			<b>RAL</b> specify RAL#	

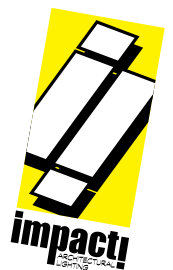




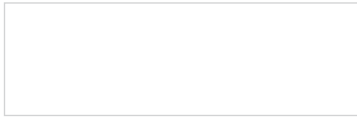
Cat No	Delivered* Lumens	Watts		Amps	
		120V / 277V	120V	277V	277V
<b>P7826 FX</b>	2340	28	0.23	0.10	
<b>P7826 LO</b>	4680	57	.48	.21	
<b>P7826 HI</b>	7020	85	.71	.31	
		ies file # 18685 (no top lens)			
<b>P7838 FX</b>	4180	50	.42	.18	
<b>P7838 LO</b>	8360	101	.84	.36	
		ies file # 18688 (no top lens)			
<b>P7838 HI</b>	13370	162	1.35	.58	
		ies file # 18689 (no top lens)			

\*delivered lumens based on 4000K, 80+ cri (90cri multiplier .83)

\* consult factory for indirect lumens



## Powder Coat Paint Finishes



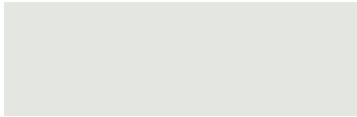
**MW** matte white



**CP** champagne



**YO** yellow 1018



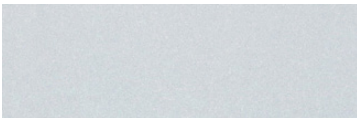
**TW** textured white



**BZ** bronze



**RD** red 3020



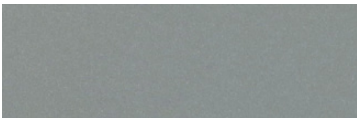
**AP** anodized paint



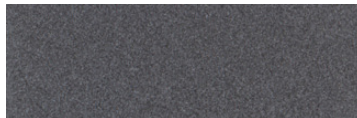
**BS** brass



**BU** blue 5017



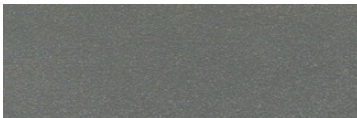
**SS** satin silver



**GM** gun metal



**OR** orange 2011



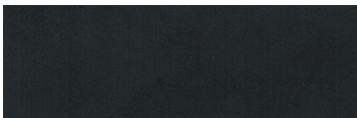
**TG** textured gray



**BR** brick red



**MN** mint 6019



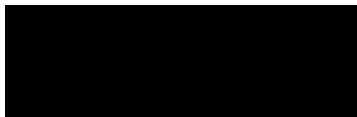
**FB** flat black



**BN** brown 8023



**GR** green 6018



**SB** satin black



**MB** military blue



**PL** purple 4005

For accurate color verification, actual finish samples are available upon request.

## Premium Finishes\*



**BA** brushed aluminum



**RAL#**

\*Available on select series. Consult product submittal for availability.

