

job name:
 type:

wāf.r™ ceiling spec sheet

material

trim ring

precision CNC spun .063" aluminum. rolled bottom edge for added strength.

diffuser

.187" virgin matte white acrylic lens held in place with allen key set screws recessed into trim ring.

optics

reflector

.050" aluminum array platform painted high reflectance (>92%) matte white powder coat.

LED

custom LED board in 3000K, 3500K, or 4000K (80+ cri standard) optional 90cri (see below). under normal operating conditions, the LEDs employed are rated for >50,000hrs L70 (6.8K) per IES TM-21 from LM-80 test data. white power cord is standard with other color options listed below.

driver

integral, programmable, UL class P, class 2, universal input (120-277v), constant current, 0-10v dimming, 1% minimum dimming level, PF >.9, THD <20%, protections include open and short circuit, overload and over temperature.

mounting

designed to mount to 4 inch octagon junction box (by other). consult factory for installation instructions.

emergency

recommend use of inverter (by other).



catalog number

size
C5518
 18"dia X 3"ht

C5526
 (2ft) 26"dia X 5"ht

C5538
 (3ft) 38"dia X 6"ht

C5548
 (4ft) 48"dia X 7"ht

LED array

30FX 3000K

30LO 3000K

30HI 3000K

35FX 3500K

35LO 3500K

35HI 3500K

40FX 4000K

40LO 4000K

40HI 4000K

CL xxxx lm
 custom lumens
 consult factory

finish

AP anodized paint

BN brown

BR brick red

BS brass

BU blue

BZ bronze

CP champagne

FB flat black

GM gun metal

GR green

MB military blue

MN mint

MW matte white

OR orange

PL purple

RD red

SB satin black

SS satin silver

TG textured gray

TW textured white

YO yellow

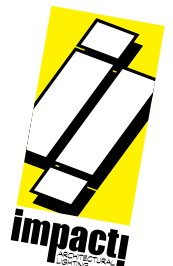
premium finish

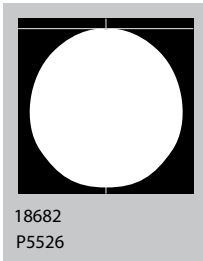
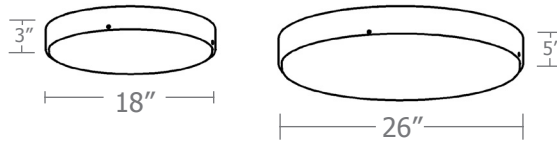
BA brushed aluminum

RAL specify RAL#

options

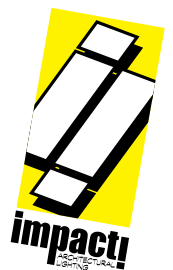
90CRI

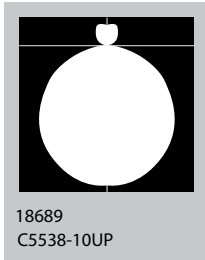
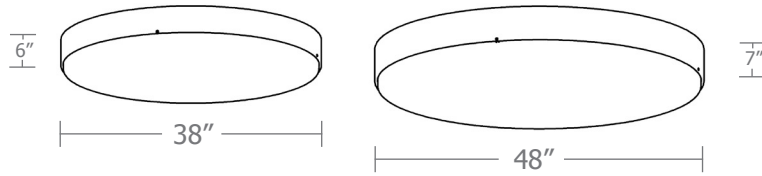




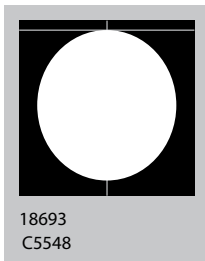
Cat No	Delivered* Lumens	Watts		Amps	
		120V / 277V	120V	277V	
C5518 FX	1170	14	.12	.05	
C5518 LO	2070	25	.21	.09	
C5518 HI	3500	42	.35	.15	
		ies file # 20153			
C5526 FX	2340	28	.23	.10	
C5526 LO	4680	57	.48	.21	
		ies file # 18681			
C5526 HI	7020	85	.71	.31	
		ies file # 18682			

*delivered lumens based on 4000K, 80+ cri
(90cri multiplier .83)





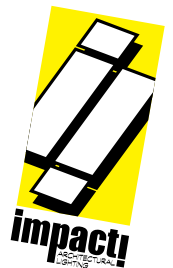
*consult factory for information on indirect lumens



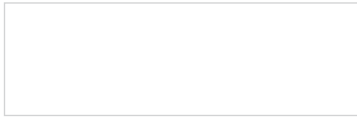
Cat No Delivered* Lumens **Watts** 120V / 277V **Amps** 120V 277V

C5538 FX	4180	50	.42	.18
C5538 LO	8360	101	.84	.36
		ies file # 18686		
C5538 HI	13370	162	1.35	.58
		ies file # 18687		
C5548 FX	5675	69	.58	.25
C5548 LO	11370	137	1.14	.49
		ies file # 18692		
C5548 HI	19120	230	1.92	.83
		ies file # 18693		

*delivered lumens based on 4000K, 80+ cri (90cri multiplier .83)



Powder Coat Paint Finishes



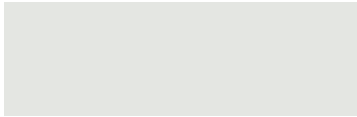
MW matte white



CP champagne



YO yellow 1018



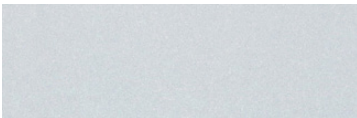
TW textured white



BZ bronze



RD red 3020



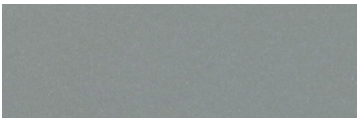
AP anodized paint



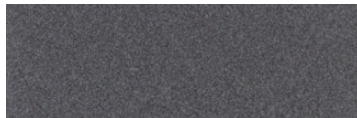
BS brass



BU blue 5017



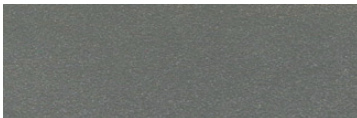
SS satin silver



GM gun metal



OR orange 2011



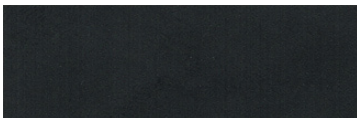
TG textured gray



BR brick red



MN mint 6019



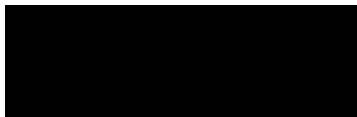
FB flat black



BN brown 8023



GR green 6018



SB satin black



MB military blue



PL purple 4005

For accurate color verification, actual finish samples are available upon request.

Premium Finishes*



BA brushed aluminum



RAL#

*Available on select series. Consult product submittal for availability.

