

job name:
 type:

mere.ly™ spec sheet

driver housing / power head

extruded aluminum with silver anodized or black anodized finish, acts as heat sink as well. also available in painted finishes listed below.

diffuser

6" dia. .100" virgin clear acrylic cylinder. (other lengths available upon request)

decorative film

flexible film rests on clear acrylic ledge bonded to bottom of cylinder. choose from 4 patterns listed below.

LED module

COB array in 2700K, 3000K, 3500K, or 4000K. (call factory for 5000K) (80+ cri standard) optional 90cri (see below). under normal operating conditions, the LEDs employed are rated for >50,000hrs L70 (6.8K) per IES TM-21 from LM-80 test data.

driver

integral, programmable, UL class P, class 2, universal input (120-277v), constant current, 0-10v dimming, 1% minimum dimming level, PF >.9, THD <20%, protections include open and short circuit, overload and over temperature.

mounting

5" dia. spun steel canopy in satin white with single or dual stainless steel cables and field adjustable grippers that allow for exact AFF mounting heights.

premium mountings

colored cloth cord (optional)

extruded aluminum canopy painted to match fixture. ultrathin vertical stainless steel cable and field adjustable gripper that allow for exact AFF mounting heights. cloth-covered power cord color options listed below. cord requires special stripping tool (link).

power over cable (optional)

extruded aluminum canopy painted to match fixture. Class 2 LED powered suspension system that suspends and powers the fixture with thin stainless steel copper-core conductive cables, providing a clean look without the need for a separate power cord. powered suspension requires cable cutter (link) specifically designed to cut stainless steel aircraft cable from 1/32" to 1/8".

emergency

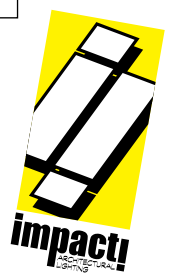
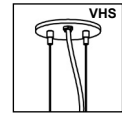
recommend use of inverter (by other). optional WREM: wired for remote EM battery (by other). if using WHPC, SBPC, or BKPC cords, 2nd power cord required.



catalog number

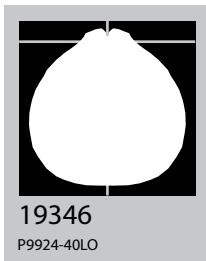
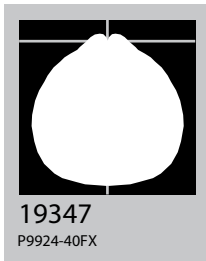
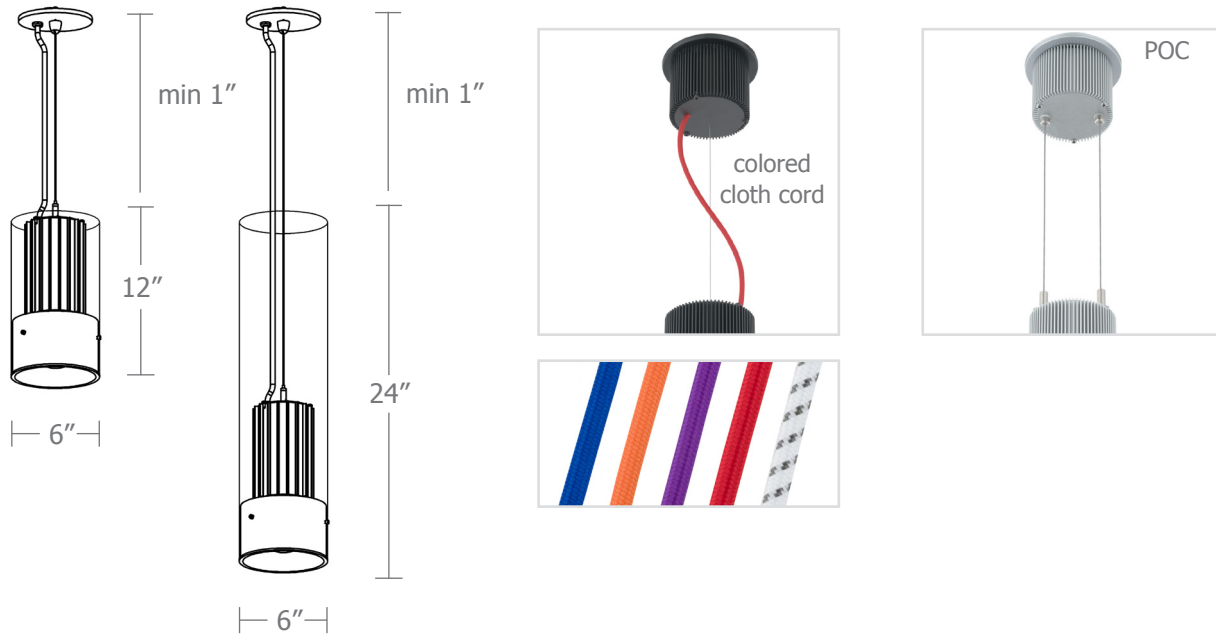
<input type="text"/>	<input type="text"/>	<input type="text"/>	<input type="text"/>	<input type="text"/>	<input type="text"/>	<input type="text"/>
----------------------	----------------------	----------------------	----------------------	----------------------	----------------------	----------------------

size	decorative film	CCT	lumens	powerhead finish	power cord	options
P9912 6"dia X 12"ht	AB Aurora Borealis	27 2700K	FX 1625 lm	AN silver anodized	WHPC white power cord and canopy	3FT 36" cable
	CB Cranberry	30 3000K	LO 2325 lm	ANB anodized black	BKPC black power cord and canopy	6FT 72" cable
P9924 6"dia X 24"ht	CS California Sunset	35 3500K	CL *xxxx lm custom lumens consult factory	painting finish	SBPC silver braid power cord and white canopy	12FT 144" cable*
	NY New York velvet	40 4000K		BN brown	premium (driver canopy required) (not available w/ 12ft option)	90CRI
				BR brick red	BUPC blue cloth cord	BL frosted acrylic bottom lens, solvent welded.
				BS brass	ORPC orange cloth cord	VHS 2-point vertical hanging system
				BU blue	PLPC purple cloth cord	WREM wired for remote EM battery pack (by other) (see note above)
				BZ bronze	RDPC red cloth cord	*not available with premium power cords
				CP champagne	WGPC white & gray dot cloth cord	
				GM gun metal	POC power over cable	
				GR green		
				MB military blue		
				MN mint		
				MW matte white		
				OR orange		
				PL purple		
				RD red		
				SS satin silver		
				TG textured gray		
				TW textured white		
				YO yellow		



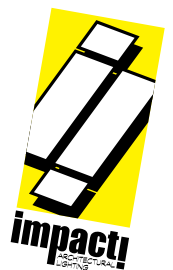
premium finish
 RAL specify RAL#



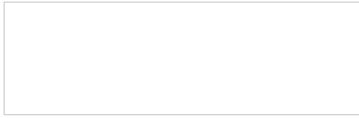


Cat No	Delivered Lumens*	Watts		Amps	
		120V / 277V	120V	277V	
P9912 FX	1625	14	.12	.05	
P9912 LO	2325	20	.17	.07	
P9924 FX	1625	14	.12	.05	
		ies file # 19347			
P9924 LO	2325	20	.17	.07	
		ies file # 19346			

*delivered lumens based on 4000K, 80+ cri (90cri multiplier .83)



Powder Coat Paint Finishes



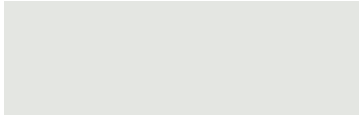
MW matte white



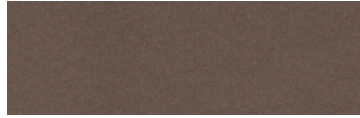
CP champagne



YO yellow 1018



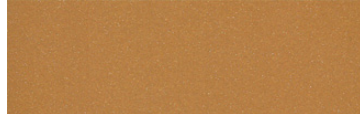
TW textured white



BZ bronze



RD red 3020



BS brass



BU blue 5017



SS satin silver



GM gun metal



OR orange 2011



TG textured gray



BR brick red



MN mint 6019



BN brown 8023



GR green 6018



MB military blue



PL purple 4005

For accurate color verification, actual finish samples are available upon request.

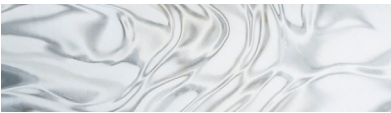
Premium Finishes*



RAL#

*Available on select series. Consult product submittal for availability.

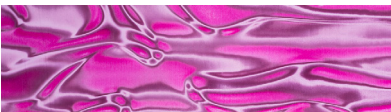
Decorative Films



AB Aurora Borealis



CS California Sunset



CB Cranberry



NY New York Velvet

