

job name:
 type:

12" yo.yo™ spec sheet

material

housing

three-piece precision CNC spun .063" aluminum.

bottom diffuser

.125" gloss white acrylic.

LED module

two COB light engines in 2700K, 3000K, 3500K, or 4000K. (call factory for 5000K) (80+ cri standard) optional 90cri (see below). under normal operating conditions, the LEDs employed are rated for >50,000hrs L70 (6.8K) per IES TM-21 from LM-80 test data.

driver

integral, programmable, UL class P, class 2, universal input (120-277v), constant current, 0-10v dimming, 1% minimum dimming level, PF > .9, THD <20%, protections include open and short circuit, overload and over temperature. (dual circuit dimming optional) (requires second power cord)

mounting

5"dia. spun steel canopy in satin white with 6ft stainless steel cable tripod and field adjustable grippers that allow for exact AFF mounting heights. or select 12ft adjustable suspension. (drawing below)

finish

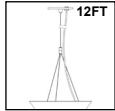
select from standard powder coat paint finishes or specify RAL# for custom colors.

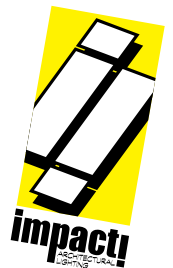
emergency

recommend use of inverter (by other). optional WREM: wired for remote EM battery (by other). if using WHPC, SBPC, or BKPC cords, 2nd power cord required.



catalog number

<input type="text"/>	<input type="text"/>	<input type="text"/>	<input type="text"/>	<input type="text"/>	<input type="text"/>	<input type="text"/>
size	indirect LED	direct LED	indirect LED	direct LED	power cord	options
P5012 12"dia X 8"ht see page 2 for info on P5016	CCT lumens 27 2700K FX 700 lm 30 3000K LO 1200 lm 35 3500K HI 2000 lm 40 4000K	CCT lumens 27 2700K FX 400 lm 30 3000K LO 700 lm 35 3500K HI 900 lm 40 4000K	AP anodized paint BN brown BR brick red BS brass BU blue BZ bronze CP champagne FB flat black GM gun metal GR green MB military blue MN mint MW matte white OR orange PL purple RD red SB satin black SS satin silver TG textured gray TW textured white YO yellow	WHPC white power cord and canopy BKPC black power cord and canopy SBPC silver braid power cord and white canopy	6FT 72" cable 12FT 12ft adjustable suspension 90CRI DCDM dual circuit wiring on dimming direct/indirect (requires 2nd power cord) WREM wired for remote EM battery pack (by other) (see note above)	
			premium finish RAL specify RAL#			



job name:
 type:

16" yo.yo™ spec sheet

material

housing

three-piece precision CNC spun .063" aluminum.

bottom diffuser

.125" gloss white acrylic.

LED module

two COB light engines in 2700K, 3000K, 3500K, or 4000K. (call factory for 5000K) (80+ cri standard) optional 90cri (see below). under normal operating conditions, the LEDs employed are rated for >50,000hrs L70 (6.8K) per IES TM-21 from LM-80 test data.

driver

integral, programmable, UL class P, class 2, universal input (120-277v), constant current, 0-10v dimming, 1% minimum dimming level, PF >.9, THD <20%, protections include open and short circuit, overload and over temperature.

mounting

5"dia. spun steel canopy in satin white with 6ft stainless steel cable tripod and field adjustable grippers that allow for exact AFF mounting heights. or select 12ft adjustable suspension. (drawing below)

finish

select from standard powder coat paint finishes or specify RAL# for custom colors.

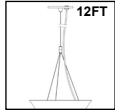
emergency

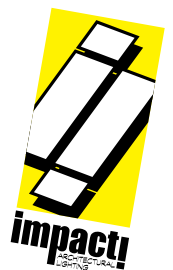
recommend use of inverter (by other).

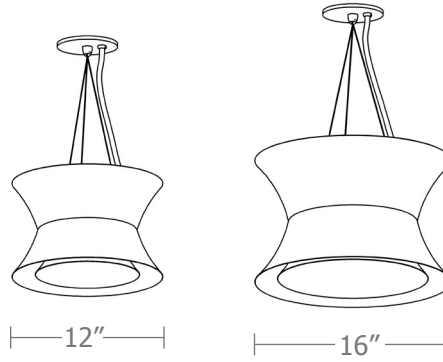
optional WREM: wired for remote EM battery (by other). if using WHPC, SBPC, or BKPC cords, 2nd power cord required.



catalog number

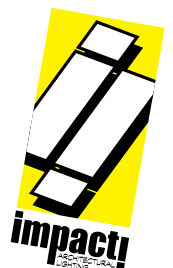
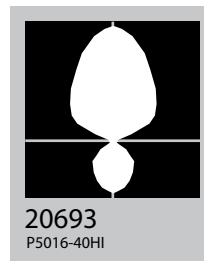
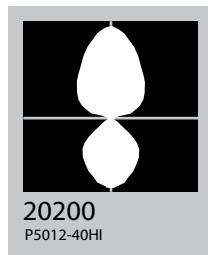
<input type="text"/>	<input type="text"/>	<input type="text"/>	<input type="text"/>	<input type="text"/>	<input type="text"/>	<input type="text"/>
size	indirect LED	direct LED	painted finishes	power cord	options	
P5016 16.25"dia X 10.25"ht	CCT lumens	CCT lumens	AP anodized paint	WHPC white power cord and canopy	6FT 72" cable	
	27 2700K FX 700 lm	27 2700K FX 400 lm	BN brown	BKPC black power cord and canopy	12FT 12ft adjustable suspension	
	30 3000K LO 1800 lm	30 3000K LO 800 lm	BR brick red	SBPC silver braid power cord and white canopy	90CRI	
	35 3500K HI 3000 lm	35 3500K HI 1150 lm	BS brass		DCDM dual circuit wiring on dimming direct/indirect (requires 2nd power cord)	
	40 4000K	40 4000K	BU blue		WREM wired for remote EM battery pack (by other) (see note above)	
			BZ bronze			
			CP champagne			
			FB flat black			
			GM gun metal			
			GR green			
			MB military blue			
			MN mint			
			MW matte white			
			OR orange			
			PL purple			
			RD red			
			SB satin black			
			SS satin silver			
			TG textured gray			
			TW textured white			
			YO yellow			
			premium finish			
			RAL specify RAL#			



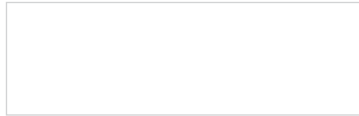


Cat No	Indirect Delivered* Lumens	Watts		Amps		Direct Delivered Lumens	Watts		Amps	
		120V/277V	120V	277V	120V/277V		120V	277V		
P5012 FX	700	7				400	7			
P5012 LO	1200	12				700	12			
P5012 HI	2000	21				900	16			
		ies file # 20200								
P5016 FX	700	7				400	7			
P5016 LO	1800	19				800	14			
P5016 HI	3000	30				1150	21			
		ies file # 20693								

*delivered lumens based on 4000K, 80+ cri (90cri multiplier .83)



Powder Coat Paint Finishes



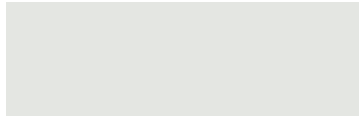
MW matte white



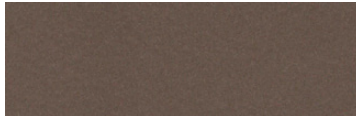
CP champagne



YO yellow 1018



TW textured white



BZ bronze



RD red 3020



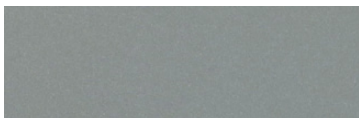
AP anodized paint



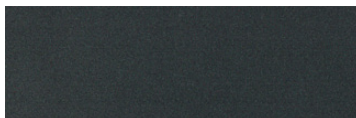
BS brass



BU blue 5017



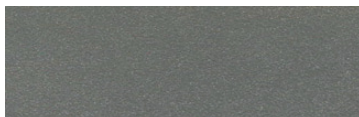
SS satin silver



GM gun metal



OR orange 2011



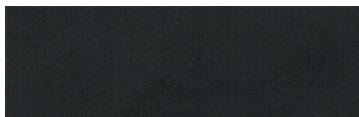
TG textured gray



BR brick red



MN mint 6019



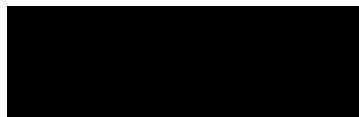
FB flat black



BN brown 8023



GR green 6018



SB satin black



MB military blue



PL purple 4005

For accurate color verification, actual finish samples are available upon request.

Premium Finishes*



RAL#

*Available on select series. Consult product submittal for availability.

