

job name:   
 type:

## slikk™ LED spec sheet

### material

#### trim ring

precision CNC spun .063" aluminum. rolled top edge for added strength.

#### diffuser

.125" virgin white acrylic inner lens.

### optics

#### reflector

22 gauge aluminum powder coat painted high reflectance white.

### efficiency

constant current driver operates LED consistently, regulating the current flow through it to produce the most consistent light output and efficiency. constant current driver protects LEDs from voltage fluctuations in the building power system, eliminating stress from over voltage, inrush surges, and flicker from voltage fluctuations, assuring long service life.

### LED

custom LED board in 3000K, 3500K, or 4000K (80 cri). under normal operating conditions, the LEDs employed are rated for >36,000hrs L70 (6.8K) per IES TM-21 from LM-80 test data, and 71,000hrs L70 projected life. white power cord is standard with other color options listed below.

### driver

Roal Strato series, class 2 power unit, built-in active PFC function, universal input (120-277 vac), 10% minimum dimming level, PF >80, protections include short circuit, over current, over voltage and over temperature. wired for 0-10v dimming from factory.

### mounting

5"dia. spun steel canopy in satin white. four point vertical suspension of 12 ft long stainless steel cables attach to trim with field adjustable grippers that allow for exact AFF mounting heights. optional quadpod to single point cable suspension.

### emergency

emergency not available. if required, recommend use of inverter (by other).



## catalog number





### size

**P6224** 24"dia X 8"ht

**P6230** 30"dia X 8"ht

### LED array

**30LO** 3000K

**30HI** 3000K

**35LO** 3500K

**35HI** 3500K

**40LO** 4000K

**40HI** 4000K

### finish

**AP** anodized paint

**BR** brick red

**BU** blue

**BZ** bronze

**CP** champagne

**MB** military blue

**MN** mint

**MW** matte white

**OR** orange

**RD** red

**SB** satin black

**SS** satin silver

**TG** textured gray

**TW** textured white

**YO** yellow

### options

**QPD** Quadpod hanging system

**BKPC** Black power cord and canopy

**SBPC** Silver braid power cord and white canopy

### Premium Finish

**RAL** specify RAL#

**KNP** knotty pine

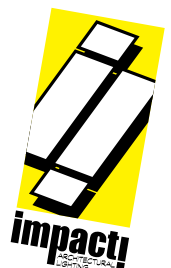
**MED** mediterranean

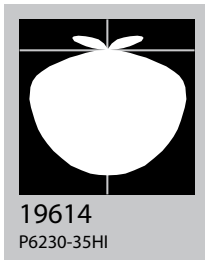
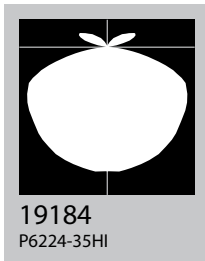
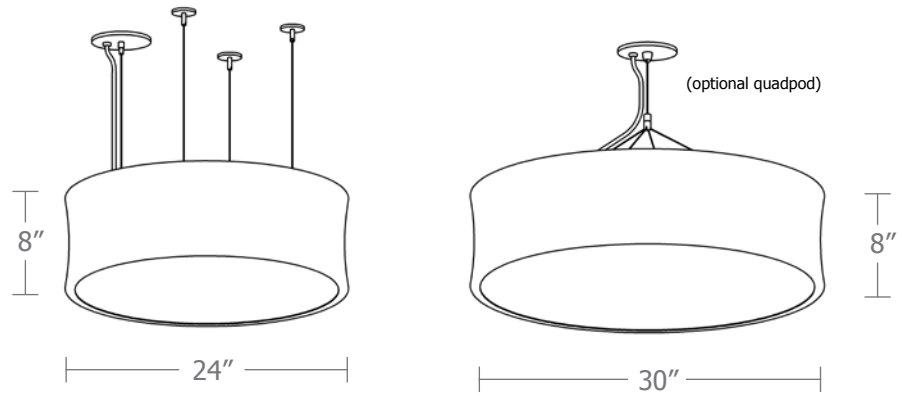
**MHG** mahogany

**MPL** maple

**WAL** walnut

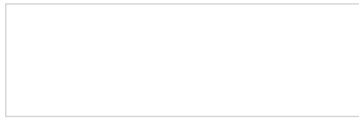
(extended lead time typical for wood finishes)





| Cat No          | Delivered Lumens | Watts            |      | Amps |      |
|-----------------|------------------|------------------|------|------|------|
|                 |                  | 120V             | 277V | 120V | 277V |
| <b>P6224 LO</b> |                  | 29               | 29   | 0.24 | 0.10 |
| 4000K           | 1380             |                  |      |      |      |
| 3500K           | 1311             |                  |      |      |      |
| 3000K           | 983              |                  |      |      |      |
| <b>P6224 HI</b> |                  | 54               | 54   | 0.48 | 0.19 |
| 4000K           | 2569             |                  |      |      |      |
| 3500K           | 2447             | ies file # 19184 |      |      |      |
| 3000K           | 1927             |                  |      |      |      |
| <b>P6230 LO</b> |                  | 44               | 44   | 0.37 | 0.16 |
| 4000K           | 2094             |                  |      |      |      |
| 3500K           | 1989             |                  |      |      |      |
| 3000K           | 1570             |                  |      |      |      |
| <b>P6230 HI</b> |                  | 74               | 74   | 0.64 | 0.27 |
| 4000K           | 5444             |                  |      |      |      |
| 3500K           | 5185             | ies file # 19614 |      |      |      |
| 3000K           | 4083             |                  |      |      |      |

## Powder Coat Paint Finishes



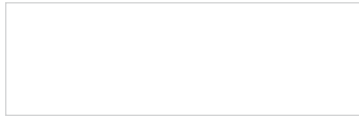
**MW** matte white



**SB** satin black



**YO** yellow 1018



**TW** textured white



**CP** champagne



**RD** red 3020



**AP** anodized paint



**BZ** bronze



**BU** blue 5017



**SS** satin silver



**BR** brick red



**OR** orange 2011



**TG** textured gray



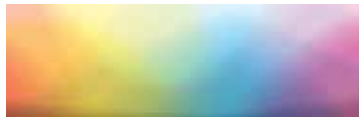
**MB** military blue



**MN** mint 6019

For accurate color verification, actual finish samples are available upon request.

## Premium Finishes\*



**RAL#**



**MED** mediterranean



**KNP** knotty pine



**MPL** maple



**WAL** walnut



**MHG** mahogany

For accurate color verification, actual finish samples are available upon request.

\*Available on select series. Consult product spec sheet for availability.

(extended lead time typical for wood finishes)

