

job name:
 type:

slikk™ spec sheet

material

trim ring
 precision CNC spun .063" aluminum. rolled top edge for added strength.

diffuser
 .125" virgin white acrylic bell-shaped inner lens, provides very diffuse illumination.

optics

reflector
 22 gauge aluminum powder coat painted high reflectance matte white.

liner
 .008" white, 98% high diffuse reflector film increases light output while diffusing LED images.

LED

custom LED board in 3000K, 3500K, or 4000K (80+ cri standard) optional 90cri (see below).
 under normal operating conditions, the LEDs employed are rated for >50,000hrs L70 (6.8K) per IES TM-21 from LM-80 test data. white power cord is standard with other color options listed below.

driver

integral, programmable, UL class P, class 2, universal input (120-277v), constant current, 0-10v dimming, 1% minimum dimming level, PF >.9, THD <20%, protections include open and short circuit, overload and over temperature.

mounting

5"dia. spun steel canopy in satin white. four point vertical suspension of 12 ft long stainless steel cables attach to trim with field adjustable grippers that allow for exact AFF mounting heights. optional quadpod to single point cable suspension, with sloped ceiling adapter.

emergency

recommend use of inverter (by other).



catalog number

size

P6224 24"dia X 8"ht

P6230 30"dia X 8"ht

LED array

30LO 3000K

30HI 3000K

35LO 3500K

35HI 3500K

40LO 4000K

40HI 4000K

CL xxxx lm
custom lumens
 consult factory

finish

- AP** anodized paint
- BN** brown
- BR** brick red
- BS** brass
- BU** blue
- BZ** bronze
- CP** champagne
- FB** flat black
- GM** gun metal
- GR** green
- MB** military blue
- MN** mint
- MW** matte white
- OR** orange
- PL** purple
- RD** red
- SB** satin black
- SS** satin silver
- TG** textured gray
- TW** textured white
- YO** yellow

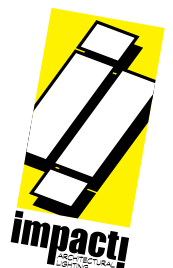
premium finish

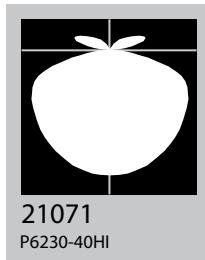
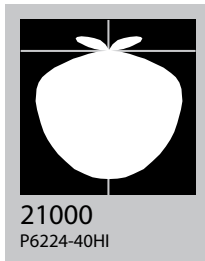
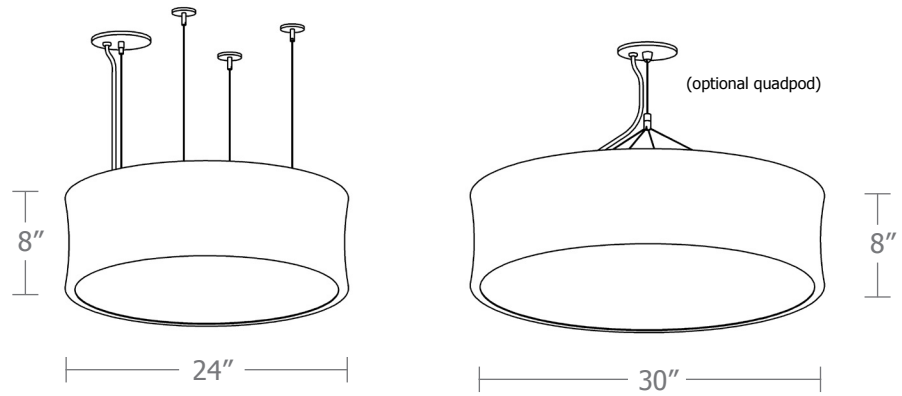
RAL specify RAL#

options

90CRI

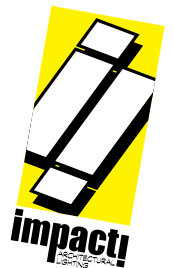
- QPD** Quadpod hanging system
- BKPC** Black power cord and canopy
- SBPC** Silver braid power cord and white canopy



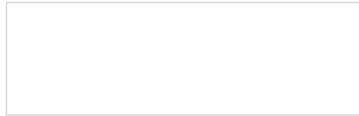


Cat No	Delivered Lumens	Watts		Amps	
		120V / 277V	120V	277V	
P6224 LO	2633	29	0.24	0.10	
P6224 HI	5190	57	0.48	0.19	
		ies file # 21000			
P6230 LO	3950	44	0.37	0.16	
P6230 HI	6759	77	0.64	0.27	
		ies file # 21071			

*delivered lumens based on 4000K, 80+ cri
(90cri multiplier .83)



Powder Coat Paint Finishes



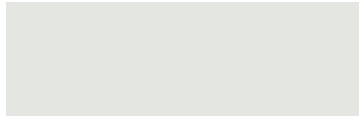
MW matte white



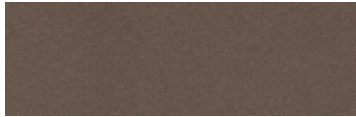
CP champagne



YO yellow 1018



TW textured white



BZ bronze



RD red 3020



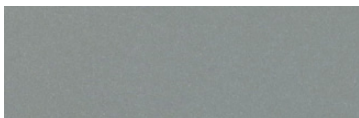
AP anodized paint



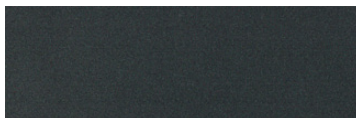
BS brass



BU blue 5017



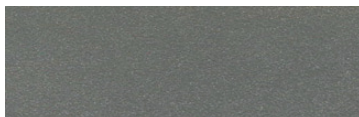
SS satin silver



GM gun metal



OR orange 2011



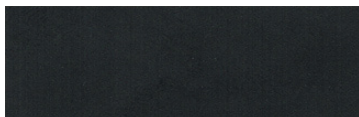
TG textured gray



BR brick red



MN mint 6019



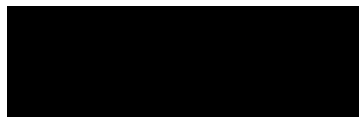
FB flat black



BN brown 8023



GR green 6018



SB satin black



MB military blue



PL purple 4005

For accurate color verification, actual finish samples are available upon request.

Premium Finishes*



RAL#

*Available on select series. Consult product submittal for availability.

