

job name:
 type:

wāf.r™ spec sheet

material

trim ring

precision CNC spun .063" aluminum. rolled bottom edge for added strength.

diffuser

.187" virgin matte white acrylic drop lens held in place with allen key set screws recessed into trim ring.

optics

reflector

.050" aluminum array platform painted high reflectance (>92%) matte white powder coat provides 100% downlight. for uplight, specify under options.

LED

custom LED board in 3000K, 3500K, or 4000K (80+ cri standard) optional 90cri (see below). under normal operating conditions, the LEDs employed are rated for >50,000hrs L70 (6.8K) per IES TM-21 from LM-80 test data. white power cord is standard with other color options listed below.

driver

integral, programmable, UL class P, class 2, universal input (120-277v), constant current, 0-10v dimming, 1% minimum dimming level, PF >.9, THD <20%, protections include open and short circuit, overload and over temperature.

mounting

5" dia. spun steel canopy in satin white is designed to mount to a 4" octagon junction box (by other). four point vertical suspension of 12 ft long stainless steel cables attach to trim with field adjustable grippers that allow for exact AFF mounting heights. slip ring coupler allows for easy wire connections. optional quadpod to single point cable suspension.

emergency

recommend use of inverter (by other).



catalog number

--	--	--	--

size

P5518
18" dia X 3" ht

P5526
(2ft) 26" dia X 5" ht

P5538
(3ft) 38" dia X 6" ht

P5548
(4ft) 48" dia X 7" ht

LED array

30FX 3000K

30LO 3000K

30HI 3000K

35FX 3500K

35LO 3500K

35HI 3500K

40FX 4000K

40LO 4000K

40HI 4000K

CL xxxx lm
custom lumens
consult factory

finish

AP anodized paint

BN brown

BR brick red

BS brass

BU blue

BZ bronze

CP champagne

FB flat black

GM gun metal

GR green

MB military blue

MN mint

MW matte white

OR orange

PL purple

RD red

SB satin black

SS satin silver

TG textured gray

TW textured white

YO yellow

options

10UP 10% uplight

90CRI

BKPC Black power cord and canopy

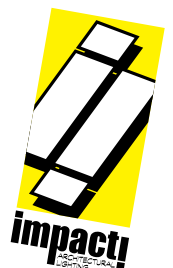
SBPC Silver braid power cord and white canopy

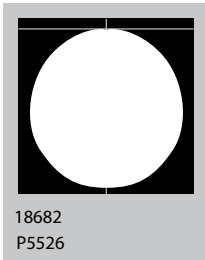
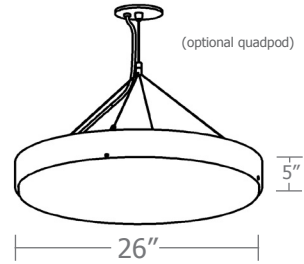
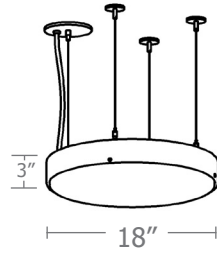
QPD Quadpod hanging system

premium finish

BA brushed aluminum

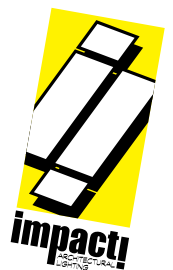
RAL specify RAL#

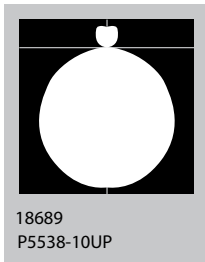
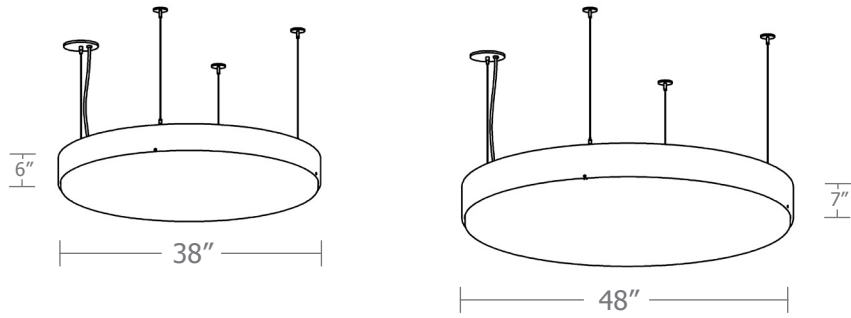




Cat No	Delivered* Lumens	Watts		Amps	
		120V / 277V	120V	277V	
P5518 FX	1170	14	.12	.05	
P5518 LO	2070	25	.21	.09	
P5518 HI	3500	42	.35	.15	
		ies file # 20153			
P5526 FX	2340	28	.23	.10	
P5526 LO	4680	57	.48	.21	
		ies file # 18681			
P5526 HI	7020	85	.71	.31	
		ies file # 18682			

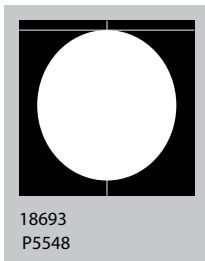
*delivered lumens based on 4000K, 80+ cri (90cri multiplier .83)





18689
P5538-10UP

*consult factory for information on indirect lumens

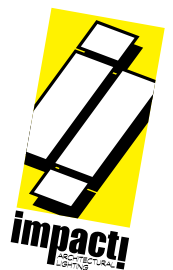


18693
P5548

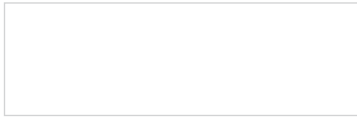
Cat No	Delivered* Lumens	Watts		Amps	
		120V / 277V	120V	277V	277V

P5538 FX	4180	50	.42	.18
P5538 LO	8360	101	.84	.36
		ies file # 18686		
P5538 HI	13370	162	1.35	.58
		ies file # 18687		
P5548 FX	5675	69	.58	.25
P5548 LO	11370	137	1.14	.49
		ies file # 18692		
P5548 HI	19120	230	1.92	.83
		ies file # 18693		

*delivered lumens based on 4000K, 80+ cri
(90cri multiplier .83)



Powder Coat Paint Finishes



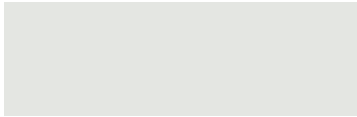
MW matte white



CP champagne



YO yellow 1018



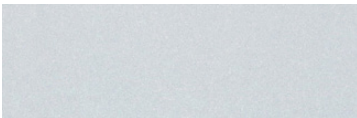
TW textured white



BZ bronze



RD red 3020



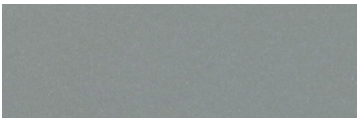
AP anodized paint



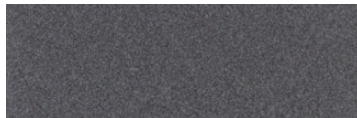
BS brass



BU blue 5017



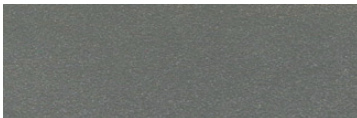
SS satin silver



GM gun metal



OR orange 2011



TG textured gray



BR brick red



MN mint 6019



FB flat black



BN brown 8023



GR green 6018



SB satin black



MB military blue



PL purple 4005

For accurate color verification, actual finish samples are available upon request.

Premium Finishes*



BA brushed aluminum



RAL#

*Available on select series. Consult product submittal for availability.

