

job name:
 type:

imago™ LED spec sheet

driver housing

extruded aluminum with silver anodized or black anodized finish, acts as heat sink as well. also available in painted finishes listed below.

diffuser

.25" parabolic matte white acrylic.

bottom lens (optional)

P95 frosted acrylic bottom lens solvent welded to bottom of parabolic diffuser.

efficiency

center beam power greater than compact fluorescent with up to 60% less energy consumption. constant current driver operates LED consistently, regulating the current flow through it to produce the most consistent light output and efficiency. constant current driver protects LEDs from voltage fluctuations in the building power system, eliminating stress from over voltage, inrush surges, and flicker from voltage fluctuations, assuring long service life.

modular construction

solder-less holder allows for LED module replacement in the field. modular fixture design allows driver to be replaced in the field.

LED module

COB array in 3000K, 3500K, or 4000K (80 cri). under normal operating conditions, the LEDs employed are rated for >36,000hrs L70 (6.8K) per IES TM-21 from LM-80 test data, and 71,000hrs L70 projected life. contact factory for 90CRI options. white power cord is standard with other color options listed below.

driver

integral, class 2 power unit, built-in active PFC function, universal input (up to 305 vac), 10% minimum dimming level, PF >92, THD <20% at full load, >418khrs MTBF, protections include short circuit, over current, over voltage and over temperature. wired for 1-10v dimming from factory.

mounting

5"dia. spun steel canopy in satin white with single or optional dual 12ft stainless steel cables and field adjustable grippers that allow for exact AFF mounting heights.

emergency

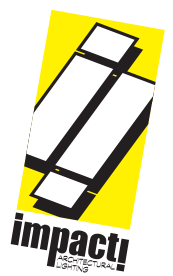
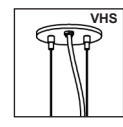
emergency not available. if required, recommend use of inverter (by other).

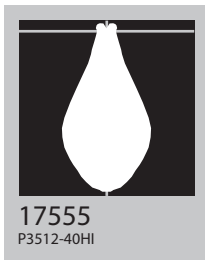
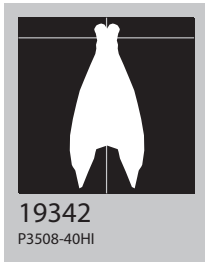
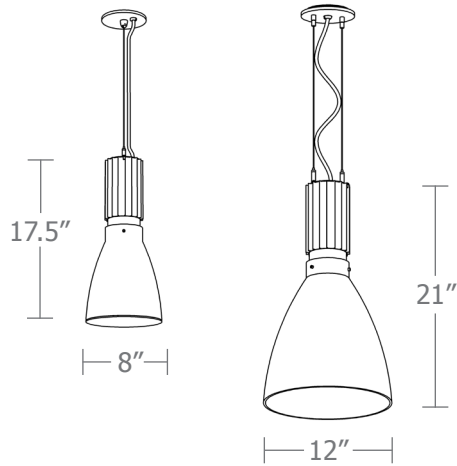


catalog number

--	--	--	--

size	LED array	powerhead finish	options
P3508 8"dia X 17.5"ht	30FX 3000K	AN silver anodized	BKPC Black power cord and canopy
	30LO 3000K	ANB anodized black	SBPC Silver braid power cord and white canopy
P3512 12"dia X 21"ht	30HI 3000K	painting finish	VHS 2-point vertical hanging system
	35FX 3500K	BR brick red	BL Frosted acrylic bottom lens, solvent welded.
	35LO 3500K	BU blue	
	35HI 3500K	BZ bronze	
	40FX 4000K	CP champagne	
	40LO 4000K	MB military blue	
	40HI 4000K	MN mint	
		MW matte white	
		OR orange	
		RD red	
		SS satin silver	
		TG textured gray	
		TW textured white	
		YO yellow	
		premium finish	
		RAL specify RAL#	

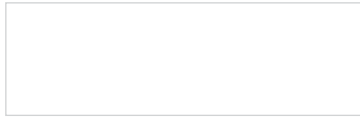




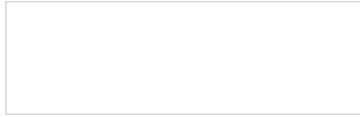
Cat No	Delivered Lumens	Watts		Amps	
		120V	277V	120V	277V
P3508 FX		17	17	.17	.07
4000K	1475				
3500K	1386				
3000K	1268				
P3508 LO		27	27	.23	.10
4000K	2158	ies file # 17549 & # 17550*			
3500K	2029	ies file # 17554			
3000K	1856				
P3508 HI		35	35	.29	.13
4000K	3348	ies file # 19342 & # 19343*			
3500K	3147				
3000K	2879				
P3512 FX		17	17	.17	.07
4000K	1407				
3500K	1322				
3000K	1210				
P3512 LO		27	27	.23	.10
4000K	1957	ies file # 19352			
3500K	1840				
3000K	1680				
P3512 HI		35	35	.29	.13
4000K	3277	ies file # 17555			
3500K	3080				
3000K	2818				

*includes bottom lens option

Powder Coat Paint Finishes



MW matte white



TW textured white



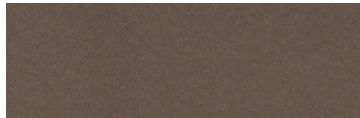
CP champagne



YO yellow 1018



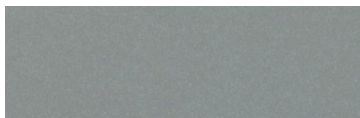
RD red 3020



BZ bronze



BU blue 5017



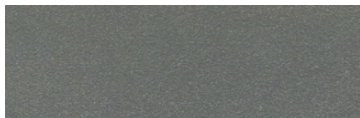
SS satin silver



BR brick red



OR orange 2011



TG textured gray



MB military blue



MN mint 6019

For accurate color verification, actual finish samples are available upon request.

Premium Finishes*



RAL#

For accurate color verification, actual finish samples are available upon request.

*Available on select series. Consult product spec sheet for availability.

