

job name:
 type:

imago.ii™ LED spec sheet

driver housing

extruded aluminum with silver anodized or black anodized finish, acts as heat sink as well. also available in painted finishes listed below.

reflector

.064 spun aluminum parabolic reflector with rolled bottom edge for added strength and silver anodized finish, held in place with socket cap screws. includes highly reflective matte white segmented internal insert for optimal fixture efficiency.

efficiency

center beam power greater than compact fluorescent with up to 60% less energy consumption. constant current driver operates LED consistently, regulating the current flow through it to produce the most consistent light output and efficiency. constant current driver protects LEDs from voltage fluctuations in the building power system, eliminating stress from over voltage, inrush surges, and flicker from voltage fluctuations, assuring long service life.

modular construction

Molex solder-less holder allows for LED module replacement in the field. modular fixture design allows driver to be replaced in the field.

LED module

COB array in 3000K, 3500K, or 4000K (80 cri). under normal operating conditions, the LEDs employed are rated for >36,000hrs L70 (6.8K) per IES TM-21 from LM-80 test data, and 71,000hrs L70 projected life. contact factory for 90CRI options. white power cord is standard with other color options listed below.

driver

integral, class 2 power unit, built-in active PFC function, universal input (up to 305 vac), 10% minimum dimming level, PF >92, THD <20% at full load, >418khrs MTBF, protections include short circuit, over current, over voltage and over temperature. wired for 1-10v dimming from factory.

mounting

5"dia. spun steel canopy in satin white with single or optional dual 12ft stainless steel cables and field adjustable grippers that allow for exact AFF mounting heights.

emergency

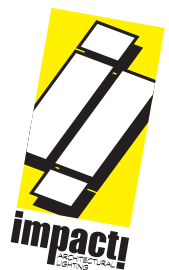
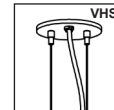
emergency not available. if required, recommend use of inverter (by other).

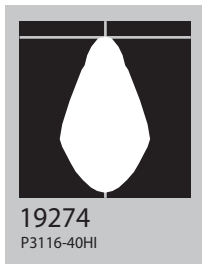
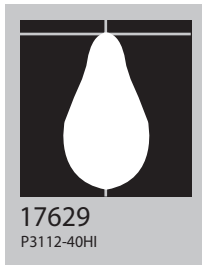
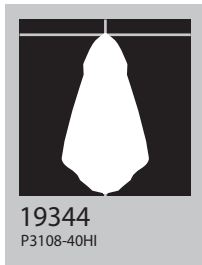
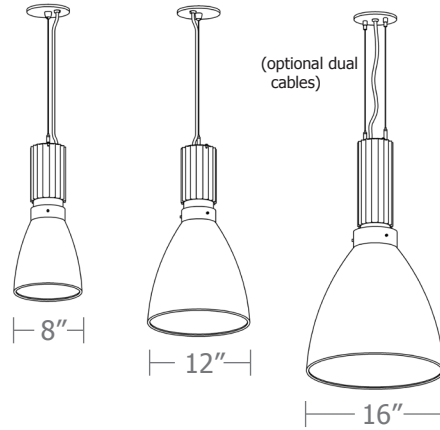


catalog number

| | | | |
|--|--|--|--|
| | | | |
|--|--|--|--|

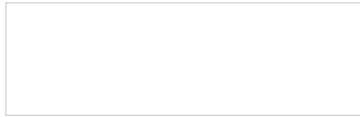
| size | LED array | powerhead finish | options |
|------------------------------|-------------------|---------------------------|-----------------------------------------------------------|
| P3108 8"dia X 17.5"ht | 30FX 3000K | AN silver anodized | PTRSB Painted reflector satin black finish |
| | 30LO 3000K | ANB anodized black | BKPC Black power cord and canopy |
| P3112 12"dia X 21"ht | 30HI 3000K | painting finish | SBPC Silver braid power cord and white canopy |
| | 35FX 3500K | BR brick red | VHS 2-point vertical hanging system |
| P3116 16"dia X 28"ht | 35LO 3500K | BU blue | BL Frosted acrylic bottom lens with 3 finger holes |
| | 35HI 3500K | BZ bronze | |
| | 40FX 4000K | CP champagne | |
| | 40LO 4000K | MB military blue | |
| | 40HI 4000K | MN mint | |
| | | MW matte white | |
| | | OR orange | |
| | | RD red | |
| | | SS satin silver | |
| | | TG textured gray | |
| | | TW textured white | |
| | | YO yellow | |
| | | premium finish | |
| | | RAL specify RAL# | |



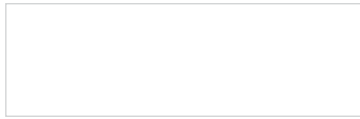


| Cat No | Delivered Lumens | Watts | | Amps | |
|-----------------|------------------|------------------|------|------|------|
| | | 120V | 277V | 120V | 277V |
| P3108 FX | | 17 | 17 | .17 | .07 |
| 4000K | 1087 | | | | |
| 3500K | 1022 | | | | |
| 3000K | 935 | | | | |
| P3108 LO | | 27 | 27 | .23 | .10 |
| 4000K | 1334 | ies file # 17551 | | | |
| 3500K | 1254 | | | | |
| 3000K | 1145 | | | | |
| P3108 HI | | 35 | 35 | .29 | .13 |
| 4000K | 2468 | ies file # 19344 | | | |
| 3500K | 2320 | | | | |
| 3000K | 2122 | | | | |
| P3112 FX | | 17 | 17 | .17 | .07 |
| 4000K | 1221 | | | | |
| 3500K | 1148 | | | | |
| 3000K | 1050 | | | | |
| P3112 LO | | 27 | 27 | .23 | .10 |
| 4000K | 1690 | ies file # 19353 | | | |
| 3500K | 1590 | | | | |
| 3000K | 1450 | | | | |
| P3112 HI | | 35 | 35 | .29 | .13 |
| 4000K | 2772 | ies file # 17629 | | | |
| 3500K | 2606 | | | | |
| 3000K | 2384 | | | | |
| P3116 FX | | 17 | 17 | .17 | .07 |
| 4000K | 1231 | | | | |
| 3500K | 1158 | | | | |
| 3000K | 1059 | | | | |
| P3116 LO | | 27 | 27 | .23 | .10 |
| 4000K | 1802 | | | | |
| 3500K | 1694 | | | | |
| 3000K | 1550 | | | | |
| P3116 HI | | 35 | 35 | .29 | .13 |
| 4000K | 2796 | ies file # 19274 | | | |
| 3500K | 2628 | | | | |
| 3000K | 2405 | | | | |

Powder Coat Paint Finishes



MW matte white



TW textured white



CP champagne



YO yellow 1018



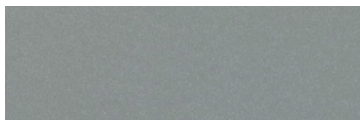
RD red 3020



BZ bronze



BU blue 5017



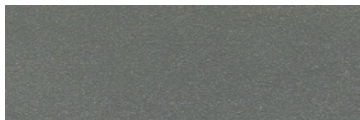
SS satin silver



BR brick red



OR orange 2011



TG textured gray



MB military blue



MN mint 6019

For accurate color verification, actual finish samples are available upon request.

Premium Finishes*



RAL#

For accurate color verification, actual finish samples are available upon request.

*Available on select series. Consult product spec sheet for availability.

