

job name:   
 type:

# imago.ii™ LED spec sheet

## driver housing

extruded aluminum with silver anodized or black anodized finish, acts as heat sink as well. also available in painted finishes listed below.

## reflector

.064 spun aluminum parabolic reflector with rolled bottom edge for added strength and silver anodized finish, held in place with socket cap screws. includes highly reflective matte white segmented internal insert for optimal fixture efficiency.

## efficiency

center beam power greater than compact fluorescent with up to 60% less energy consumption. constant current driver operates LED consistently, regulating the current flow through it to produce the most consistent light output and efficiency. constant current driver protects LEDs from voltage fluctuations in the building power system, eliminating stress from over voltage, inrush surges, and flicker from voltage fluctuations, assuring long service life.

## modular construction

Molex solder-less holder allows for LED module replacement in the field. modular fixture design allows driver to be replaced in the field.

## LED module

COB array in 3000K, 3500K, or 4000K (80 cri). under normal operating conditions, the LEDs employed are rated for >36,000hrs L70 (6.8K) per IES TM-21 from LM-80 test data, and 71,000hrs L70 projected life. contact factory for 90CRI options. white power cord is standard with other color options listed below.

## driver

integral, class 2 power unit, built-in active PFC function, universal input (up to 305 vac), 10% minimum dimming level, PF >92, THD <20% at full load, >418khrs MTBF, protections include short circuit, over current, over voltage and over temperature. wired for 1-10v dimming from factory.

## mounting

5"dia. spun steel canopy in satin white with single or optional dual 12ft stainless steel cables and field adjustable grippers that allow for exact AFF mounting heights.

## emergency

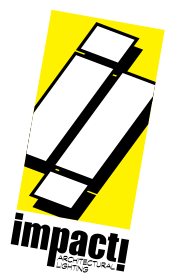
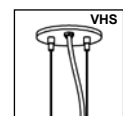
emergency not available. if required, recommend use of inverter (by other).

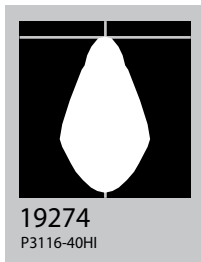
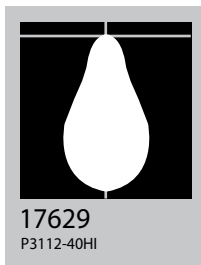
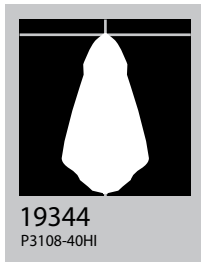
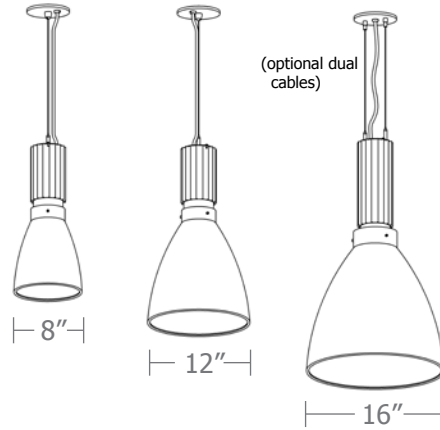


## catalog number

--	--	--	--

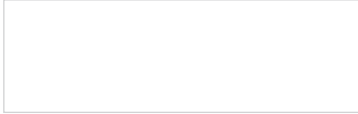
size	LED array	powerhead finish	options
<b>P3108</b> 8"dia X 17.5"ht	<b>30FX</b> 3000K	<b>AN</b> silver anodized	<b>PTRSB</b> Painted reflector satin black finish
	<b>30LO</b> 3000K	<b>ANB</b> anodized black	<b>BKPC</b> Black power cord and canopy
<b>P3112</b> 12"dia X 21"ht	<b>30HI</b> 3000K	<b>painting finish</b>	<b>SBPC</b> Silver braid power cord and white canopy
	<b>35FX</b> 3500K	<b>BR</b> brick red	<b>VHS</b> 2-point vertical hanging system
<b>P3116</b> 16"dia X 28"ht	<b>35LO</b> 3500K	<b>BU</b> blue	<b>BL</b> Frosted acrylic bottom lens with 3 finger holes
	<b>35HI</b> 3500K	<b>BZ</b> bronze	
	<b>40FX</b> 4000K	<b>CP</b> champagne	
	<b>40LO</b> 4000K	<b>MB</b> military blue	
	<b>40HI</b> 4000K	<b>MN</b> mint	
		<b>MW</b> matte white	
		<b>OR</b> orange	
		<b>RD</b> red	
		<b>SS</b> satin silver	
		<b>TG</b> textured gray	
		<b>TW</b> textured white	
		<b>YO</b> yellow	
		<b>premium finish</b>	
		<b>RAL</b> specify RAL#	



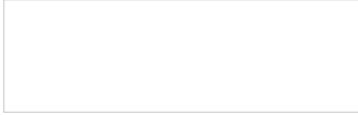


Cat No	Delivered Lumens	Watts		Amps	
		120V	277V	120V	277V
<b>P3108 FX</b>		17	17	.17	.07
4000K	1087				
3500K	1022				
3000K	935				
<b>P3108 LO</b>		27	27	.23	.10
4000K	1591				
3500K	1496				
3000K	1368				
<b>P3108 HI</b>		35	35	.29	.13
4000K	2468	ies file # 19344			
3500K	2320				
3000K	2122				
<b>P3112 FX</b>		17	17	.17	.07
4000K	1221				
3500K	1148				
3000K	1050				
<b>P3112 LO</b>		27	27	.23	.10
4000K	1787	ies file # 19353			
3500K	1680				
3000K	1537				
<b>P3112 HI</b>		35	35	.29	.13
4000K	2772	ies file # 17629			
3500K	2606				
3000K	2384				
<b>P3116 FX</b>		17	17	.17	.07
4000K	1231				
3500K	1158				
3000K	1059				
<b>P3116 LO</b>		27	27	.23	.10
4000K	1802				
3500K	1694				
3000K	1550				
<b>P3116 HI</b>		35	35	.29	.13
4000K	2796	ies file # 19274			
3500K	2628				
3000K	2405				

## Powder Coat Paint Finishes



**MW** matte white



**TW** textured white



**CP** champagne



**YO** yellow 1018



**RD** red 3020



**BZ** bronze



**BU** blue 5017



**SS** satin silver



**BR** brick red



**OR** orange 2011



**TG** textured gray



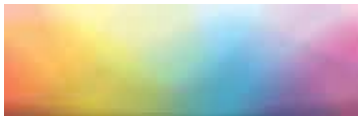
**MB** military blue



**MN** mint 6019

For accurate color verification, actual finish samples are available upon request.

## Premium Finishes\*



**RAL#**

For accurate color verification, actual finish samples are available upon request.

\*Available on select series. Consult product spec sheet for availability.

