

job name:
 type:

str8™ ceiling spec sheet

material

4" ribbed extruded aluminum outer housing in two lengths available in 2 anodized and 19 standard powder coat paint finishes listed below.

LED

COB in 2700K, 3000K, 3500K, or 4000K (80 cri standard) (90 cri optional) rated >36,000 hours L70 (6.8K) per LM-80 test data.

driver

integral,* constant current, class P, class 2 power unit, class A sound rating, universal input (120-277V) programmable driver, 1% minimum dimming level, PF >0.90. protections include short circuit, input/output isolation and surge protection (3KV). wired for 0-10v dimming from factory. *H3 lumen package in C7506 requires "deep" j-box.

finish

select from 2 anodized and 19 standard powder coat paint finishes listed below or specify RAL# for custom colors.

emergency

if required, recommend use of inverter (by other).

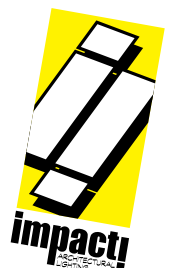


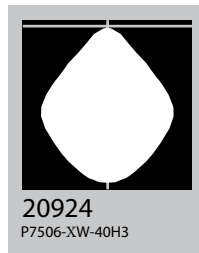
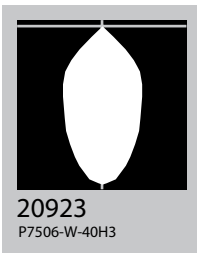
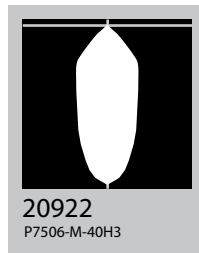
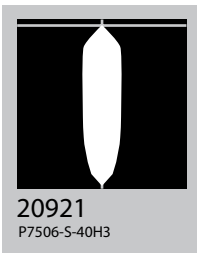
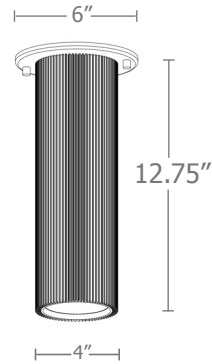
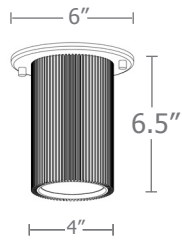
catalog number

| | | | | | |
|----------------------|----------------------|----------------------|----------------------|----------------------|----------------------|
| <input type="text"/> | <input type="text"/> | <input type="text"/> | <input type="text"/> | <input type="text"/> | <input type="text"/> |
|----------------------|----------------------|----------------------|----------------------|----------------------|----------------------|

| size | beam | CCT | lumens | anodized finishes | options |
|----------------------------------|--|--|--|---|--------------|
| C7506 4"dia X 6.5"ht | S 20° spot M 30° med W 50° wide | 27 2700K 30 3000K 35 3500K 40 4000K | L1 450 lm L2 800 lm L3 1000 lm H1 1500 lm H2 2200 lm H3* 3000 lm <small>*C7506 requires "deep" j-box</small> | AN silver anodized ANB anodized black | 90CRI |
| C7512 4"dia X 12.75"ht | XW 90° extra wide | | | painted finish BN brown BR brick red BS brass BU blue BZ bronze CP champagne GM gun metal GR green MB military blue MN mint MW matte white OR orange PL purple RD red SS satin silver TG textured gray TW textured white YO yellow | |

premium finish
 RAL specify RAL#

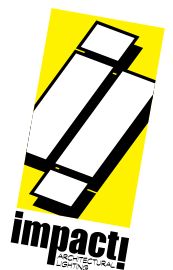




Cat No **Delivered* Lumens** **Watts 120V / 277V** **Amps 120V 277V**

| | | | | |
|-------------|-------------------|------------------|-------------------|---------------------|
| L1 | 450 | 4 | .03 | .01 |
| L2 | 800 | 7 | .06 | .03 |
| L3 | 1000 | 10 | .08 | .04 |
| H1 | 1500 | 14 | .12 | .05 |
| H2 | 2200 | 20 | .17 | .07 |
| H3** | 3000 | 29 | .24 | .10 |
| | S 20° spot | M 30° med | W 50° wide | XW 90° extra |
| ies file # | 20921 | 20922 | 20923 | 20924 |

*delivered lumens based on 4000K, 80+ cri (90cri multiplier .83)
 **H3 lumen package in C7506 requires "deep" j-box.



Powder Coat Paint Finishes



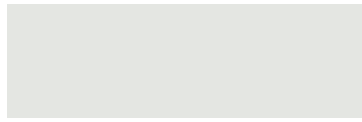
MW matte white



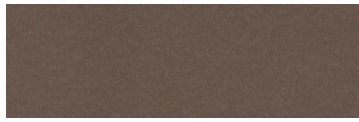
CP champagne



YO yellow 1018



TW textured white



BZ bronze



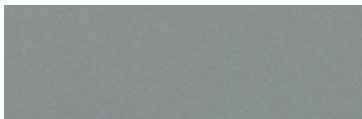
RD red 3020



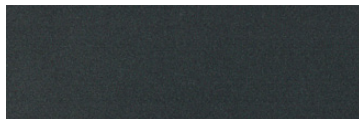
BS brass



BU blue 5017



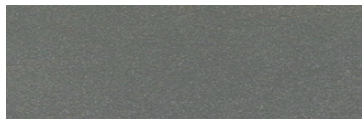
SS satin silver



GM gun metal



OR orange 2011



TG textured gray



BR brick red



MN mint 6019



BN brown 8023



GR green 6018



MB military blue



PL purple 4005

For accurate color verification, actual finish samples are available upon request.

Premium Finishes*



RAL#

*Available on select series. Consult product submittal for availability.

