

job name:
 type:

miniskrt™ ceiling spec sheet

material

housing

precision CNC spun .064" aluminum outer housing available in 21 standard powder coat paint finishes listed below.
 .060" aluminum liner powder coat painted high reflectance matte white.

diffuser

choose from .125" white acrylic or .064" spun aluminum powder coat painted high reflectance matte white.

LED

custom LED board in 3000K, 3500K, or 4000K (80+ cri standard) optional 90cri (see below). LEDs are rated >50,000 hours L70 (10K) at 85°C per LM-80 test data, and 70,000 hours projected life per IES TM-21.

driver

in canopy, constant current, class P class 2 power unit, class A sound rating, universal input (120-277V) programmable driver, 1% minimum dimming level, PF >0.90. protections include short circuit, input/output isolation and surge protection (3KV). wired for 0-10v dimming from factory.

finish

select from standard powder coat paint finishes or specify RAL# for custom colors.

emergency

if required, recommend use of inverter (by other).



catalog number

--	--	--	--	--

size

C6112
12.5"dia X 8"ht

C6116
16.25"dia X 9.5"ht

diffuser

A acrylic
M metal

LED

30LO 3000K
30HI 3000K

35LO 3500K
35HI 3500K

40LO 4000K
40HI 4000K

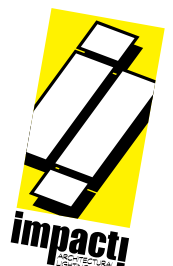
standard finishes

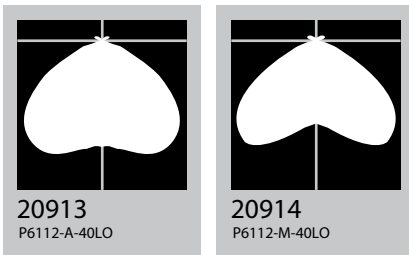
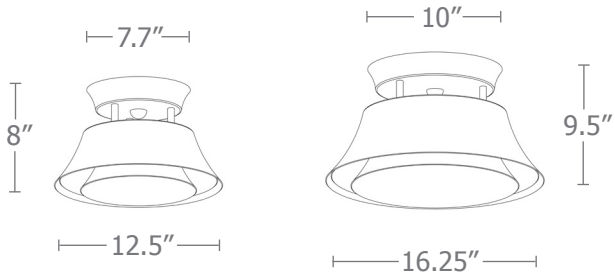
AP anodized paint
BN brown
BR brick red
BS brass
BU blue
BZ bronze
CP champagne
FB flat black
GM gun metal
GR green
MB military blue
MN mint
MW matte white
OR orange
PL purple
RD red
SB satin black
SS satin silver
TG textured gray
TW textured white
YO yellow

options
90CRI

premium finish

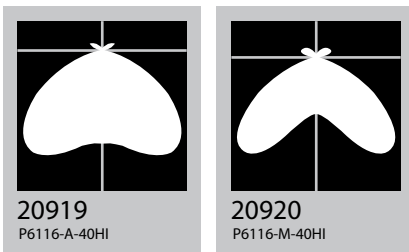
RAL specify RAL#





20913
P6112-A-40LO

20914
P6112-M-40LO



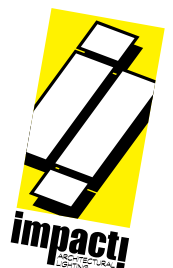
20919
P6116-A-40HI

20920
P6116-M-40HI

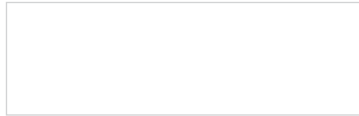
Cat No Delivered* Lumens **Watts** 120V / 277V **Amps** 120V 277V

Cat No	Delivered* Lumens	Watts 120V / 277V	Amps 120V	Amps 277V
C6112-A LO	1241	11	.08	.04
	ies file # 20913			
C6112-M LO	1001	11	.08	.04
	ies file # 20914			
C6112-A HI	2645	26	.19	.08
	ies file # 20915			
C6112-M HI	2147	26	.19	.08
	ies file # 20916			
C6116-A LO	2817	26	.19	.08
	ies file # 20917			
C6116-M LO	2120	26	.19	.08
	ies file # 20918			
C6116-A HI	3970	39	.28	.12
	ies file # 20919			
C6116-M HI	3008	39	.28	.12
	ies file # 20920			

*delivered lumens based on 4000K, 80+ cri (90cri multiplier .83)



Powder Coat Paint Finishes



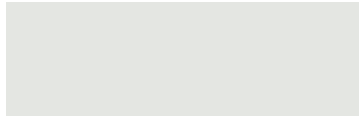
MW matte white



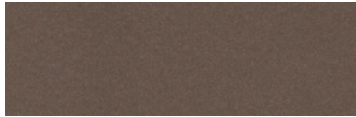
CP champagne



YO yellow 1018



TW textured white



BZ bronze



RD red 3020



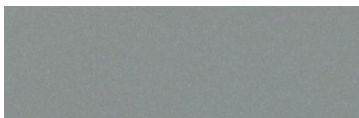
AP anodized paint



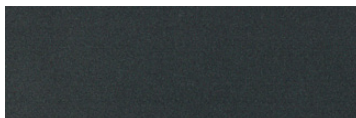
BS brass



BU blue 5017



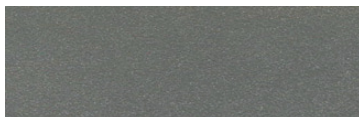
SS satin silver



GM gun metal



OR orange 2011



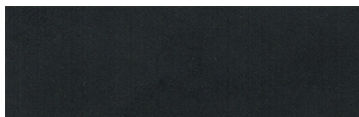
TG textured gray



BR brick red



MN mint 6019



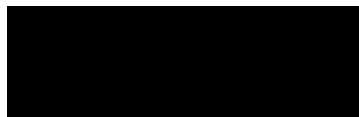
FB flat black



BN brown 8023



GR green 6018



SB satin black



MB military blue



PL purple 4005

For accurate color verification, actual finish samples are available upon request.

Premium Finishes*



RAL#

*Available on select series. Consult product submittal for availability.

