

job name:
 type:

na.row LED™ spec sheet

material

smooth extruded aluminum outer housing in three lengths available in 15 standard powder coat paint finishes listed below.

LED

COB in 2700K, 3000K, 3500K, or 4000K (80 cri standard) (90 cri optional) rated >36,000 hours L70 (6.8K) per LM-80 test data, and 71,000 hours projected life per IES TM-21.

driver

in canopy, constant current, class P class 2 power unit, class A sound rating, universal input (120-277V) programmable driver, 1% minimum dimming level, PF >0.90. protections include short circuit, input/output isolation and surge protection (3KV). wired for 0-10v dimming from factory.

mounting

extruded aluminum canopy painted to match fixture. ultrathin vertical stainless steel cable and field adjustable gripper that allow for exact AFF mounting heights. cloth-covered power cord color options listed below. cord requires special stripping tool (link).

power over cable (optional)

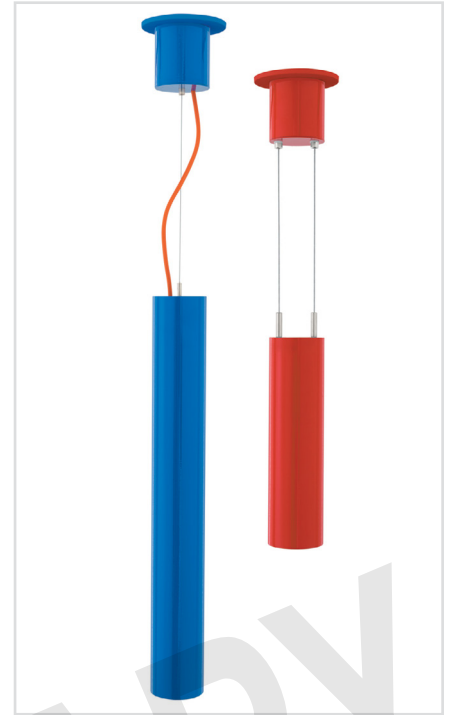
Class 2 LED powered suspension system that suspends and powers the fixture with thin stainless steel copper-core conductive cables, providing a clean look without the need for a separate power cord. powered suspension requires cable cutter (link) specifically designed to cut stainless steel aircraft cable from 1/32" to 1/8".

finish

select from 15 standard powder coat paint finishes listed below or specify RAL# for custom colors.

emergency

if required, recommend use of inverter (by other).



catalog number

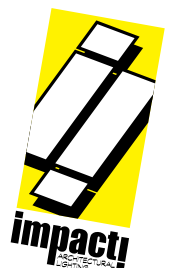
| size | beam | CCT | lumens* | standard finishes | power cord | options |
|---------------------------------|--|------------------------------------|---|---|---|--|
| P7612 3.5"dia X 12"ht | S 20° spot M 30° med W 50° wide | 27 2700K 30 3000K | L1 450 lm L2 800 lm | AP anodized paint BR brick red BU blue BZ bronze CP champagne MB military blue MN mint MW matte white OR orange RD red SB satin black SS satin silver TG textured gray TW textured white YO yellow | BUPC blue cloth cord ORPC orange cloth cord PLPC purple cloth cord RDPC red cloth cord WGPC white & gray dot cloth cord POC power over cable | 3FT 36" cables 6FT 72" cables 90CRI |
| P7618 3.5"dia X 18"ht | | 35 3500K 40 4000K | L3 1000 lm H4 1500 lm | | | |
| P7624 3.5"dia X 24"ht | | | H5 2200 lm H6 3000 lm <small>*preliminary</small> | | | |

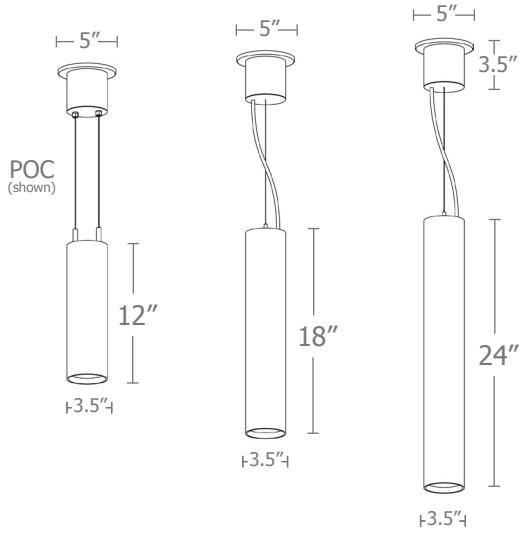
Premium Finish

RAL specify RAL#



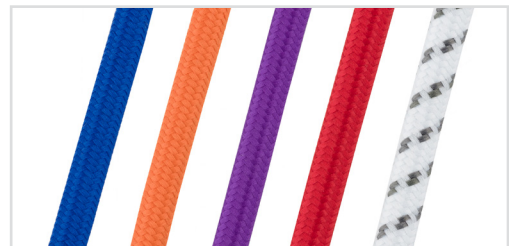
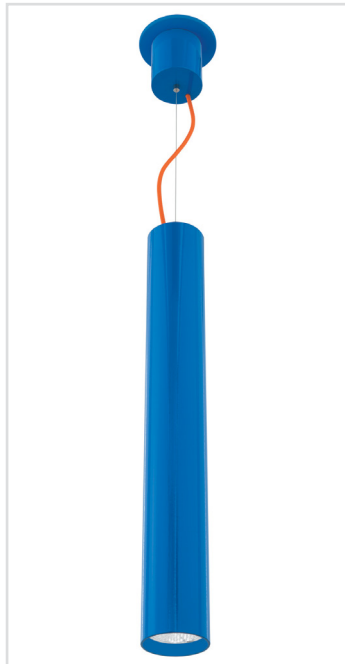
DRY / DAMP
pending



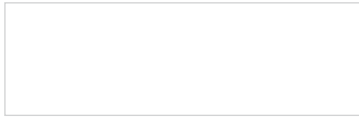


| Cat No | lumens* | watts |
|--------|---------|-------|
| L1 | 450 | 4 |
| L2 | 800 | 7 |
| L3 | 1000 | 10 |
| H4 | 1500 | 14 |
| H5 | 2200 | 20 |
| H6 | 3000 | 29 |

*Preliminary delivered lumens



Powder Coat Paint Finishes



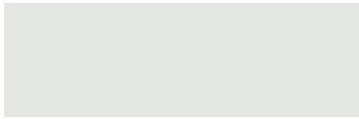
MW matte white



SB satin black



YO yellow 1018



TW textured white



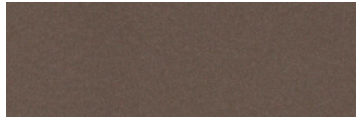
CP champagne



RD red 3020



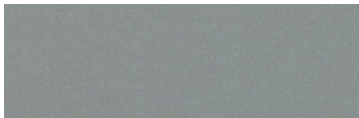
AP anodized paint



BZ bronze



BU blue 5017



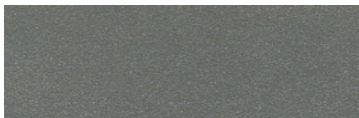
SS satin silver



BR brick red



OR orange 2011



TG textured gray



MB military blue



MN mint 6019

For accurate color verification, actual finish samples are available upon request.

Premium Finishes*



RAL#

*Available on select series. Consult product submittal for availability.

